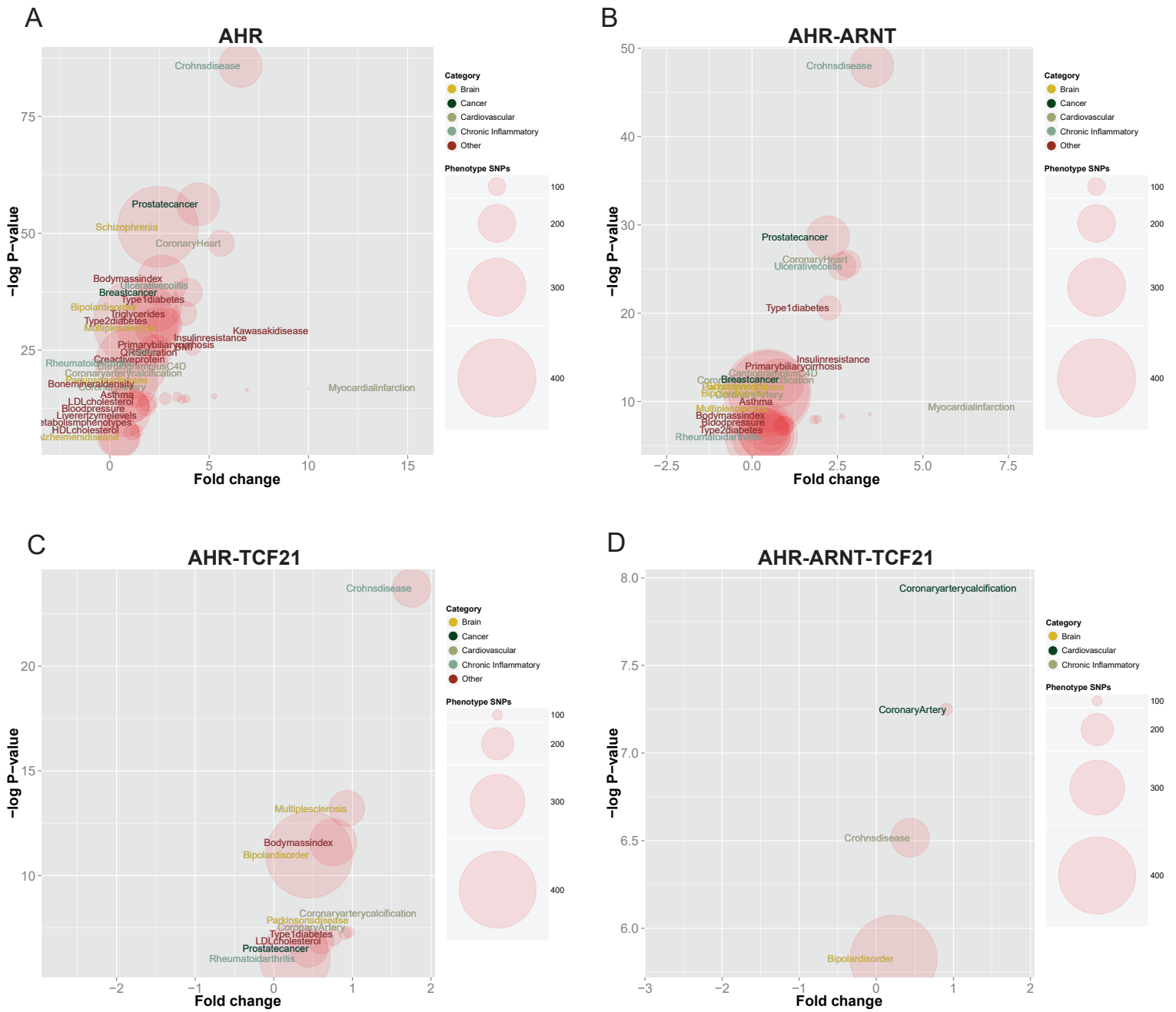


Fig. S8



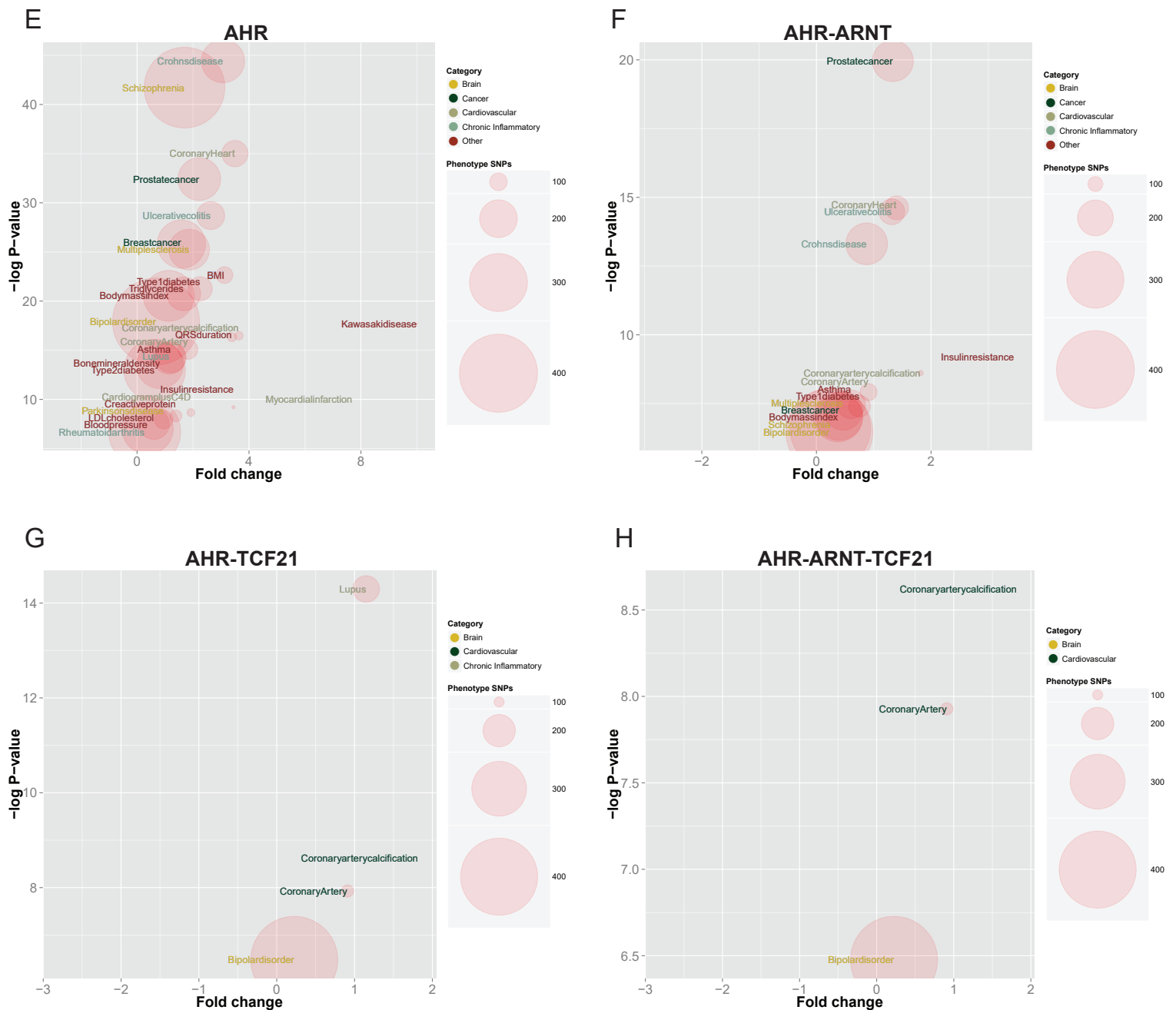


Figure S8.

AHR-ARNT, AHR-TCF21 and AHR-ARNT-TCF21 overlapping ChIP-Seq sites enrich in coronary and inflammatory GWAS lead SNPs in window of +/-10kb and +/-5kb

Overlap of (A) AHR ChIP-Seq binding sites, (B) AHR and ARNT ChIP-Seq binding sites, (C) AHR-TCF21 ChIP-Seq binding sites and (D) AHR-ARNT-TCF21 ChIP-Seq sites with GWAS SNPs in a window of +/-10000bp tested for significance using binomial test. Overlap of (E) AHR ChIP-Seq binding sites, (F) AHR and ARNT ChIP-Seq binding sites, (G) AHR-TCF21 ChIP-Seq binding sites and (H) AHR-ARNT-TCF21 ChIP-Seq sites with GWAS SNPs in a window of +/-5000bp tested for significance using binomial test.