

***Kif4A mediate the accumulation and reeducation of THP-1 derived  
macrophages via regulation of CCL2-CCR2 expression in crosstalking  
with OSCC***

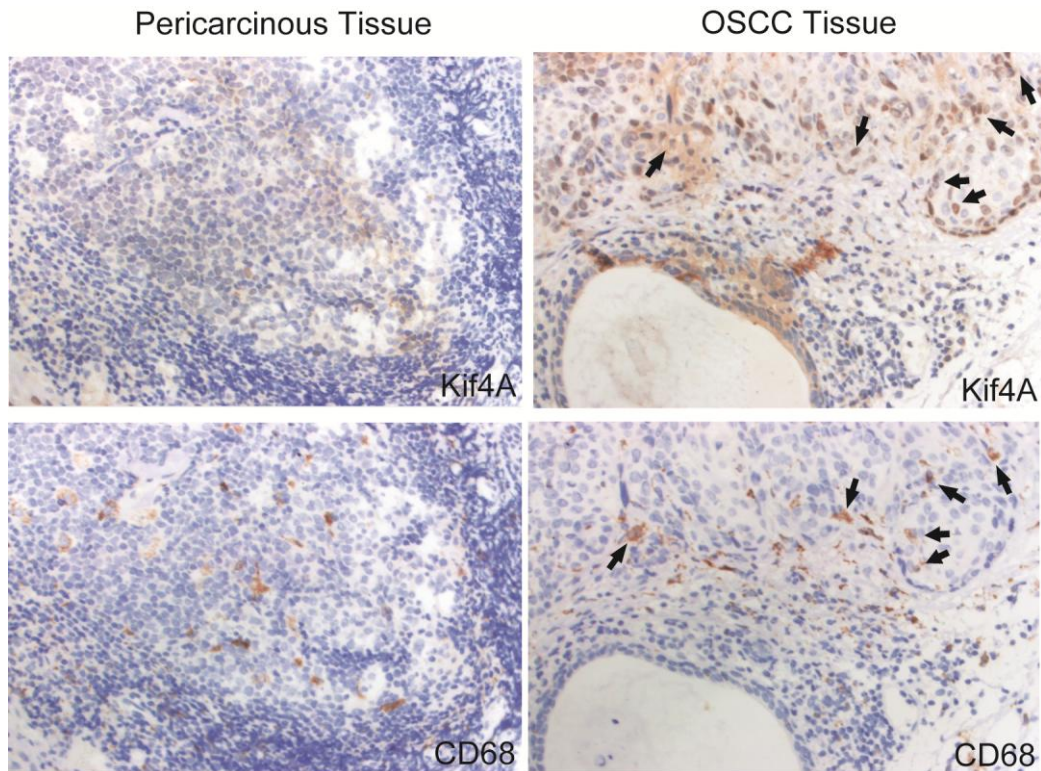
Yun Zhang<sup>1,3</sup>, Shaohua Liu<sup>1</sup>, Daiwei Qu<sup>2</sup>, Ketao Wang<sup>1</sup>, Lin Zhang<sup>3</sup>, Xuanxuan Jing<sup>3</sup>,  
Chen Li<sup>3</sup>, Fengcai Wei<sup>1</sup>, Xun Qu<sup>3,\*</sup>

<sup>1</sup> Institute of Stomatology, Qilu Hospital of Shandong University, Jinan, 250012,  
Shandong, P.R. China

<sup>2</sup> Department of Gynaecology and Obstetrics, Qilu Hospital of Shandong University,  
Jinan, 250012, Shandong, P.R. China

<sup>3</sup> Institute of Basic Medical Sciences, Qilu Hospital of Shandong University, Jinan,  
250012, Shandong, P.R. China

\*Correspondence and requests for materials should be addressed to X.Q. (email:  
quxun@sdu.edu.cn)



**Supplementary Figure S1. Immunohistochemical analysis of CD68 and Kif4A expression in the OSCC tissue.** 4- $\mu$ m-thick sequential histological tumor sections were obtained from a representative formalin-fixed, paraffin-embedded OSCC tumor block and used for IHC analysis. After staining experiments with anti-CD68 mAb and anti-Kif4A mAb, double-positive cells (CD68<sup>+</sup> macrophages which express Kif4A) were shown in black arrowheads.