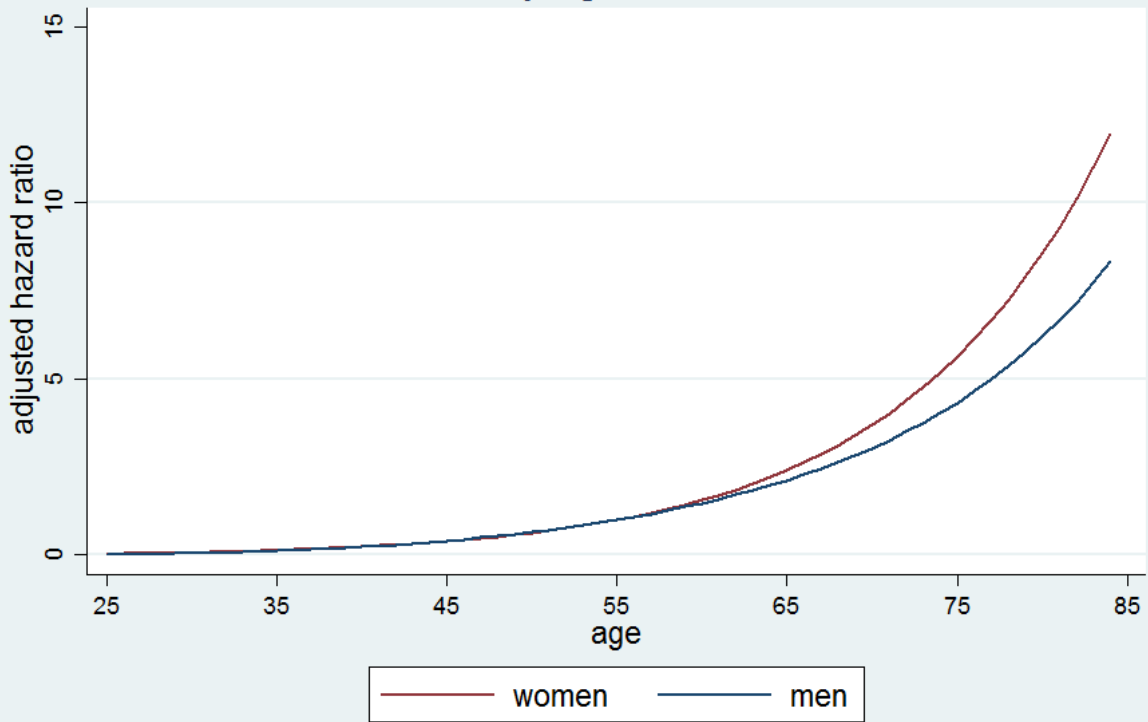
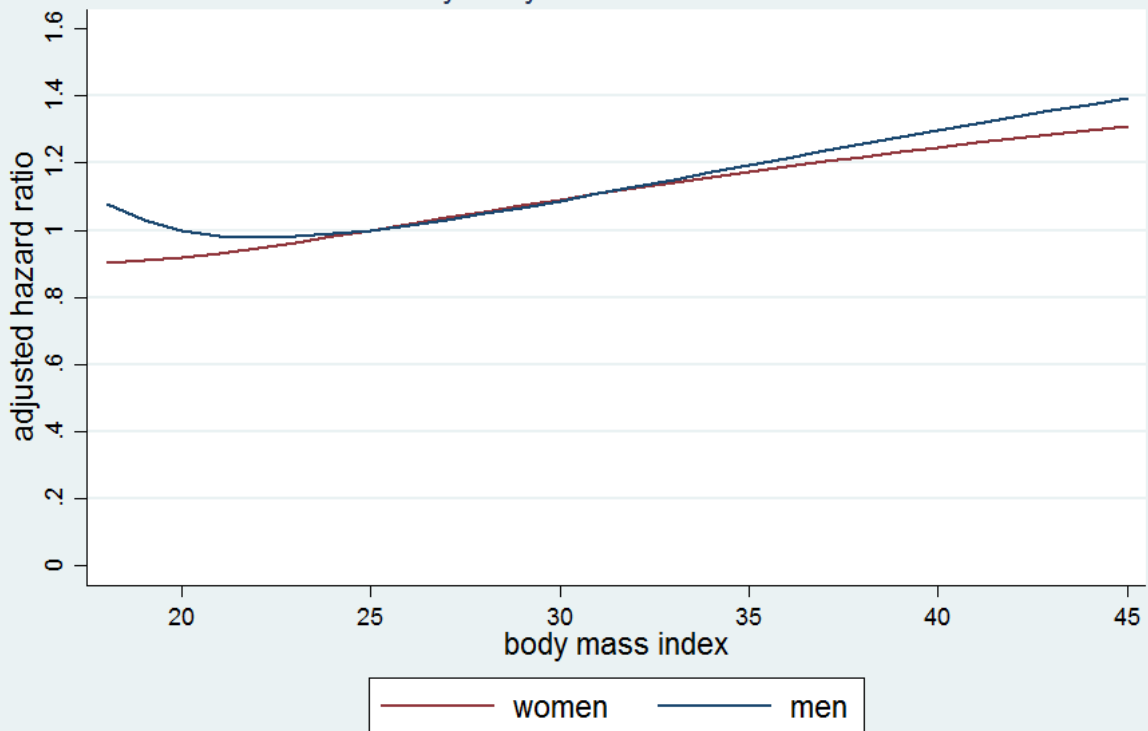


Hazard ratios by age in men and women



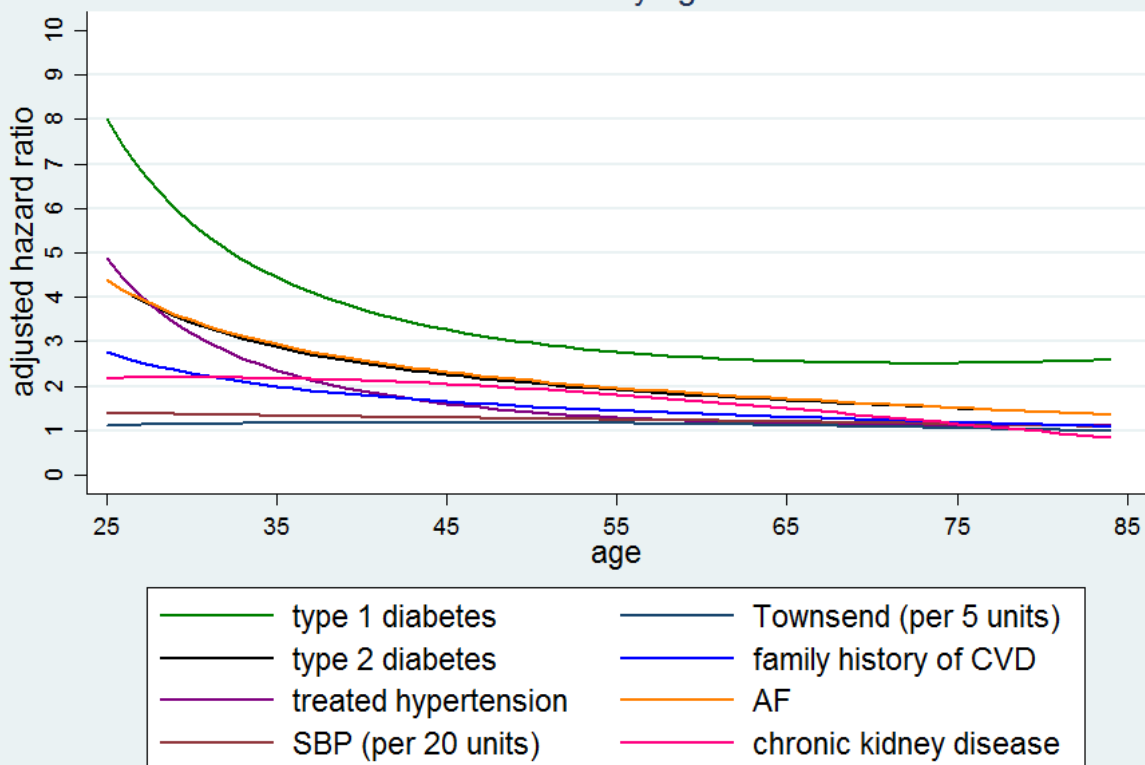
hazard ratios compared with age=55

Hazard ratios by body mass index in men and women

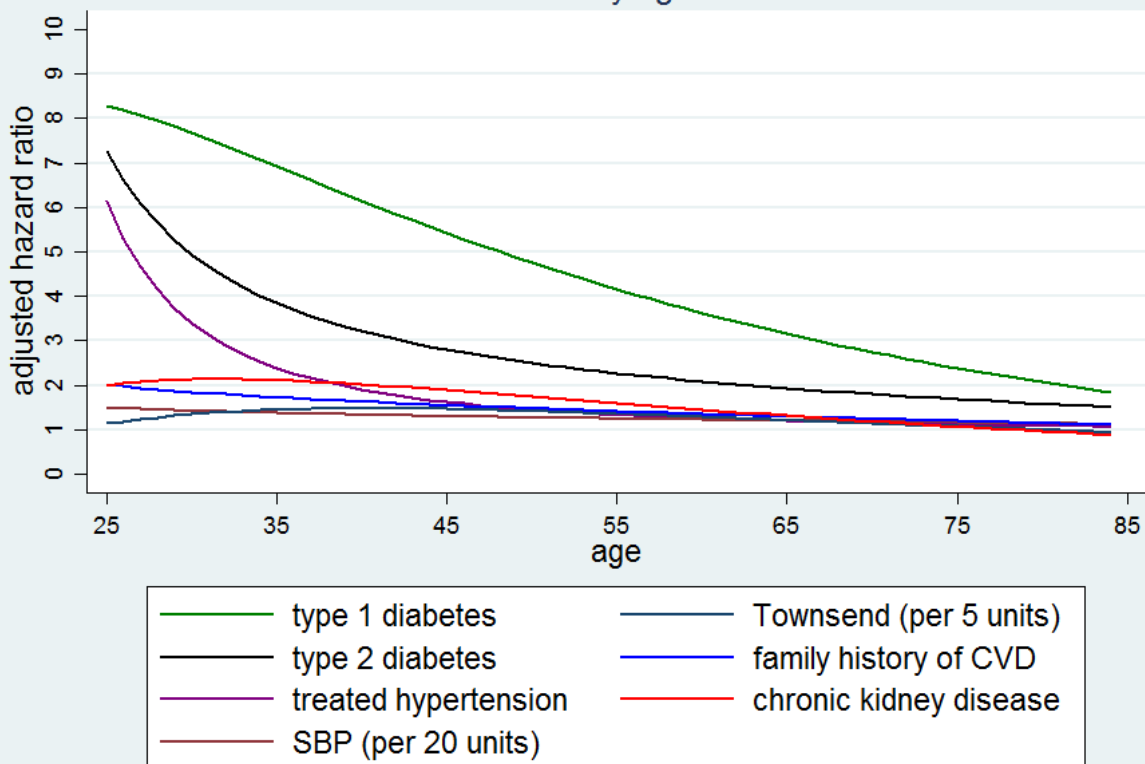


hazard ratios compared with bmi=25

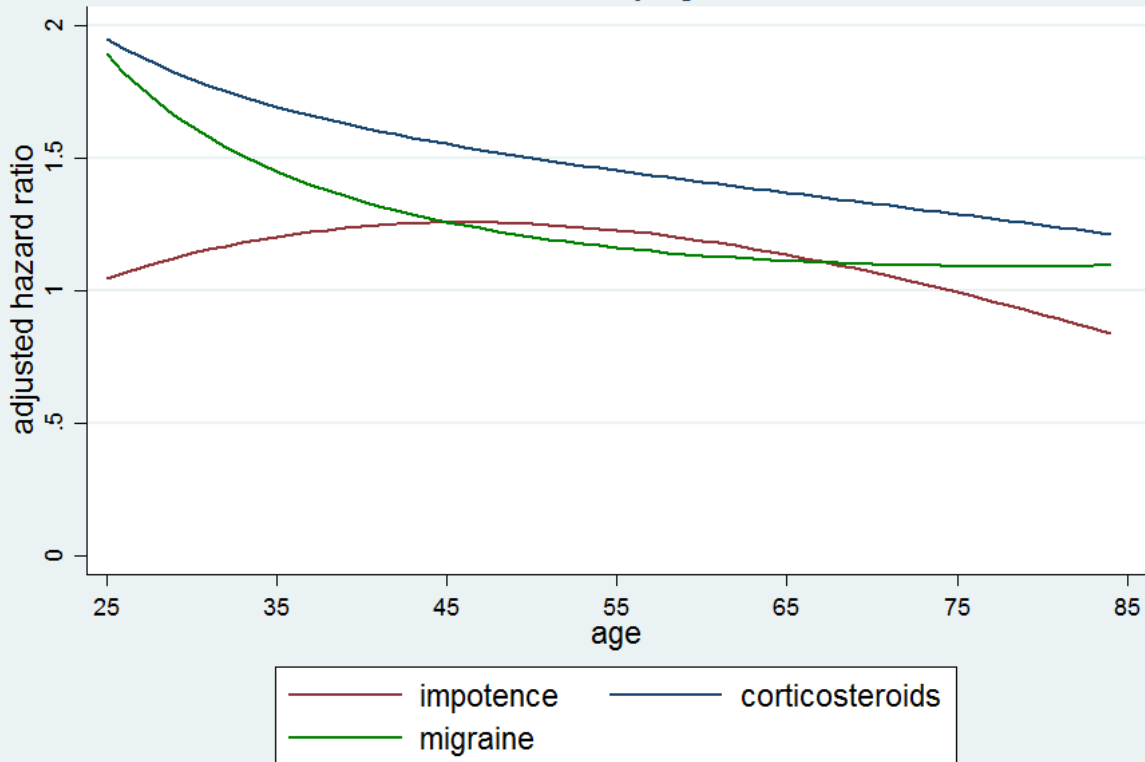
Hazard ratios by age in men



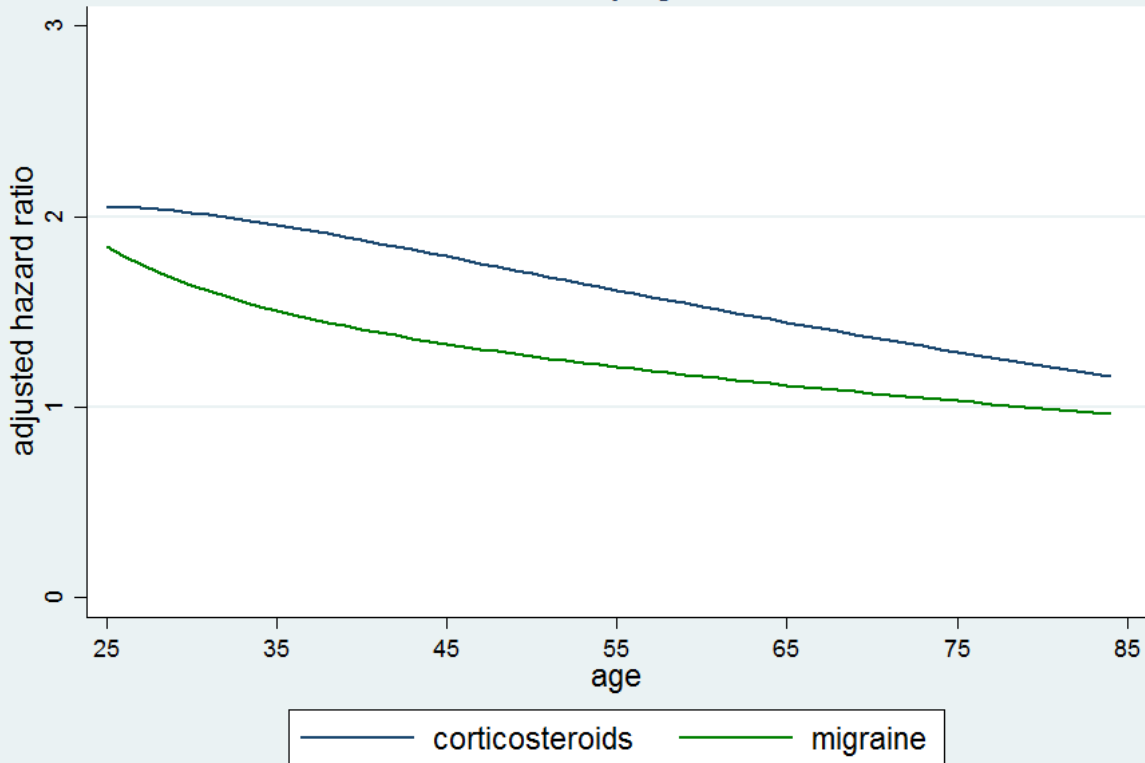
Hazard ratios by age in women



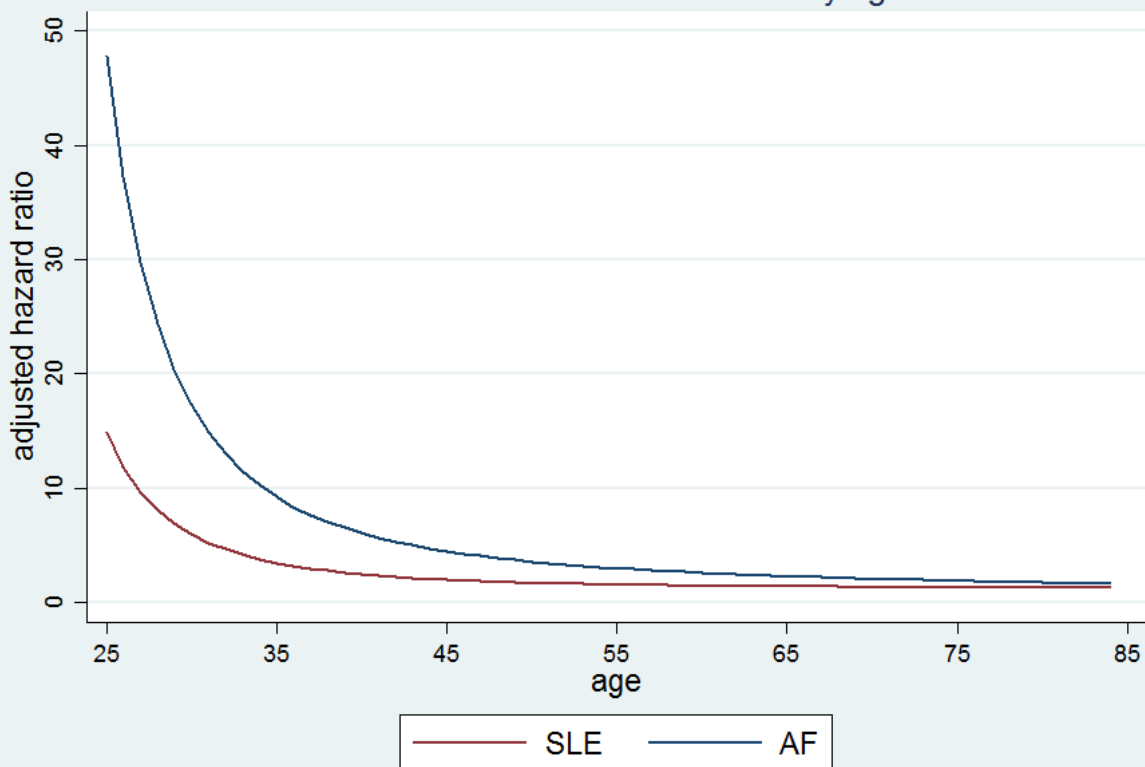
Hazard ratios by age in men



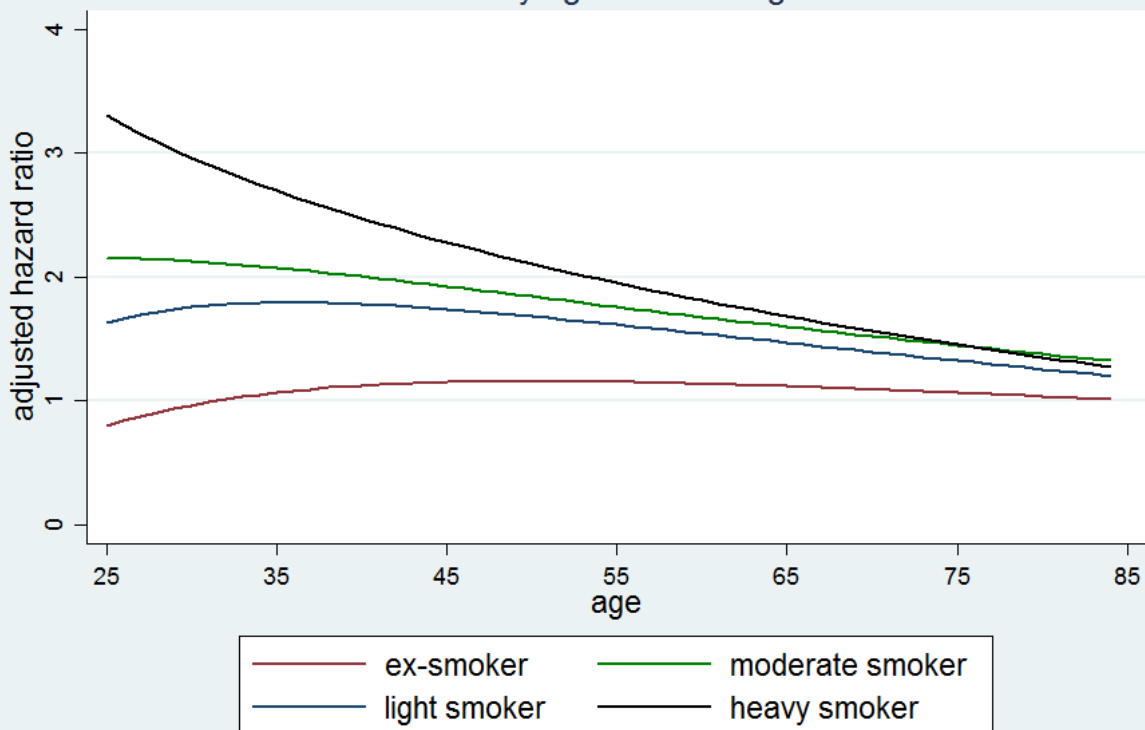
Hazard ratios by age in women



Hazard ratios for SLE and atrial fibrillation by age in women

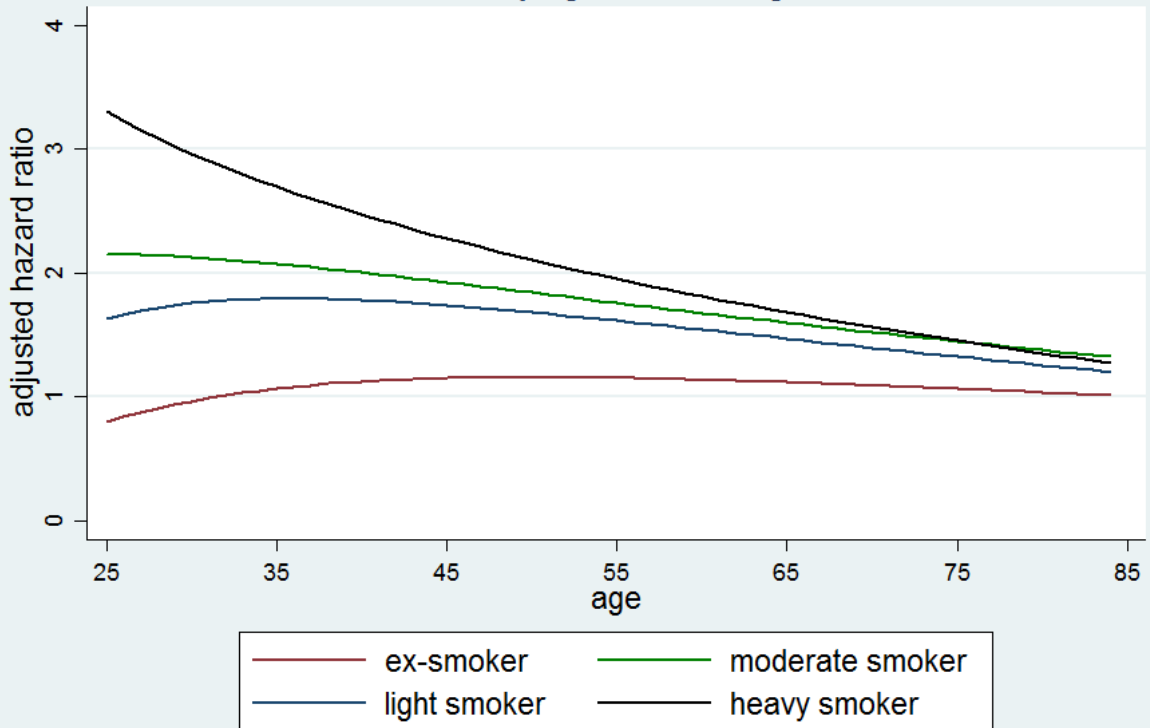


Hazard ratios by age for smoking in women



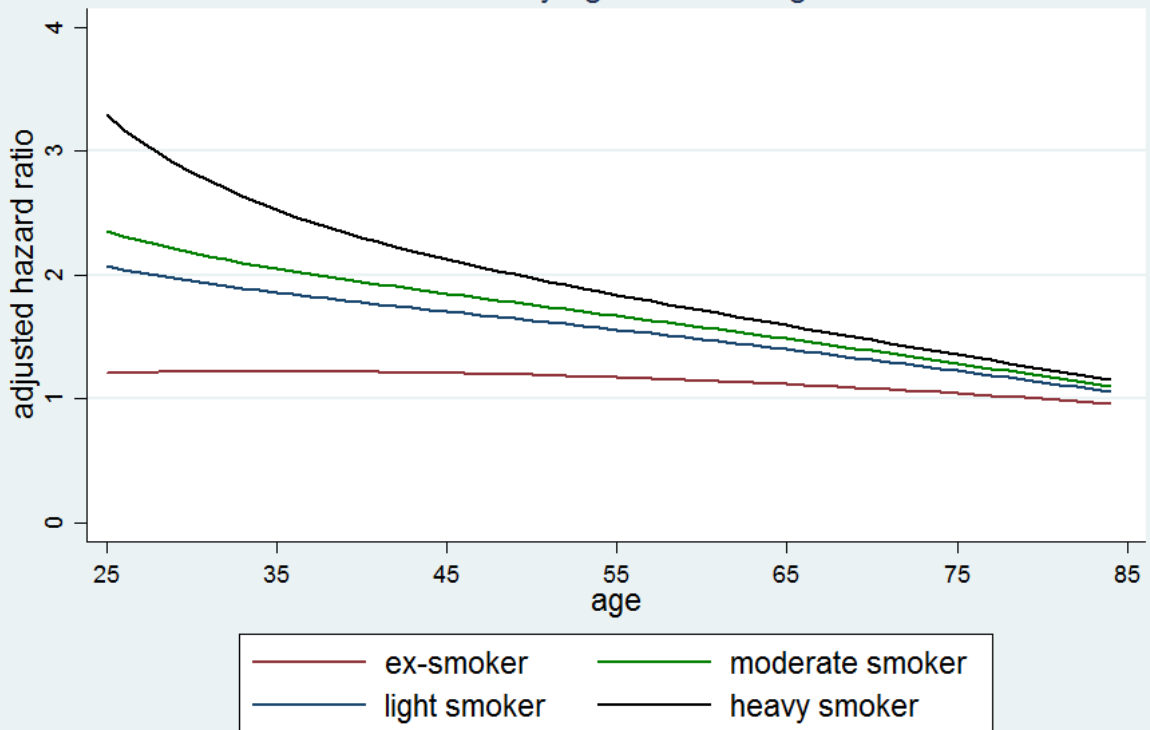
hazard ratios compared to non-smokers

Hazard ratios by age for smoking in women



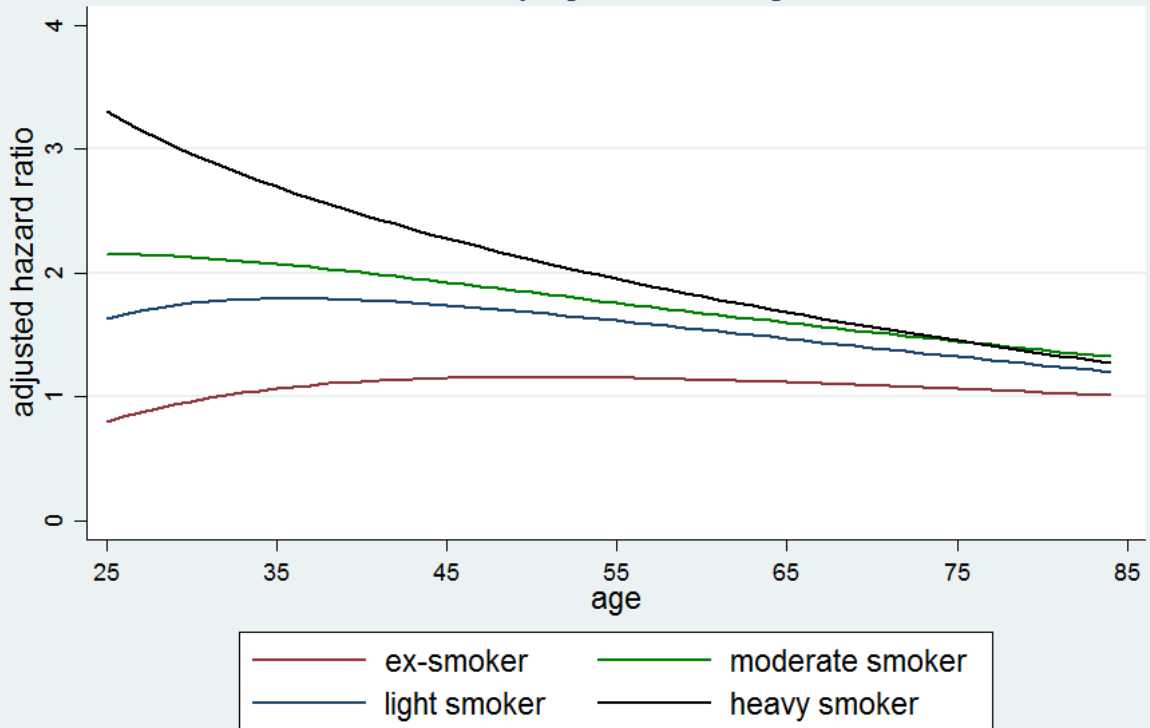
hazard ratios compared to non-smokers

Hazard ratios by age for smoking in men



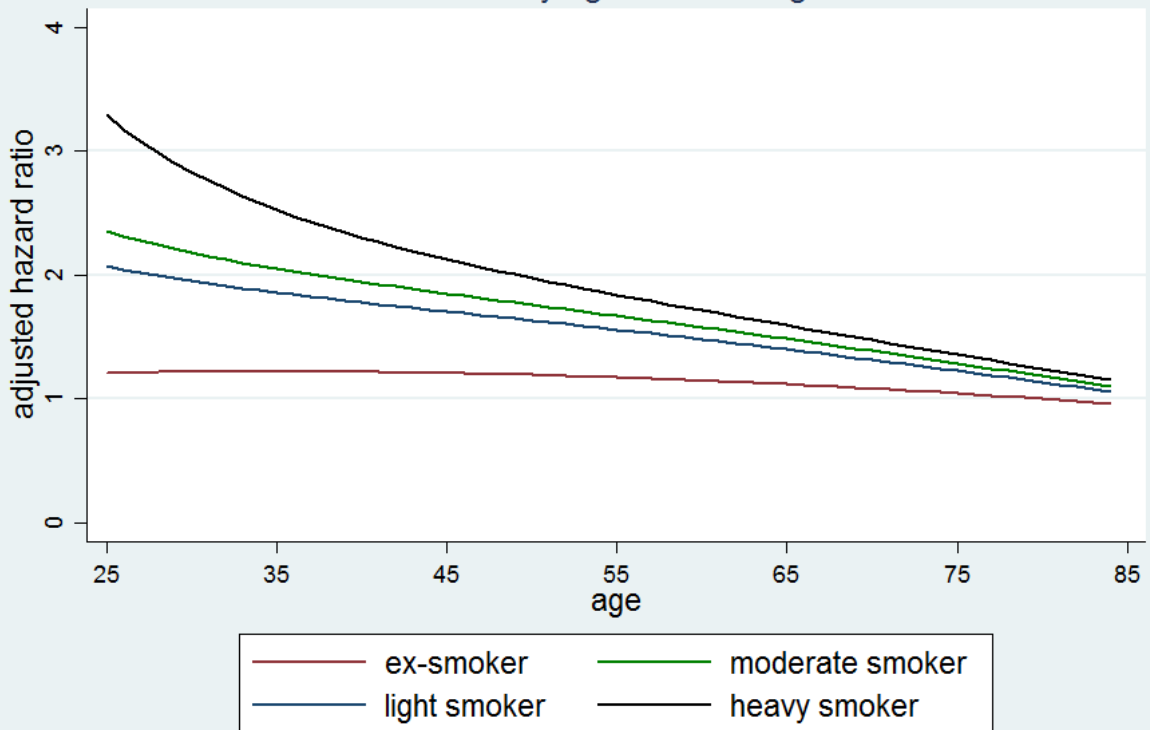
hazard ratios compared to non-smokers

Hazard ratios by age for smoking in women



hazard ratios compared to non-smokers

Hazard ratios by age for smoking in men



hazard ratios compared to non-smokers

