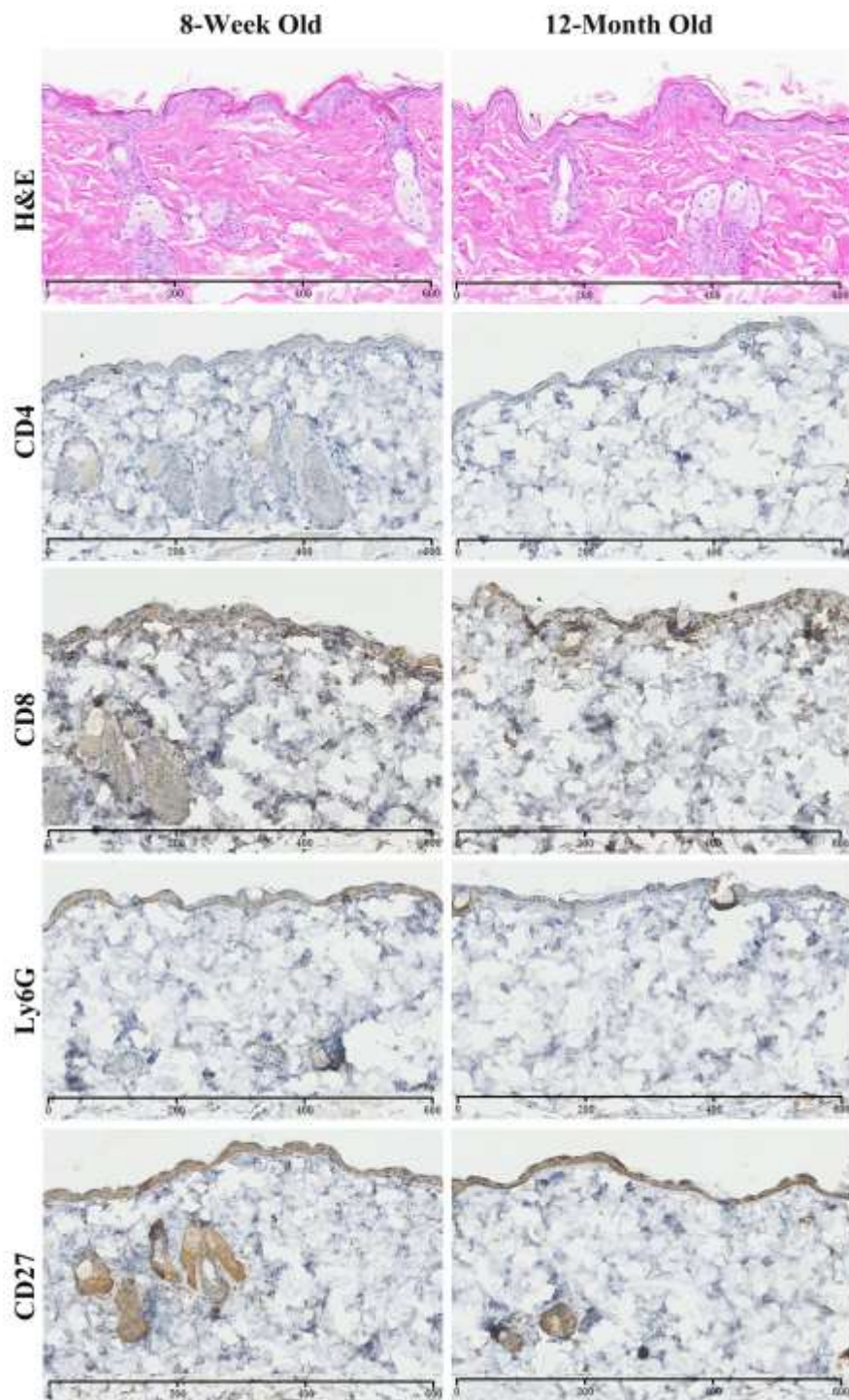


Table S1. The primers used for QRT-PCR analyses.

Gene	Forward primer (5'–3')	Reverse primer (5'–3')
GAPDH	ACCTGCCAAGTATGATGACATCA	GGTCCTCAGTGTAGCCCAAGAT
IL-1 α	TCTGCCATTGACCATCTC	ATCTTCCCGTTGCTTGAC
IL-1 β	GCAACTGTTCTGAACTCAACT	ATCTTTTGGGGTCCGTCAACT
IL-4	GGTCTCAACCCCAAGTAGT	GCCGATGATCTCTCTCAAGTGAT
IL-5	GGGCTTCCTGCTCCTATCTA	CAGTCATGGCACAGTCTGAT
IL-6	TAGTCCTTCTACCCCAATTTCC	TTGGTCCTTAGCCACTCCTTC
IL-10	CAGGGATCTTAGCTAACGAAA	GCTCAGTGAATAAATAGAATGGGAAC
IL-12 β	AGACATGGAGTCATAGGCTCTG	CCATTTTCTTCTTGTGGAGCA
IL-17A	TCATCTGTGTCTCTGATGCTGTTG	TCGCTGCCTTCACTGT
IL-17F	TCGCCATTGAGCAAGAAATCC	CACAGGTGCAGCCAACTTTTA
IL-18	GACTCTTGCCTCAACTTCAAGG	CAGGCTGTCTTTTGTCAACGA
IL-19	AAATCTCTGGAGCGATGTCAG	GGCTAAAAGTATGTTTCAGTTCTCC
IL-22	GCTCAGCTCCTGTCACATCA	AGCTTCTTCTCGCTCAGACG
IL-23	AGCAACTTCACACCTCCCTAC	ACTGCTGACTAGAACTCAGGC
IL-24	GCCCAGTAAGGACAATTCCA	ATTTCTGCATCCAGGTCAGG
IFN γ	GAACTGGCAAAAGGATGGTGA	TGTGGGTTGTTGACCTCAAAC
TGF β	CCGCAACAACGCCATCTATG	CTCTGCACGGACAGCAAT
TGF β R1	CATTCACCACCGTGTGCCAAATGA	ACCTGATCCAGACCCTGATGTTGT
TNF α	CAGGCGGTGCCTATGTCTC	TTGGTGGTTTGTGAGTGTGAG
CXCL-1	ACCCAAACCGAAGTCATAGC	TGGGGACACCTTTTAGCATC
CXCL-2	AGTTTGCCTTGACCCTGAAG	CTTTGGTTCTTCCGTTGAGG
CXCL-9	GAACGGAGATCAAACCTGCCT	TGTAGTCTTCTTGAACGACGA
Amyloid A	AGTCTGGGCTGCTGAGAAAA	GGCAGTCCAGGAGGTCTGTA

Table S2. List of Antibodies

Cell Types	Markers	Primary Antibodies		Secondary Antibodies	
		Sources	Concentrations	Sources	Concentrations
Helper T cells	CD4	Abcam(ab25475)(Rat)	1:100	CWBio(CW0169S)(Goat)	1:200
Cytotoxic T cells	CD8	Abcam(ab25478)(Rat)	1:100	CWBio(CW0169S)(Goat)	1:200
Neutrophils	Ly6G	Biolengend(108401)(Rat)	1:300	CWBio(CW0169S)(Goat)	1:200
Langerhans cells	CD207	Dendritics(DDX0362P-100)(Rat)	1:150	CWBio(CW0169S)(Goat)	1:200



Supplemental Figure 1. Comparison of Cutaneous Infiltration of Inflammatory Cells in Young vs. Aged Mice. Skin biopsies were taken from 8-week and 12-month old C57/BL6J mice. Paraffin sections were stained with respective antibodies as detailed in Table S2. Magnification bars=600 μm.