

## Mild reproductive impact of a Y chromosome deletion on a C57BL/6J substrain

Megan M. MacBride, Adam Navis, Amar Dasari, and Ana V. Perez\*  
Taconic Biosciences, One Hudson City Centre, Hudson, NY 12534, USA

\*To whom correspondence should be addressed (email: ana.perez@taconic.com, phone: +1 518-697-3984 fax: +1 518-697-3910).

Mammalian Genome

Table S1. List of Primers used on Testes Expression Analysis

Gene Name	Chrom #	Forward	Reverse	Reverse 2
<i>Acrv1</i>	9	TGAGTACACCACTTCC AAGCA	AAGCACATGTGTGGCA ATTT	
<i>Asty</i>	Y	GRGGAGTAGAACTCA TCATC	CAGGAGATGACTAACA TAGCA	
<i>β-actin</i>	5	GGCACCACACCTTCTA CAATG	GTGGTGGTGAAGCTGT AGCC	
<i>Protamine 1</i>	16	ACAAAATTCCACCTGC TCACA	GTTTTTCATCGGaCGGT GGC	
<i>Rbm31y</i> Genomic	Y	TTTGGGATCGGCCAA TATGC	ACTTCCTCTCTTCCAA CTGTC	
<i>Rbm31y</i> Expression	Y	AACCCAAATGCCTTC GAGTC	ACTTCCTCTCTTCCAA CTGTC	
<i>Sly</i> Global ( <i>Sly1</i> + <i>Sly2</i> )	Y	CATTTATAAGACGCTT CACATAAAG	TCCTCCATGATGGCTCT TTC	ATTCTCCATGATGGCTCTTTC
<i>Sly</i> Long ( <i>Sly1</i> only)	Y	GAAGACATGGGACAT GAAGTAGG	TCCTCCATGATGGCTCT TTC	ATTCTCCATGATGGCTCTTTC
<i>SSty1</i>	Y	AGAAGGATCCAGCTC TCTATGCT	CCAGTTACCAATCAACA CATCAC	
<i>SSty2</i>	Y	CAGGTGCCATTCTTAC AGGACTAT	ACCCAGGAACCTATTA AGAAGTCAT	
<i>Zfy2</i>	Y	CTTAATTCCAGACATT TTAACTTCCA	ATCACTTGTTCAAATG TCCTACATT	

**Note:** The primers 'Sly global' amplify the two *Sly* transcripts (*Sly1* and *Sly2*), while the primers 'Sly long' amplify only *Sly1*.

Table S2. List of STR Markers and their Y Chromosome positions

STR Marker #	Position Mb	Present in B6NTac	Present in B6JBom
DYS101	0.19	+	+
DYS101I	0.2	+	+
DYS102	0.33	+	+
DYS201	0.94	+	+
DYS202	1.73	+	+
DYS204	2.57	+	+
DYS301	3.99	+	+
DYS601	12.87	+	-
DYS704	17.38	+	-
DYS601I	17.58	+	-
DYS1001I	18.38	+	-
DYS1501I	35.69	+	-
DYS1501II	36	+	-
DYS1001	41.07	+	-
DYS465I	46.6	+	-
DYS465	46.7	+	+
DYS1501	81.16	+	+

Table S3. Antibodies used for multiparametric flow cytometry analysis of spleen and bone marrow cells

Tissue	Antigen combinations	Target cell populations
<u>Bone Marrow:</u> CD11b <sup>FITC</sup> , CD19 <sup>PE</sup> , Ly6G <sup>PeCy7</sup> F4/80 <sup>PerCP</sup> , Ly6C <sup>APC</sup> , CD45 <sup>APC/Cy7</sup> DAPI	CD11b, Ly6G, Ly6C, F4/80	<ul style="list-style-type: none"> <li>Total CD11b<sup>pos</sup>CD19<sup>neg</sup>CD45<sup>pos</sup> myeloid cell,</li> <li>CD11bLy6G<sup>pos</sup> – granulocytic population,</li> <li>CD11bLy6C<sup>pos</sup>Ly6G<sup>neg</sup> – monocytic lineage,</li> <li>CD11bF4/80<sup>pos</sup>/Ly6C<sup>neg</sup> – BM macrophages &amp; APC</li> </ul>
	CD19, CD11b, CD45	<ul style="list-style-type: none"> <li>Total CD19<sup>pos</sup> B lymphocytes,</li> <li>SSC<sup>int</sup>/CD19<sup>pos</sup>/CD45<sup>pos</sup> – plasma B cells,</li> <li>SSC<sup>int</sup>/CD19<sup>pos</sup>/CD45<sup>neg</sup> – abnormal B cells</li> </ul>
	CD45 <sup>pos</sup> Lin <sup>neg</sup>	<ul style="list-style-type: none"> <li>Total hematopoietic stem/progenitor cell (HPC)</li> </ul>
<u>Spleen:</u> CD11b <sup>FITC</sup> ,	CD19, CD11b, CD45	<ul style="list-style-type: none"> <li>Total CD19<sup>pos</sup> B lymphocytes</li> </ul>
	CD3, CD8, CD4	<ul style="list-style-type: none"> <li>Total CD3<sup>pos</sup> T lymphocytes;</li> <li>CD3<sup>pos</sup>CD4<sup>pos</sup> – Th cells</li> <li>CD3<sup>pos</sup>CD8<sup>pos</sup> – cytotoxic T cells</li> </ul>

CD19 <sup>PE</sup> , CD8 <sup>PeCy7</sup>  CD11c <sup>PerCP</sup> , CD4 <sup>APC</sup> , CD3 <sup>APC/Cy7</sup>  DAPI	CD11b, CD11c, CD3, CD19	<ul style="list-style-type: none"> <li>• CD11c<sup>pos</sup>CD11b<sup>int</sup>[CD3/CD19]<sup>neg</sup> – migratory dendritic cells;</li> <li>• CD11c<sup>pos</sup>CD11b<sup>neg</sup>[CD3neg/CD19]<sup>neg</sup> – resident dendritic cells</li> </ul>
--	----------------------------	---

Table S4. NCBI Database Extract of Y chromosome genes between 6.12 Mb and 47.31 Mb

Mouse Gene	Coding Region Position	Description	UCSC link
Rbm31y	chrY:17,400,788-17,402,485	RNA binding motif 31, Y-linked (Rbm31y), mRNA	<a href="http://genome.ucsc.edu/cgi-bin/hgGene?hgg_gene=uc029xsd.1&amp;hgg_prot=Q9D3U4&amp;hgg_chrom=chrY&amp;hgg_start=17400760&amp;hgg_end=17402718&amp;hgg_type=knownGene&amp;db=mm10&amp;hgsid=500967801_Vakd6YZAzH49xqeBY7x8QEfmp51u">http://genome.ucsc.edu/cgi-bin/hgGene?hgg_gene=uc029xsd.1&amp;hgg_prot=Q9D3U4&amp;hgg_chrom=chrY&amp;hgg_start=17400760&amp;hgg_end=17402718&amp;hgg_type=knownGene&amp;db=mm10&amp;hgsid=500967801_Vakd6YZAzH49xqeBY7x8QEfmp51u</a>
Rbm31y	chrY:12,688,137-12,689,834	RNA binding motif 31, Y-linked (Rbm31y), mRNA	<a href="http://genome.ucsc.edu/cgi-bin/hgGene?hgg_gene=uc012hsj.1&amp;hgg_prot=Q9D3U4&amp;hgg_chrom=chrY&amp;hgg_start=12688109&amp;hgg_end=12690067&amp;hgg_type=knownGene&amp;db=mm10&amp;hgsid=500967801_Vakd6YZAzH49xqeBY7x8QEfmp51u">http://genome.ucsc.edu/cgi-bin/hgGene?hgg_gene=uc012hsj.1&amp;hgg_prot=Q9D3U4&amp;hgg_chrom=chrY&amp;hgg_start=12688109&amp;hgg_end=12690067&amp;hgg_type=knownGene&amp;db=mm10&amp;hgsid=500967801_Vakd6YZAzH49xqeBY7x8QEfmp51u</a>
Sly	chrY:38,775,333-38,799,352	SAM and SH3 domain-containing protein 3	<a href="http://genome.ucsc.edu/cgi-bin/hgGene?hgg_gene=uc029xxu.1&amp;hgg_prot=A0A087WSR0&amp;hgg_chrom=chrY&amp;hgg_start=38774735&amp;hgg_end=38800793&amp;hgg_type=knownGene&amp;db=mm10&amp;hgsid=500967801_Vakd6YZAzH49xqeBY7x8QEfmp51u">http://genome.ucsc.edu/cgi-bin/hgGene?hgg_gene=uc029xxu.1&amp;hgg_prot=A0A087WSR0&amp;hgg_chrom=chrY&amp;hgg_start=38774735&amp;hgg_end=38800793&amp;hgg_type=knownGene&amp;db=mm10&amp;hgsid=500967801_Vakd6YZAzH49xqeBY7x8QEfmp51u</a>
Ssty1	chrY:18,090,734-18,091,432	spermiogenesis specific transcript on the Y 1 (Ssty1), mRNA	<a href="http://genome.ucsc.edu/cgi-bin/hgGene?hgg_gene=uc009vif.2&amp;hgg_prot=J3QPX2&amp;hgg_chrom=chrY&amp;hgg_start=18089166&amp;hgg_end=21097715&amp;hgg_type=knownGene&amp;db=mm10&amp;hgsid=500967801_Vakd6YZAzH49xqeBY7x8QEfmp51u">http://genome.ucsc.edu/cgi-bin/hgGene?hgg_gene=uc009vif.2&amp;hgg_prot=J3QPX2&amp;hgg_chrom=chrY&amp;hgg_start=18089166&amp;hgg_end=21097715&amp;hgg_type=knownGene&amp;db=mm10&amp;hgsid=500967801_Vakd6YZAzH49xqeBY7x8QEfmp51u</a>
Ssty1	chrY:13,377,980-13,378,678	spermiogenesis specific transcript on the Y 1 (Ssty1), mRNA	<a href="http://genome.ucsc.edu/cgi-bin/hgGene?hgg_gene=uc029xsa.1&amp;hgg_prot=J3QPX2&amp;hgg_chrom=chrY&amp;hgg_start=13376412&amp;hgg_end=13378797&amp;hgg_type=knownGene&amp;db=mm10&amp;hgsid=500967801_Vakd6YZAzH49xqeBY7x8QEfmp51u">http://genome.ucsc.edu/cgi-bin/hgGene?hgg_gene=uc029xsa.1&amp;hgg_prot=J3QPX2&amp;hgg_chrom=chrY&amp;hgg_start=13376412&amp;hgg_end=13378797&amp;hgg_type=knownGene&amp;db=mm10&amp;hgsid=500967801_Vakd6YZAzH49xqeBY7x8QEfmp51u</a>
Ssty2	chrY:22,513,860-22,514,543	spermiogenesis specific transcript on the Y 2 (Ssty2), mRNA	<a href="http://genome.ucsc.edu/cgi-bin/hgGene?hgg_gene=uc029xso.1&amp;hgg_prot=Q149W4&amp;hgg_chrom=chrY&amp;hgg_start=22512350&amp;hgg_end=22514683&amp;hgg_type=knownGene&amp;db=mm10&amp;hgsid=500967801_Vakd6YZAzH49xqeBY7x8QEfmp51u">http://genome.ucsc.edu/cgi-bin/hgGene?hgg_gene=uc029xso.1&amp;hgg_prot=Q149W4&amp;hgg_chrom=chrY&amp;hgg_start=22512350&amp;hgg_end=22514683&amp;hgg_type=knownGene&amp;db=mm10&amp;hgsid=500967801_Vakd6YZAzH49xqeBY7x8QEfmp51u</a>

AB335742	chrY:43,26 5,812- 43,265,855	non-coding RNA, oocyte_clustere d_small_RNA9 43, complete sequence	<a href="http://genome.ucsc.edu/cgi-bin/hgGene?hgg_gene=uc029xye.1&amp;hgg_prot=&amp;hgg_chrom=chrY&amp;hgg_start=43265811&amp;hgg_end=43265855&amp;hgg_type=knownGene&amp;db=mm10&amp;hgsid=500967801_Vakd6YZAzH49xqeBY7x8QEfmp51u">http://genome.ucsc.edu/cgi-bin/hgGene?hgg_gene=uc029xye.1&amp;hgg_prot=&amp;hgg_chrom=chrY&amp;hgg_start=43265811&amp;hgg_end=43265855&amp;hgg_type=knownGene&amp;db=mm10&amp;hgsid=500967801_Vakd6YZAzH49xqeBY7x8QEfmp51u</a>
AB335742	chrY:40,53 4,264- 40,534,307	non-coding RNA, oocyte_clustere d_small_RNA9 43, complete sequence	<a href="http://genome.ucsc.edu/cgi-bin/hgGene?hgg_gene=uc029xxv.1&amp;hgg_prot=&amp;hgg_chrom=chrY&amp;hgg_start=40534263&amp;hgg_end=40534307&amp;hgg_type=knownGene&amp;db=mm10&amp;hgsid=500967801_Vakd6YZAzH49xqeBY7x8QEfmp51u">http://genome.ucsc.edu/cgi-bin/hgGene?hgg_gene=uc029xxv.1&amp;hgg_prot=&amp;hgg_chrom=chrY&amp;hgg_start=40534263&amp;hgg_end=40534307&amp;hgg_type=knownGene&amp;db=mm10&amp;hgsid=500967801_Vakd6YZAzH49xqeBY7x8QEfmp51u</a>
AB349653	chrY:18,89 5,613- 18,895,656	non-coding RNA, oocyte_piRNA 469, complete sequence	<a href="http://genome.ucsc.edu/cgi-bin/hgGene?hgg_gene=uc029xse.1&amp;hgg_prot=&amp;hgg_chrom=chrY&amp;hgg_start=18895612&amp;hgg_end=18895656&amp;hgg_type=knownGene&amp;db=mm10&amp;hgsid=500967801_Vakd6YZAzH49xqeBY7x8QEfmp51u">http://genome.ucsc.edu/cgi-bin/hgGene?hgg_gene=uc029xse.1&amp;hgg_prot=&amp;hgg_chrom=chrY&amp;hgg_start=18895612&amp;hgg_end=18895656&amp;hgg_type=knownGene&amp;db=mm10&amp;hgsid=500967801_Vakd6YZAzH49xqeBY7x8QEfmp51u</a>
AB349653	chrY:14,18 3,345- 14,183,388	non-coding RNA, oocyte_piRNA 469, complete sequence	<a href="http://genome.ucsc.edu/cgi-bin/hgGene?hgg_gene=uc029xsb.1&amp;hgg_prot=&amp;hgg_chrom=chrY&amp;hgg_start=14183344&amp;hgg_end=14183388&amp;hgg_type=knownGene&amp;db=mm10&amp;hgsid=500967801_Vakd6YZAzH49xqeBY7x8QEfmp51u">http://genome.ucsc.edu/cgi-bin/hgGene?hgg_gene=uc029xsb.1&amp;hgg_prot=&amp;hgg_chrom=chrY&amp;hgg_start=14183344&amp;hgg_end=14183388&amp;hgg_type=knownGene&amp;db=mm10&amp;hgsid=500967801_Vakd6YZAzH49xqeBY7x8QEfmp51u</a>
AB349653	chrY:14,18 3,345- 14,183,388	non-coding RNA, oocyte_piRNA 469, complete sequence	<a href="http://genome.ucsc.edu/cgi-bin/hgGene?hgg_gene=uc029xsb.1&amp;hgg_prot=&amp;hgg_chrom=chrY&amp;hgg_start=14183344&amp;hgg_end=14183388&amp;hgg_type=knownGene&amp;db=mm10&amp;hgsid=500967801_Vakd6YZAzH49xqeBY7x8QEfmp51u">http://genome.ucsc.edu/cgi-bin/hgGene?hgg_gene=uc029xsb.1&amp;hgg_prot=&amp;hgg_chrom=chrY&amp;hgg_start=14183344&amp;hgg_end=14183388&amp;hgg_type=knownGene&amp;db=mm10&amp;hgsid=500967801_Vakd6YZAzH49xqeBY7x8QEfmp51u</a>
AK006653	chrY:15,15 5,239- 15,178,893	adult male testis cDNA, RIKEN full- length enriched library, clone:1700040 F15	<a href="http://genome.ucsc.edu/cgi-bin/hgGene?hgg_gene=uc009vft.1&amp;hgg_prot=&amp;hgg_chrom=chrY&amp;hgg_start=15155238&amp;hgg_end=15178893&amp;hgg_type=knownGene&amp;db=mm10&amp;hgsid=500967801_Vakd6YZAzH49xqeBY7x8QEfmp51u">http://genome.ucsc.edu/cgi-bin/hgGene?hgg_gene=uc009vft.1&amp;hgg_prot=&amp;hgg_chrom=chrY&amp;hgg_start=15155238&amp;hgg_end=15178893&amp;hgg_type=knownGene&amp;db=mm10&amp;hgsid=500967801_Vakd6YZAzH49xqeBY7x8QEfmp51u</a>
AK006653	chrY:15,15 5,239- 15,178,893	adult male testis cDNA, RIKEN full- length enriched library, clone:1700040 F15	<a href="http://genome.ucsc.edu/cgi-bin/hgGene?hgg_gene=uc009vft.1&amp;hgg_prot=&amp;hgg_chrom=chrY&amp;hgg_start=15155238&amp;hgg_end=15178893&amp;hgg_type=knownGene&amp;db=mm10&amp;hgsid=500967801_Vakd6YZAzH49xqeBY7x8QEfmp51u">http://genome.ucsc.edu/cgi-bin/hgGene?hgg_gene=uc009vft.1&amp;hgg_prot=&amp;hgg_chrom=chrY&amp;hgg_start=15155238&amp;hgg_end=15178893&amp;hgg_type=knownGene&amp;db=mm10&amp;hgsid=500967801_Vakd6YZAzH49xqeBY7x8QEfmp51u</a>
DQ874391	chrY:45,87 4,035- 45,876,398	amplified spermatogenic transcript Y- encoded	<a href="http://genome.ucsc.edu/cgi-bin/hgGene?hgg_gene=uc029xza.1&amp;hgg_prot=&amp;hgg_chrom=chrY&amp;hgg_start=45874034&amp;hgg_end=45876398&amp;hgg_type=knownGene&amp;db=mm10&amp;hgsid=500967801_Vakd6YZAzH49xqeBY7x8QEfmp51u">http://genome.ucsc.edu/cgi-bin/hgGene?hgg_gene=uc029xza.1&amp;hgg_prot=&amp;hgg_chrom=chrY&amp;hgg_start=45874034&amp;hgg_end=45876398&amp;hgg_type=knownGene&amp;db=mm10&amp;hgsid=500967801_Vakd6YZAzH49xqeBY7x8QEfmp51u</a>

		mRNA sequence	
DQ874391	chrY:42,85 6,094- 42,858,456	amplified spermatogenic transcript Y-encoded mRNA sequence	<a href="http://genome.ucsc.edu/cgi-bin/hgGene?hgg_gene=uc009vfy.1&amp;hgg_prot=&amp;hgg_chrom=chrY&amp;hgg_start=42856093&amp;hgg_end=42858456&amp;hgg_type=knownGene&amp;db=mm10&amp;hgsid=500967801_Vakd6YZAzH49xqeBY7x8QEfmp51u">http://genome.ucsc.edu/cgi-bin/hgGene?hgg_gene=uc009vfy.1&amp;hgg_prot=&amp;hgg_chrom=chrY&amp;hgg_start=42856093&amp;hgg_end=42858456&amp;hgg_type=knownGene&amp;db=mm10&amp;hgsid=500967801_Vakd6YZAzH49xqeBY7x8QEfmp51u</a>
DQ874391	chrY:31,29 0,381- 31,292,742	amplified spermatogenic transcript Y-encoded mRNA sequence	<a href="http://genome.ucsc.edu/cgi-bin/hgGene?hgg_gene=uc029xux.1&amp;hgg_prot=&amp;hgg_chrom=chrY&amp;hgg_start=31290380&amp;hgg_end=31292742&amp;hgg_type=knownGene&amp;db=mm10&amp;hgsid=500967801_Vakd6YZAzH49xqeBY7x8QEfmp51u">http://genome.ucsc.edu/cgi-bin/hgGene?hgg_gene=uc029xux.1&amp;hgg_prot=&amp;hgg_chrom=chrY&amp;hgg_start=31290380&amp;hgg_end=31292742&amp;hgg_type=knownGene&amp;db=mm10&amp;hgsid=500967801_Vakd6YZAzH49xqeBY7x8QEfmp51u</a>
DQ874391	chrY:30,42 3,567- 30,425,930	amplified spermatogenic transcript Y-encoded mRNA sequence	<a href="http://genome.ucsc.edu/cgi-bin/hgGene?hgg_gene=uc009vhs.1&amp;hgg_prot=&amp;hgg_chrom=chrY&amp;hgg_start=30423566&amp;hgg_end=30425930&amp;hgg_type=knownGene&amp;db=mm10&amp;hgsid=500967801_Vakd6YZAzH49xqeBY7x8QEfmp51u">http://genome.ucsc.edu/cgi-bin/hgGene?hgg_gene=uc009vhs.1&amp;hgg_prot=&amp;hgg_chrom=chrY&amp;hgg_start=30423566&amp;hgg_end=30425930&amp;hgg_type=knownGene&amp;db=mm10&amp;hgsid=500967801_Vakd6YZAzH49xqeBY7x8QEfmp51u</a>
FJ541075	chrY:46,48 1,356- 46,536,969	piRNA piRY splice variant 1, precursor RNA, partial sequence	<a href="http://genome.ucsc.edu/cgi-bin/hgGene?hgg_gene=uc029xzb.1&amp;hgg_prot=&amp;hgg_chrom=chrY&amp;hgg_start=46481355&amp;hgg_end=46536969&amp;hgg_type=knownGene&amp;db=mm10&amp;hgsid=500967801_Vakd6YZAzH49xqeBY7x8QEfmp51u">http://genome.ucsc.edu/cgi-bin/hgGene?hgg_gene=uc029xzb.1&amp;hgg_prot=&amp;hgg_chrom=chrY&amp;hgg_start=46481355&amp;hgg_end=46536969&amp;hgg_type=knownGene&amp;db=mm10&amp;hgsid=500967801_Vakd6YZAzH49xqeBY7x8QEfmp51u</a>
FJ541078	chrY:19,86 8,054- 19,891,496	piRNA piRY splice variant 4, precursor RNA, partial sequence	<a href="http://genome.ucsc.edu/cgi-bin/hgGene?hgg_gene=uc029xsf.1&amp;hgg_prot=&amp;hgg_chrom=chrY&amp;hgg_start=19868053&amp;hgg_end=19891496&amp;hgg_type=knownGene&amp;db=mm10&amp;hgsid=500967801_Vakd6YZAzH49xqeBY7x8QEfmp51u">http://genome.ucsc.edu/cgi-bin/hgGene?hgg_gene=uc029xsf.1&amp;hgg_prot=&amp;hgg_chrom=chrY&amp;hgg_start=19868053&amp;hgg_end=19891496&amp;hgg_type=knownGene&amp;db=mm10&amp;hgsid=500967801_Vakd6YZAzH49xqeBY7x8QEfmp51u</a>
FJ541087	chrY:20,69 7,597- 20,753,364	piRNA piRY splice variant 13, precursor RNA, partial sequence	<a href="http://genome.ucsc.edu/cgi-bin/hgGene?hgg_gene=uc029xsh.1&amp;hgg_prot=&amp;hgg_chrom=chrY&amp;hgg_start=20697596&amp;hgg_end=20753364&amp;hgg_type=knownGene&amp;db=mm10&amp;hgsid=500967801_Vakd6YZAzH49xqeBY7x8QEfmp51u">http://genome.ucsc.edu/cgi-bin/hgGene?hgg_gene=uc029xsh.1&amp;hgg_prot=&amp;hgg_chrom=chrY&amp;hgg_start=20697596&amp;hgg_end=20753364&amp;hgg_type=knownGene&amp;db=mm10&amp;hgsid=500967801_Vakd6YZAzH49xqeBY7x8QEfmp51u</a>
FJ541095	chrY:43,11 7,378- 43,173,007	piRNA piRY splice variant 21, precursor RNA, partial sequence	<a href="http://genome.ucsc.edu/cgi-bin/hgGene?hgg_gene=uc029xyb.1&amp;hgg_prot=&amp;hgg_chrom=chrY&amp;hgg_start=43117377&amp;hgg_end=43173007&amp;hgg_type=knownGene&amp;db=mm10&amp;hgsid=500967801_Vakd6YZAzH49xqeBY7x8QEfmp51u">http://genome.ucsc.edu/cgi-bin/hgGene?hgg_gene=uc029xyb.1&amp;hgg_prot=&amp;hgg_chrom=chrY&amp;hgg_start=43117377&amp;hgg_end=43173007&amp;hgg_type=knownGene&amp;db=mm10&amp;hgsid=500967801_Vakd6YZAzH49xqeBY7x8QEfmp51u</a>
FJ541095	chrY:42,53 3,944- 42,568,599	piRNA piRY splice variant 21, precursor RNA, partial sequence	<a href="http://genome.ucsc.edu/cgi-bin/hgGene?hgg_gene=uc029xxw.1&amp;hgg_prot=A0A087WNW5&amp;hgg_chrom=chrY&amp;hgg_start=42533932&amp;hgg_end=42582060&amp;hgg_type=knownGene&amp;db=mm10&amp;hgsid=500967801_Vakd6YZAzH49xqeBY7x8QEfmp51u">http://genome.ucsc.edu/cgi-bin/hgGene?hgg_gene=uc029xxw.1&amp;hgg_prot=A0A087WNW5&amp;hgg_chrom=chrY&amp;hgg_start=42533932&amp;hgg_end=42582060&amp;hgg_type=knownGene&amp;db=mm10&amp;hgsid=500967801_Vakd6YZAzH49xqeBY7x8QEfmp51u</a>

Gm20736	chrY:28,24 5,548- 28,270,080	predicted gene, 20736 (Gm20736), mRNA	<a href="http://genome.ucsc.edu/cgi-bin/hgGene?hgg_gene=uc029xte.1&amp;hgg_prot=A0A087WSR0&amp;hgg_chrom=chrY&amp;hgg_start=28245356&amp;hgg_end=28271524&amp;hgg_type=knownGene&amp;db=mm10&amp;hgsid=500967801_Vakd6YZAzH49xqeBY7x8QEfmp51u">http://genome.ucsc.edu/cgi-bin/hgGene?hgg_gene=uc029xte.1&amp;hgg_prot=A0A087WSR0&amp;hgg_chrom=chrY&amp;hgg_start=28245356&amp;hgg_end=28271524&amp;hgg_type=knownGene&amp;db=mm10&amp;hgsid=500967801_Vakd6YZAzH49xqeBY7x8QEfmp51u</a>
Gm20736	chrY:22,83 5,282- 22,859,834	predicted gene, 20736 (Gm20736), mRNA	<a href="http://genome.ucsc.edu/cgi-bin/hgGene?hgg_gene=uc029xsp.1&amp;hgg_prot=J3QNV4&amp;hgg_chrom=chrY&amp;hgg_start=22835090&amp;hgg_end=22861268&amp;hgg_type=knownGene&amp;db=mm10&amp;hgsid=500967801_Vakd6YZAzH49xqeBY7x8QEfmp51u">http://genome.ucsc.edu/cgi-bin/hgGene?hgg_gene=uc029xsp.1&amp;hgg_prot=J3QNV4&amp;hgg_chrom=chrY&amp;hgg_start=22835090&amp;hgg_end=22861268&amp;hgg_type=knownGene&amp;db=mm10&amp;hgsid=500967801_Vakd6YZAzH49xqeBY7x8QEfmp51u</a>
Gm20736	chrY:20,96 7,673- 20,992,230	predicted gene, 20736 (Gm20736), mRNA	<a href="http://genome.ucsc.edu/cgi-bin/hgGene?hgg_gene=uc029xsl.1&amp;hgg_prot=A0A087WSR0&amp;hgg_chrom=chrY&amp;hgg_start=20967481&amp;hgg_end=20993669&amp;hgg_type=knownGene&amp;db=mm10&amp;hgsid=500967801_Vakd6YZAzH49xqeBY7x8QEfmp51u">http://genome.ucsc.edu/cgi-bin/hgGene?hgg_gene=uc029xsl.1&amp;hgg_prot=A0A087WSR0&amp;hgg_chrom=chrY&amp;hgg_start=20967481&amp;hgg_end=20993669&amp;hgg_type=knownGene&amp;db=mm10&amp;hgsid=500967801_Vakd6YZAzH49xqeBY7x8QEfmp51u</a>
Gm20747	chrY:21,16 6,083- 21,166,766	predicted gene, 20747 (Gm20747), mRNA	<a href="http://genome.ucsc.edu/cgi-bin/hgGene?hgg_gene=uc029xsm.1&amp;hgg_prot=Q5FWB5&amp;hgg_chrom=chrY&amp;hgg_start=21164553&amp;hgg_end=21166898&amp;hgg_type=knownGene&amp;db=mm10&amp;hgsid=500967801_Vakd6YZAzH49xqeBY7x8QEfmp51u">http://genome.ucsc.edu/cgi-bin/hgGene?hgg_gene=uc029xsm.1&amp;hgg_prot=Q5FWB5&amp;hgg_chrom=chrY&amp;hgg_start=21164553&amp;hgg_end=21166898&amp;hgg_type=knownGene&amp;db=mm10&amp;hgsid=500967801_Vakd6YZAzH49xqeBY7x8QEfmp51u</a>
Gm20806	chrY:27,69 2,628- 27,693,311	predicted gene, 20806 (Gm20806), mRNA	<a href="http://genome.ucsc.edu/cgi-bin/hgGene?hgg_gene=uc029xtd.1&amp;hgg_prot=Q9D9T3&amp;hgg_chrom=chrY&amp;hgg_start=27691135&amp;hgg_end=27693439&amp;hgg_type=knownGene&amp;db=mm10&amp;hgsid=500967801_Vakd6YZAzH49xqeBY7x8QEfmp51u">http://genome.ucsc.edu/cgi-bin/hgGene?hgg_gene=uc029xtd.1&amp;hgg_prot=Q9D9T3&amp;hgg_chrom=chrY&amp;hgg_start=27691135&amp;hgg_end=27693439&amp;hgg_type=knownGene&amp;db=mm10&amp;hgsid=500967801_Vakd6YZAzH49xqeBY7x8QEfmp51u</a>
Gm20806	chrY:26,94 7,544- 26,948,227	predicted gene, 20806 (Gm20806), mRNA	<a href="http://genome.ucsc.edu/cgi-bin/hgGene?hgg_gene=uc029xtc.1&amp;hgg_prot=Q9D9T3&amp;hgg_chrom=chrY&amp;hgg_start=26946051&amp;hgg_end=26948355&amp;hgg_type=knownGene&amp;db=mm10&amp;hgsid=500967801_Vakd6YZAzH49xqeBY7x8QEfmp51u">http://genome.ucsc.edu/cgi-bin/hgGene?hgg_gene=uc029xtc.1&amp;hgg_prot=Q9D9T3&amp;hgg_chrom=chrY&amp;hgg_start=26946051&amp;hgg_end=26948355&amp;hgg_type=knownGene&amp;db=mm10&amp;hgsid=500967801_Vakd6YZAzH49xqeBY7x8QEfmp51u</a>
Gm20809	chrY:25,99 5,821- 25,996,504	predicted gene, 20809 (Gm20809), mRNA	<a href="http://genome.ucsc.edu/cgi-bin/hgGene?hgg_gene=uc029xta.1&amp;hgg_prot=Q62458&amp;hgg_chrom=chrY&amp;hgg_start=25995643&amp;hgg_end=25996635&amp;hgg_type=knownGene&amp;db=mm10&amp;hgsid=500967801_Vakd6YZAzH49xqeBY7x8QEfmp51u">http://genome.ucsc.edu/cgi-bin/hgGene?hgg_gene=uc029xta.1&amp;hgg_prot=Q62458&amp;hgg_chrom=chrY&amp;hgg_start=25995643&amp;hgg_end=25996635&amp;hgg_type=knownGene&amp;db=mm10&amp;hgsid=500967801_Vakd6YZAzH49xqeBY7x8QEfmp51u</a>
Gm20809	chrY:25,48 2,701- 25,483,384	predicted gene, 20809 (Gm20809), mRNA	<a href="http://genome.ucsc.edu/cgi-bin/hgGene?hgg_gene=uc029xsy.1&amp;hgg_prot=Q62458&amp;hgg_chrom=chrY&amp;hgg_start=25482523&amp;hgg_end=25483515&amp;hgg_type=knownGene&amp;db=mm10&amp;hgsid=500967801_Vakd6YZAzH49xqeBY7x8QEfmp51u">http://genome.ucsc.edu/cgi-bin/hgGene?hgg_gene=uc029xsy.1&amp;hgg_prot=Q62458&amp;hgg_chrom=chrY&amp;hgg_start=25482523&amp;hgg_end=25483515&amp;hgg_type=knownGene&amp;db=mm10&amp;hgsid=500967801_Vakd6YZAzH49xqeBY7x8QEfmp51u</a>
Gm20809	chrY:24,96 9,606- 24,970,289	predicted gene, 20809 (Gm20809), mRNA	<a href="http://genome.ucsc.edu/cgi-bin/hgGene?hgg_gene=uc029xsw.1&amp;hgg_prot=Q62458&amp;hgg_chrom=chrY&amp;hgg_start=24969428&amp;hgg_end=24970420&amp;hgg_type=knownGene&amp;db=mm10&amp;hgsid=500967801_Vakd6YZAzH49xqeBY7x8QEfmp51u">http://genome.ucsc.edu/cgi-bin/hgGene?hgg_gene=uc029xsw.1&amp;hgg_prot=Q62458&amp;hgg_chrom=chrY&amp;hgg_start=24969428&amp;hgg_end=24970420&amp;hgg_type=knownGene&amp;db=mm10&amp;hgsid=500967801_Vakd6YZAzH49xqeBY7x8QEfmp51u</a>

Gm20809	chrY:24,45 6,582- 24,457,265	predicted gene, 20809 (Gm20809), mRNA	<a href="http://genome.ucsc.edu/cgi-bin/hgGene?hgg_gene=uc029xsu.1&amp;hgg_prot=Q62458&amp;hgg_chrom=chrY&amp;hgg_start=24456404&amp;hgg_end=24457396&amp;hgg_type=knownGene&amp;db=mm10&amp;hgsid=500967801_Vakd6YZAzH49xqeBY7x8QEfmp51u">http://genome.ucsc.edu/cgi-bin/hgGene?hgg_gene=uc029xsu.1&amp;hgg_prot=Q62458&amp;hgg_chrom=chrY&amp;hgg_start=24456404&amp;hgg_end=24457396&amp;hgg_type=knownGene&amp;db=mm10&amp;hgsid=500967801_Vakd6YZAzH49xqeBY7x8QEfmp51u</a>
Gm20809	chrY:23,94 3,343- 23,944,026	predicted gene, 20809 (Gm20809), mRNA	<a href="http://genome.ucsc.edu/cgi-bin/hgGene?hgg_gene=uc029xss.1&amp;hgg_prot=Q62458&amp;hgg_chrom=chrY&amp;hgg_start=23943165&amp;hgg_end=23944157&amp;hgg_type=knownGene&amp;db=mm10&amp;hgsid=500967801_Vakd6YZAzH49xqeBY7x8QEfmp51u">http://genome.ucsc.edu/cgi-bin/hgGene?hgg_gene=uc029xss.1&amp;hgg_prot=Q62458&amp;hgg_chrom=chrY&amp;hgg_start=23943165&amp;hgg_end=23944157&amp;hgg_type=knownGene&amp;db=mm10&amp;hgsid=500967801_Vakd6YZAzH49xqeBY7x8QEfmp51u</a>
Gm20815	chrY:8,832 ,956- 8,833,639	predicted gene, 20815 (Gm20815), mRNA	<a href="http://genome.ucsc.edu/cgi-bin/hgGene?hgg_gene=uc012hti.1&amp;hgg_prot=J3KMI0&amp;hgg_chrom=chrY&amp;hgg_start=8832248&amp;hgg_end=8835169&amp;hgg_type=knownGene&amp;db=mm10&amp;hgsid=500967801_Vakd6YZAzH49xqeBY7x8QEfmp51u">http://genome.ucsc.edu/cgi-bin/hgGene?hgg_gene=uc012hti.1&amp;hgg_prot=J3KMI0&amp;hgg_chrom=chrY&amp;hgg_start=8832248&amp;hgg_end=8835169&amp;hgg_type=knownGene&amp;db=mm10&amp;hgsid=500967801_Vakd6YZAzH49xqeBY7x8QEfmp51u</a>
Gm20822	chrY:15,88 2,559- 15,883,245	predicted gene, 20822 (Gm20822), mRNA	<a href="http://genome.ucsc.edu/cgi-bin/hgGene?hgg_gene=uc012hsg.1&amp;hgg_prot=J3KMI7&amp;hgg_chrom=chrY&amp;hgg_start=15882558&amp;hgg_end=15883245&amp;hgg_type=knownGene&amp;db=mm10&amp;hgsid=500967801_Vakd6YZAzH49xqeBY7x8QEfmp51u">http://genome.ucsc.edu/cgi-bin/hgGene?hgg_gene=uc012hsg.1&amp;hgg_prot=J3KMI7&amp;hgg_chrom=chrY&amp;hgg_start=15882558&amp;hgg_end=15883245&amp;hgg_type=knownGene&amp;db=mm10&amp;hgsid=500967801_Vakd6YZAzH49xqeBY7x8QEfmp51u</a>
Gm20822	chrY:15,88 2,559- 15,883,245	predicted gene, 20822 (Gm20822), mRNA	<a href="http://genome.ucsc.edu/cgi-bin/hgGene?hgg_gene=uc012hsg.1&amp;hgg_prot=J3KMI7&amp;hgg_chrom=chrY&amp;hgg_start=15882558&amp;hgg_end=15883245&amp;hgg_type=knownGene&amp;db=mm10&amp;hgsid=500967801_Vakd6YZAzH49xqeBY7x8QEfmp51u">http://genome.ucsc.edu/cgi-bin/hgGene?hgg_gene=uc012hsg.1&amp;hgg_prot=J3KMI7&amp;hgg_chrom=chrY&amp;hgg_start=15882558&amp;hgg_end=15883245&amp;hgg_type=knownGene&amp;db=mm10&amp;hgsid=500967801_Vakd6YZAzH49xqeBY7x8QEfmp51u</a>
Gm20822	chrY:11,19 7,162- 11,197,848	predicted gene, 20822 (Gm20822), mRNA	<a href="http://genome.ucsc.edu/cgi-bin/hgGene?hgg_gene=uc012hsi.1&amp;hgg_prot=J3KMI7&amp;hgg_chrom=chrY&amp;hgg_start=11197161&amp;hgg_end=11197848&amp;hgg_type=knownGene&amp;db=mm10&amp;hgsid=500967801_Vakd6YZAzH49xqeBY7x8QEfmp51u">http://genome.ucsc.edu/cgi-bin/hgGene?hgg_gene=uc012hsi.1&amp;hgg_prot=J3KMI7&amp;hgg_chrom=chrY&amp;hgg_start=11197161&amp;hgg_end=11197848&amp;hgg_type=knownGene&amp;db=mm10&amp;hgsid=500967801_Vakd6YZAzH49xqeBY7x8QEfmp51u</a>
Gm20826	chrY:7,167 ,094- 7,167,777	predicted gene, 20826 (Gm20826), mRNA	<a href="http://genome.ucsc.edu/cgi-bin/hgGene?hgg_gene=uc012hsn.2&amp;hgg_prot=J3QK38&amp;hgg_chrom=chrY&amp;hgg_start=7167019&amp;hgg_end=7636973&amp;hgg_type=knownGene&amp;db=mm10&amp;hgsid=500967801_Vakd6YZAzH49xqeBY7x8QEfmp51u">http://genome.ucsc.edu/cgi-bin/hgGene?hgg_gene=uc012hsn.2&amp;hgg_prot=J3QK38&amp;hgg_chrom=chrY&amp;hgg_start=7167019&amp;hgg_end=7636973&amp;hgg_type=knownGene&amp;db=mm10&amp;hgsid=500967801_Vakd6YZAzH49xqeBY7x8QEfmp51u</a>
Gm20831	chrY:17,96 6,778- 17,967,476	predicted gene, 20831 (Gm20831), mRNA	<a href="http://genome.ucsc.edu/cgi-bin/hgGene?hgg_gene=uc009vfw.1&amp;hgg_prot=Q3TTD8&amp;hgg_chrom=chrY&amp;hgg_start=17965159&amp;hgg_end=17967598&amp;hgg_type=knownGene&amp;db=mm10&amp;hgsid=500967801_Vakd6YZAzH49xqeBY7x8QEfmp51u">http://genome.ucsc.edu/cgi-bin/hgGene?hgg_gene=uc009vfw.1&amp;hgg_prot=Q3TTD8&amp;hgg_chrom=chrY&amp;hgg_start=17965159&amp;hgg_end=17967598&amp;hgg_type=knownGene&amp;db=mm10&amp;hgsid=500967801_Vakd6YZAzH49xqeBY7x8QEfmp51u</a>
Gm20831	chrY:17,96 6,778- 17,967,476	predicted gene, 20831 (Gm20831), mRNA	<a href="http://genome.ucsc.edu/cgi-bin/hgGene?hgg_gene=uc009vfw.1&amp;hgg_prot=Q3TTD8&amp;hgg_chrom=chrY&amp;hgg_start=17965159&amp;hgg_end=17967598&amp;hgg_type=knownGene&amp;db=mm10&amp;hgsid=500967801_Vakd6YZAzH49xqeBY7x8QEfmp51u">http://genome.ucsc.edu/cgi-bin/hgGene?hgg_gene=uc009vfw.1&amp;hgg_prot=Q3TTD8&amp;hgg_chrom=chrY&amp;hgg_start=17965159&amp;hgg_end=17967598&amp;hgg_type=knownGene&amp;db=mm10&amp;hgsid=500967801_Vakd6YZAzH49xqeBY7x8QEfmp51u</a>

Gm20831	chrY:13,25 4,009- 13,254,707	predicted gene, 20831 (Gm20831), mRNA	<a href="http://genome.ucsc.edu/cgi-bin/hgGene?hgg_gene=uc029xrz.1&amp;hgg_prot=Q3TTD8&amp;hgg_chrom=chrY&amp;hgg_start=13252390&amp;hgg_end=13254829&amp;hgg_type=knownGene&amp;db=mm10&amp;hgsid=500967801_Vakd6YZAzH49xqeBY7x8QEfmp51u">http://genome.ucsc.edu/cgi-bin/hgGene?hgg_gene=uc029xrz.1&amp;hgg_prot=Q3TTD8&amp;hgg_chrom=chrY&amp;hgg_start=13252390&amp;hgg_end=13254829&amp;hgg_type=knownGene&amp;db=mm10&amp;hgsid=500967801_Vakd6YZAzH49xqeBY7x8QEfmp51u</a>
Gm20837	chrY:44,20 9,133- 44,263,016	-	<a href="http://genome.ucsc.edu/cgi-bin/hgGene?hgg_gene=uc029xyf.1&amp;hgg_prot=A0A087WP97&amp;hgg_chrom=chrY&amp;hgg_start=44209121&amp;hgg_end=44263039&amp;hgg_type=knownGene&amp;db=mm10&amp;hgsid=500967801_Vakd6YZAzH49xqeBY7x8QEfmp51u">http://genome.ucsc.edu/cgi-bin/hgGene?hgg_gene=uc029xyf.1&amp;hgg_prot=A0A087WP97&amp;hgg_chrom=chrY&amp;hgg_start=44209121&amp;hgg_end=44263039&amp;hgg_type=knownGene&amp;db=mm10&amp;hgsid=500967801_Vakd6YZAzH49xqeBY7x8QEfmp51u</a>
Gm20837	chrY:30,68 2,565- 30,737,131	-	<a href="http://genome.ucsc.edu/cgi-bin/hgGene?hgg_gene=uc029xuc.1&amp;hgg_prot=A0A087WP97&amp;hgg_chrom=chrY&amp;hgg_start=30682553&amp;hgg_end=30737154&amp;hgg_type=knownGene&amp;db=mm10&amp;hgsid=500967801_Vakd6YZAzH49xqeBY7x8QEfmp51u">http://genome.ucsc.edu/cgi-bin/hgGene?hgg_gene=uc029xuc.1&amp;hgg_prot=A0A087WP97&amp;hgg_chrom=chrY&amp;hgg_start=30682553&amp;hgg_end=30737154&amp;hgg_type=knownGene&amp;db=mm10&amp;hgsid=500967801_Vakd6YZAzH49xqeBY7x8QEfmp51u</a>
Gm20837	chrY:29,62 8,689- 29,683,370	-	<a href="http://genome.ucsc.edu/cgi-bin/hgGene?hgg_gene=uc029xtf.1&amp;hgg_prot=A0A087WP97&amp;hgg_chrom=chrY&amp;hgg_start=29628677&amp;hgg_end=29683393&amp;hgg_type=knownGene&amp;db=mm10&amp;hgsid=500967801_Vakd6YZAzH49xqeBY7x8QEfmp51u">http://genome.ucsc.edu/cgi-bin/hgGene?hgg_gene=uc029xtf.1&amp;hgg_prot=A0A087WP97&amp;hgg_chrom=chrY&amp;hgg_start=29628677&amp;hgg_end=29683393&amp;hgg_type=knownGene&amp;db=mm10&amp;hgsid=500967801_Vakd6YZAzH49xqeBY7x8QEfmp51u</a>
Gm20857	chrY:26,24 1,092- 26,267,093	predicted gene, 20857 (Gm20857), non-coding RNA	<a href="http://genome.ucsc.edu/cgi-bin/hgGene?hgg_gene=uc029xtb.1&amp;hgg_prot=&amp;hgg_chrom=chrY&amp;hgg_start=26241091&amp;hgg_end=26267093&amp;hgg_type=knownGene&amp;db=mm10&amp;hgsid=500967801_Vakd6YZAzH49xqeBY7x8QEfmp51u">http://genome.ucsc.edu/cgi-bin/hgGene?hgg_gene=uc029xtb.1&amp;hgg_prot=&amp;hgg_chrom=chrY&amp;hgg_start=26241091&amp;hgg_end=26267093&amp;hgg_type=knownGene&amp;db=mm10&amp;hgsid=500967801_Vakd6YZAzH49xqeBY7x8QEfmp51u</a>
Gm20857	chrY:25,72 7,936- 25,753,940	predicted gene, 20857 (Gm20857), non-coding RNA	<a href="http://genome.ucsc.edu/cgi-bin/hgGene?hgg_gene=uc029xsz.1&amp;hgg_prot=&amp;hgg_chrom=chrY&amp;hgg_start=25727935&amp;hgg_end=25753940&amp;hgg_type=knownGene&amp;db=mm10&amp;hgsid=500967801_Vakd6YZAzH49xqeBY7x8QEfmp51u">http://genome.ucsc.edu/cgi-bin/hgGene?hgg_gene=uc029xsz.1&amp;hgg_prot=&amp;hgg_chrom=chrY&amp;hgg_start=25727935&amp;hgg_end=25753940&amp;hgg_type=knownGene&amp;db=mm10&amp;hgsid=500967801_Vakd6YZAzH49xqeBY7x8QEfmp51u</a>
Gm20857	chrY:25,21 4,874- 25,240,906	predicted gene, 20857 (Gm20857), non-coding RNA	<a href="http://genome.ucsc.edu/cgi-bin/hgGene?hgg_gene=uc029xsx.1&amp;hgg_prot=&amp;hgg_chrom=chrY&amp;hgg_start=25214873&amp;hgg_end=25240906&amp;hgg_type=knownGene&amp;db=mm10&amp;hgsid=500967801_Vakd6YZAzH49xqeBY7x8QEfmp51u">http://genome.ucsc.edu/cgi-bin/hgGene?hgg_gene=uc029xsx.1&amp;hgg_prot=&amp;hgg_chrom=chrY&amp;hgg_start=25214873&amp;hgg_end=25240906&amp;hgg_type=knownGene&amp;db=mm10&amp;hgsid=500967801_Vakd6YZAzH49xqeBY7x8QEfmp51u</a>
Gm20857	chrY:24,70 1,804- 24,727,810	predicted gene, 20857 (Gm20857), non-coding RNA	<a href="http://genome.ucsc.edu/cgi-bin/hgGene?hgg_gene=uc029xsv.1&amp;hgg_prot=&amp;hgg_chrom=chrY&amp;hgg_start=24701803&amp;hgg_end=24727810&amp;hgg_type=knownGene&amp;db=mm10&amp;hgsid=500967801_Vakd6YZAzH49xqeBY7x8QEfmp51u">http://genome.ucsc.edu/cgi-bin/hgGene?hgg_gene=uc029xsv.1&amp;hgg_prot=&amp;hgg_chrom=chrY&amp;hgg_start=24701803&amp;hgg_end=24727810&amp;hgg_type=knownGene&amp;db=mm10&amp;hgsid=500967801_Vakd6YZAzH49xqeBY7x8QEfmp51u</a>
Gm20857	chrY:24,18 8,659- 24,214,668	predicted gene, 20857 (Gm20857), non-coding RNA	<a href="http://genome.ucsc.edu/cgi-bin/hgGene?hgg_gene=uc029xst.1&amp;hgg_prot=&amp;hgg_chrom=chrY&amp;hgg_start=24188658&amp;hgg_end=24214668&amp;hgg_type=knownGene&amp;db=mm10&amp;hgsid=500967801_Vakd6YZAzH49xqeBY7x8QEfmp51u">http://genome.ucsc.edu/cgi-bin/hgGene?hgg_gene=uc029xst.1&amp;hgg_prot=&amp;hgg_chrom=chrY&amp;hgg_start=24188658&amp;hgg_end=24214668&amp;hgg_type=knownGene&amp;db=mm10&amp;hgsid=500967801_Vakd6YZAzH49xqeBY7x8QEfmp51u</a>



Gm20865	chrY:21,24 3,092- 21,243,775	predicted gene, 20865 (Gm20865), mRNA	<a href="http://genome.ucsc.edu/cgi-bin/hgGene?hgg_gene=uc029xsn.1&amp;hgg_prot=Q62460&amp;hgg_chrom=chrY&amp;hgg_start=21242965&amp;hgg_end=21243823&amp;hgg_type=knownGene&amp;db=mm10&amp;hgsid=500967801_Vakd6YZAzH49xqeBY7x8QEfmp51u">http://genome.ucsc.edu/cgi-bin/hgGene?hgg_gene=uc029xsn.1&amp;hgg_prot=Q62460&amp;hgg_chrom=chrY&amp;hgg_start=21242965&amp;hgg_end=21243823&amp;hgg_type=knownGene&amp;db=mm10&amp;hgsid=500967801_Vakd6YZAzH49xqeBY7x8QEfmp51u</a>
Gm20871	chrY:42,93 0,323- 43,978,241	predicted gene, 20871 (Gm20871), non-coding RNA	<a href="http://genome.ucsc.edu/cgi-bin/hgGene?hgg_gene=uc029xya.1&amp;hgg_prot=&amp;hgg_chrom=chrY&amp;hgg_start=42930322&amp;hgg_end=43978241&amp;hgg_type=knownGene&amp;db=mm10&amp;hgsid=500967801_Vakd6YZAzH49xqeBY7x8QEfmp51u">http://genome.ucsc.edu/cgi-bin/hgGene?hgg_gene=uc029xya.1&amp;hgg_prot=&amp;hgg_chrom=chrY&amp;hgg_start=42930322&amp;hgg_end=43978241&amp;hgg_type=knownGene&amp;db=mm10&amp;hgsid=500967801_Vakd6YZAzH49xqeBY7x8QEfmp51u</a>
Gm20871	chrY:30,49 9,166- 30,523,158	predicted gene, 20871 (Gm20871), non-coding RNA	<a href="http://genome.ucsc.edu/cgi-bin/hgGene?hgg_gene=uc029xub.1&amp;hgg_prot=A0A087WSR0&amp;hgg_chrom=chrY&amp;hgg_start=30497728&amp;hgg_end=30523759&amp;hgg_type=knownGene&amp;db=mm10&amp;hgsid=500967801_Vakd6YZAzH49xqeBY7x8QEfmp51u">http://genome.ucsc.edu/cgi-bin/hgGene?hgg_gene=uc029xub.1&amp;hgg_prot=A0A087WSR0&amp;hgg_chrom=chrY&amp;hgg_start=30497728&amp;hgg_end=30523759&amp;hgg_type=knownGene&amp;db=mm10&amp;hgsid=500967801_Vakd6YZAzH49xqeBY7x8QEfmp51u</a>
Gm20877	chrY:17,09 5,074- 17,095,757	predicted gene, 20877 (Gm20877), mRNA	<a href="http://genome.ucsc.edu/cgi-bin/hgGene?hgg_gene=uc029xsc.1&amp;hgg_prot=J3QPZ4&amp;hgg_chrom=chrY&amp;hgg_start=17093878&amp;hgg_end=17095887&amp;hgg_type=knownGene&amp;db=mm10&amp;hgsid=500967801_Vakd6YZAzH49xqeBY7x8QEfmp51u">http://genome.ucsc.edu/cgi-bin/hgGene?hgg_gene=uc029xsc.1&amp;hgg_prot=J3QPZ4&amp;hgg_chrom=chrY&amp;hgg_start=17093878&amp;hgg_end=17095887&amp;hgg_type=knownGene&amp;db=mm10&amp;hgsid=500967801_Vakd6YZAzH49xqeBY7x8QEfmp51u</a>
Gm20877	chrY:17,09 5,074- 17,095,757	predicted gene, 20877 (Gm20877), mRNA	<a href="http://genome.ucsc.edu/cgi-bin/hgGene?hgg_gene=uc029xsc.1&amp;hgg_prot=J3QPZ4&amp;hgg_chrom=chrY&amp;hgg_start=17093878&amp;hgg_end=17095887&amp;hgg_type=knownGene&amp;db=mm10&amp;hgsid=500967801_Vakd6YZAzH49xqeBY7x8QEfmp51u">http://genome.ucsc.edu/cgi-bin/hgGene?hgg_gene=uc029xsc.1&amp;hgg_prot=J3QPZ4&amp;hgg_chrom=chrY&amp;hgg_start=17093878&amp;hgg_end=17095887&amp;hgg_type=knownGene&amp;db=mm10&amp;hgsid=500967801_Vakd6YZAzH49xqeBY7x8QEfmp51u</a>
Gm20877	chrY:12,38 3,184- 12,383,867	predicted gene, 20877 (Gm20877), mRNA	<a href="http://genome.ucsc.edu/cgi-bin/hgGene?hgg_gene=uc012hsk.1&amp;hgg_prot=J3QPZ4&amp;hgg_chrom=chrY&amp;hgg_start=12381988&amp;hgg_end=12383997&amp;hgg_type=knownGene&amp;db=mm10&amp;hgsid=500967801_Vakd6YZAzH49xqeBY7x8QEfmp51u">http://genome.ucsc.edu/cgi-bin/hgGene?hgg_gene=uc012hsk.1&amp;hgg_prot=J3QPZ4&amp;hgg_chrom=chrY&amp;hgg_start=12381988&amp;hgg_end=12383997&amp;hgg_type=knownGene&amp;db=mm10&amp;hgsid=500967801_Vakd6YZAzH49xqeBY7x8QEfmp51u</a>
Gm20917	chrY:23,03 1,235- 23,031,918	predicted gene, 20917 (Gm20917), mRNA	<a href="http://genome.ucsc.edu/cgi-bin/hgGene?hgg_gene=uc029xsr.1&amp;hgg_prot=Q62457&amp;hgg_chrom=chrY&amp;hgg_start=23031058&amp;hgg_end=23032050&amp;hgg_type=knownGene&amp;db=mm10&amp;hgsid=500967801_Vakd6YZAzH49xqeBY7x8QEfmp51u">http://genome.ucsc.edu/cgi-bin/hgGene?hgg_gene=uc029xsr.1&amp;hgg_prot=Q62457&amp;hgg_chrom=chrY&amp;hgg_start=23031058&amp;hgg_end=23032050&amp;hgg_type=knownGene&amp;db=mm10&amp;hgsid=500967801_Vakd6YZAzH49xqeBY7x8QEfmp51u</a>
Gm21746	chrY:6,237 ,453- 6,237,995	predicted gene, 21746 (Gm21746), mRNA	<a href="https://genome.ucsc.edu/cgi-bin/hgc?hgsid=512004667_nnUUiRL0XAEIvOvMqv8RWMa25fHI&amp;c=chrY&amp;l=6119999&amp;r=6570000&amp;o=6237452&amp;t=6237995&amp;g=ensGene&amp;i=ENSMUST00000177612">https://genome.ucsc.edu/cgi-bin/hgc?hgsid=512004667_nnUUiRL0XAEIvOvMqv8RWMa25fHI&amp;c=chrY&amp;l=6119999&amp;r=6570000&amp;o=6237452&amp;t=6237995&amp;g=ensGene&amp;i=ENSMUST00000177612</a>
Gm20873	chrY:6,268 ,725- 6,269,423	predicted gene, 20873 (Gm20873), mRNA	<a href="https://genome.ucsc.edu/cgi-bin/hgc?hgsid=512004667_nnUUiRL0XAEIvOvMqv8RWMa25fHI&amp;c=chrY&amp;l=6119999&amp;r=6570000&amp;o=6268724&amp;t=6269423&amp;g=ensGene&amp;i=ENSMUST00000179410">https://genome.ucsc.edu/cgi-bin/hgc?hgsid=512004667_nnUUiRL0XAEIvOvMqv8RWMa25fHI&amp;c=chrY&amp;l=6119999&amp;r=6570000&amp;o=6268724&amp;t=6269423&amp;g=ensGene&amp;i=ENSMUST00000179410</a>

AB351778	chrY:6,530,295-6,530,316	Mus musculus non-coding RNA, oocyte_piRNA 2594	<a href="https://genome.ucsc.edu/cgi-bin/hgc?hgsid=512004667_nnUUiRL0XAEIvOvMqv8RWMa25fHI&amp;c=chrY&amp;l=6119999&amp;r=6570000&amp;o=6530294&amp;t=6530316&amp;g=mrna&amp;i=AB351778">https://genome.ucsc.edu/cgi-bin/hgc?hgsid=512004667_nnUUiRL0XAEIvOvMqv8RWMa25fHI&amp;c=chrY&amp;l=6119999&amp;r=6570000&amp;o=6530294&amp;t=6530316&amp;g=mrna&amp;i=AB351778</a>
AB349505	chrY:6,530,296-6,530,319	Mus musculus non-coding RNA, oocyte_piRNA 321	<a href="https://genome.ucsc.edu/cgi-bin/hgc?hgsid=512004667_nnUUiRL0XAEIvOvMqv8RWMa25fHI&amp;c=chrY&amp;l=6119999&amp;r=6570000&amp;o=6530295&amp;t=6530319&amp;g=mrna&amp;i=AB349505">https://genome.ucsc.edu/cgi-bin/hgc?hgsid=512004667_nnUUiRL0XAEIvOvMqv8RWMa25fHI&amp;c=chrY&amp;l=6119999&amp;r=6570000&amp;o=6530295&amp;t=6530319&amp;g=mrna&amp;i=AB349505</a>
AB349959	chrY:6,530,337-6,530,361	Mus musculus non-coding RNA, oocyte_piRNA 775	<a href="https://genome.ucsc.edu/cgi-bin/hgc?hgsid=512004667_nnUUiRL0XAEIvOvMqv8RWMa25fHI&amp;c=chrY&amp;l=6119999&amp;r=6570000&amp;o=6530336&amp;t=6530361&amp;g=mrna&amp;i=AB349959">https://genome.ucsc.edu/cgi-bin/hgc?hgsid=512004667_nnUUiRL0XAEIvOvMqv8RWMa25fHI&amp;c=chrY&amp;l=6119999&amp;r=6570000&amp;o=6530336&amp;t=6530361&amp;g=mrna&amp;i=AB349959</a>
DQ874391	chrY:46,847,641-46,850,004	Mus musculus amplified spermatogenic transcript Y-encoded mRNA sequence	<a href="https://genome.ucsc.edu/cgi-bin/hgGene?hgg_gene=uc029xzc.1&amp;hgg_prot=&amp;hgg_chrom=chrY&amp;hgg_start=46847640&amp;hgg_end=46850004&amp;hgg_type=knownGene&amp;db=mm10&amp;hgsid=512004667_nnUUiRL0XAEIvOvMqv8RWMa25fHI">https://genome.ucsc.edu/cgi-bin/hgGene?hgg_gene=uc029xzc.1&amp;hgg_prot=&amp;hgg_chrom=chrY&amp;hgg_start=46847640&amp;hgg_end=46850004&amp;hgg_type=knownGene&amp;db=mm10&amp;hgsid=512004667_nnUUiRL0XAEIvOvMqv8RWMa25fHI</a>
Gm21247	chrY:46,757,399-46,758,082	predicted gene, 21247 (Gm21247), mRNA	<a href="https://genome.ucsc.edu/cgi-bin/hgc?hgsid=512004667_nnUUiRL0XAEIvOvMqv8RWMa25fHI&amp;c=chrY&amp;l=46729999&amp;r=47310000&amp;o=46757398&amp;t=46758082&amp;g=ensGene&amp;i=ENSMUST00000179950">https://genome.ucsc.edu/cgi-bin/hgc?hgsid=512004667_nnUUiRL0XAEIvOvMqv8RWMa25fHI&amp;c=chrY&amp;l=46729999&amp;r=47310000&amp;o=46757398&amp;t=46758082&amp;g=ensGene&amp;i=ENSMUST00000179950</a>
DQ874392	chrY:46,847,641-46,850,004	Mus musculus amplified spermatogenic transcript Y-encoded splice variant mRNA sequence	<a href="https://genome.ucsc.edu/cgi-bin/hgc?hgsid=512004667_nnUUiRL0XAEIvOvMqv8RWMa25fHI&amp;c=chrY&amp;l=46729999&amp;r=47310000&amp;o=46847640&amp;t=46850004&amp;g=mrna&amp;i=DQ874392">https://genome.ucsc.edu/cgi-bin/hgc?hgsid=512004667_nnUUiRL0XAEIvOvMqv8RWMa25fHI&amp;c=chrY&amp;l=46729999&amp;r=47310000&amp;o=46847640&amp;t=46850004&amp;g=mrna&amp;i=DQ874392</a>
AB340532	chrY:46,826,544-46,826,564	Mus musculus non-coding RNA, oocyte_clustered_small_RNA5733, complete sequence	<a href="https://genome.ucsc.edu/cgi-bin/hgc?hgsid=512004667_nnUUiRL0XAEIvOvMqv8RWMa25fHI&amp;c=chrY&amp;l=46729999&amp;r=47310000&amp;o=46826543&amp;t=46826564&amp;g=mrna&amp;i=AB340532">https://genome.ucsc.edu/cgi-bin/hgc?hgsid=512004667_nnUUiRL0XAEIvOvMqv8RWMa25fHI&amp;c=chrY&amp;l=46729999&amp;r=47310000&amp;o=46826543&amp;t=46826564&amp;g=mrna&amp;i=AB340532</a>
FJ386436	chrY:46,872,414-46,872,940	Y-linked testis-specific protein variant 2	<a href="https://genome.ucsc.edu/cgi-bin/hgc?hgsid=512004667_nnUUiRL0XAEIvOvMqv8RWMa25fHI&amp;c=chrY&amp;l=46729999&amp;r=47310000&amp;o=46872413&amp;t=46872940&amp;g=mrna&amp;i=FJ386436">https://genome.ucsc.edu/cgi-bin/hgc?hgsid=512004667_nnUUiRL0XAEIvOvMqv8RWMa25fHI&amp;c=chrY&amp;l=46729999&amp;r=47310000&amp;o=46872413&amp;t=46872940&amp;g=mrna&amp;i=FJ386436</a>

FJ386435	chrY:46,87 2,457- 46,872,940	Y-linked testis-specific protein variant 1	<a href="https://genome.ucsc.edu/cgi-bin/hgc?hgsid=512004667_nnUUiRL0XAEIvOvMqv8RWMa25fHI&amp;c=chrY&amp;l=46729999&amp;r=47310000&amp;o=46872456&amp;t=46872940&amp;g=mrna&amp;i=FJ386435">https://genome.ucsc.edu/cgi-bin/hgc?hgsid=512004667_nnUUiRL0XAEIvOvMqv8RWMa25fHI&amp;c=chrY&amp;l=46729999&amp;r=47310000&amp;o=46872456&amp;t=46872940&amp;g=mrna&amp;i=FJ386435</a>
AB349959	chrY:47,15 6,745- 47,156,769	Mus musculus non-coding RNA, oocyte_piRNA 775	<a href="https://genome.ucsc.edu/cgi-bin/hgc?hgsid=512004667_nnUUiRL0XAEIvOvMqv8RWMa25fHI&amp;c=chrY&amp;l=46729999&amp;r=47310000&amp;o=47156744&amp;t=47156769&amp;g=mrna&amp;i=AB349959">https://genome.ucsc.edu/cgi-bin/hgc?hgsid=512004667_nnUUiRL0XAEIvOvMqv8RWMa25fHI&amp;c=chrY&amp;l=46729999&amp;r=47310000&amp;o=47156744&amp;t=47156769&amp;g=mrna&amp;i=AB349959</a>
FJ386435	chrY:47,29 1,729- 47,292,212	Mus musculus strain C57BL/6J Y-linked testis-specific protein variant 1 mRNA, partial cds, alternatively spliced	<a href="https://genome.ucsc.edu/cgi-bin/hgc?hgsid=512004667_nnUUiRL0XAEIvOvMqv8RWMa25fHI&amp;c=chrY&amp;l=46729999&amp;r=47310000&amp;o=47291728&amp;t=4729212&amp;g=mrna&amp;i=FJ386435">https://genome.ucsc.edu/cgi-bin/hgc?hgsid=512004667_nnUUiRL0XAEIvOvMqv8RWMa25fHI&amp;c=chrY&amp;l=46729999&amp;r=47310000&amp;o=47291728&amp;t=4729212&amp;g=mrna&amp;i=FJ386435</a>
Srsy	chrY:17,93 5,719- 17,937,324	serine-rich secreted Y-linked protein	<a href="https://genome.ucsc.edu/cgi-bin/hgc?hgsid=512120325_Z7CxwoNZvwGKxJeSPJVicYKuSQLa&amp;c=chrY&amp;l=17935718&amp;r=17937324&amp;o=17935712&amp;t=17937330&amp;g=mrna&amp;i=EU052291">https://genome.ucsc.edu/cgi-bin/hgc?hgsid=512120325_Z7CxwoNZvwGKxJeSPJVicYKuSQLa&amp;c=chrY&amp;l=17935718&amp;r=17937324&amp;o=17935712&amp;t=17937330&amp;g=mrna&amp;i=EU052291</a>

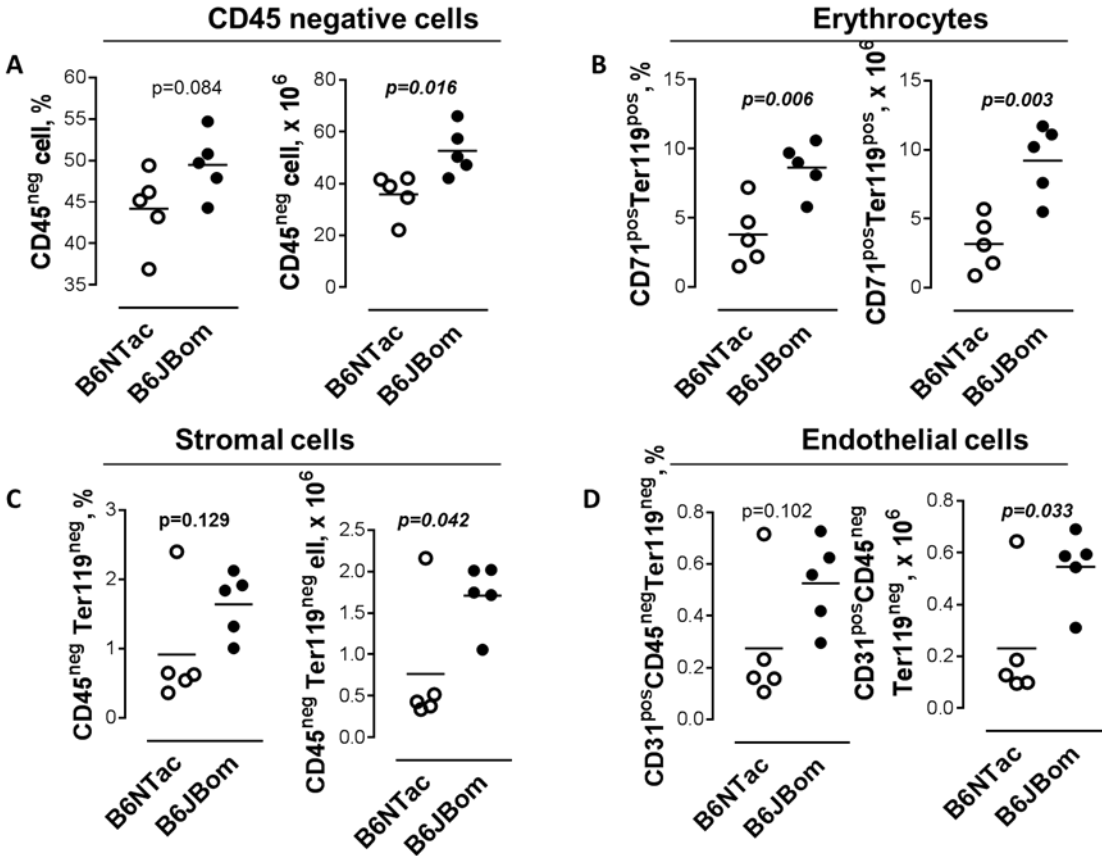


Fig S1. Characterization of changes within CD45<sup>neg</sup> non-immune subpopulations of B6JBom and B6NTac spleen cells **A)** Percentage and absolute values of total CD45<sup>neg</sup> population **B)** Percentage and absolute values of erythrocyte subpopulation **C)** Percentage and absolute values of the stromal cell subpopulation **D)** Percentage and absolute values of endothelial cell subpopulation.

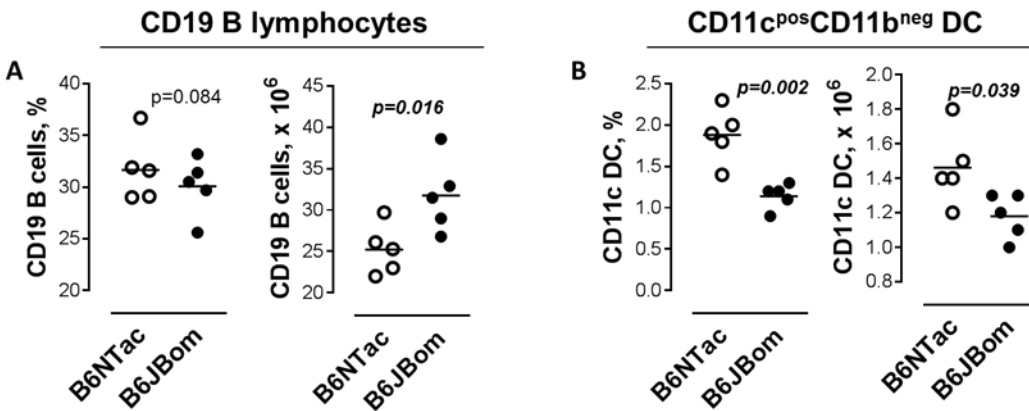


Fig S2. Characterization of changes within CD45<sup>pos</sup> immune subpopulations of B6JBom and B6NTac spleen cells **A)** Percentage and absolute values of CD19 B lymphocytes **B)** Percentage and absolute values of CD11c<sup>pos</sup> CD11b<sup>neg</sup> dendritic cells.

Table S5. Subpopulations of CD45 non-immune and CD45 immune cells in male mouse spleen of B6NTac and B6JBom

% Cell Population	B6NTac			B6JBom			P value
	Mean	SEM	n	Mean	SEM	n	
Spleen weight, mg	71.20	2.97	5	88.96	4.91	5	<b>0.015</b>
Viable cells, %	90.64	0.57	5	90.50	0.50	5	0.823
CD45 <sup>neg</sup> cells, %	44.18	2.08	5	49.48	1.71	5	0.084
Erythrocytes (CD45-, CD71-, Ter119+), %	39.38	1.18	5	39.12	1.05	5	0.873
Mature erythrocytes (CD45-, CD71+, Ter119+), %	3.80	1.01	5	8.64	0.82	5	<b>0.006</b>
Stromal cells (CD45-, CD71-, Ter119-) %	0.92	0.37	5	1.64	0.21	5	0.129
Endothelial cells (CD45-, CD71-, Ter119-, CD31+, Sca1-), %	0.27	0.11	5	0.53	0.08	5	0.102
Fibroblasts (CD45-, CD71-, Ter119-, CD31+, Sca1+), %	0.17	0.15	5	0.36	0.05	5	0.269
Mesenchymal Stem cells (CD45-, CD71-, Ter119-, CD31-, Sca1+), %	0.11	0.04	5	0.18	0.03	5	0.158
CD45 <sup>pos</sup> immune cells, %	55.44	2.06	5	50.06	1.69	5	0.078
T cells (CD45+, CD3+), %	11.06	0.52	5	8.50	0.36	5	<b>0.004</b>
T helper cells (CD45+, CD3+, CD4+), %	6.60	0.38	5	5.30	0.35	5	<b>0.037</b>
Cytotoxic T cells (CD45+, CD3+, CD8+), %	3.34	0.16	5	2.24	0.15	5	<b>0.001</b>
B lymphocytes (CD45+, CD19+), %	31.66	1.40	5	30.08	1.26	5	0.425
Natural killer cells (CD45+, NK1.1+), %	3.50	0.14	5	2.46	0.18	5	<b>0.002</b>
Myeloid cells (CD45+, CD11b+, CD11c+, %	2.54	0.11	5	2.30	0.27	5	0.433
Myeloid phagocytic cells (CD45+, CD11c+, MHCII/F4/80+), %	1.88	0.15	5	1.14	0.07	5	<b>0.002</b>
Neutrophils (CD45+, CD11b+, Gr-1+), %	0.90	0.12	5	0.87	0.18	5	0.878
Macrophages (CD45+, CD11b+, MHCII/F4/80+, GR1-), %	0.41	0.05	5	0.23	0.04	5	<b>0.018</b>
Total Number of Cells							
Total cell, x 10 <sup>6</sup>	80.40	5.78	5	106.00	6.40	5	<b>0.018</b>
CD45-cells, x 10 <sup>6</sup>	35.86	3.68	5	52.60	4.17	5	<b>0.016</b>
Erythrocytes (CD45-, CD71-, Ter119+) erythrocytes, x 10 <sup>6</sup>	31.88	2.91	5	41.56	3.12	5	0.053
Mature erythrocytes (CD45-, CD71+, Ter119+), x 10 <sup>6</sup>	3.18	0.86	5	9.22	1.16	5	<b>0.003</b>
Stromal cells (CD45-, CD71-, Ter119-), x 10 <sup>6</sup>	0.76	0.35	5	1.71	0.18	5	<b>0.042</b>
Endothelial cells (CD45-, CD71-, Ter119-, CD31+, Sca1-), x 10 <sup>6</sup>	0.23	0.10	5	0.55	0.06	5	<b>0.033</b>
Fibroblasts (CD45-, CD71-, Ter119-, CD31+, Sca1+), x 10 <sup>6</sup>	0.15	0.14	5	0.37	0.04	5	0.158

Mesenchymal stem cells (CD45-, CD71-, Ter119-, CD31-, Sca1+), x 10 <sup>6</sup>	0.09	0.04	5	0.19	0.02	5	0.051
CD45 <sup>pos</sup> immune cells, x 10 <sup>6</sup>	44.24	2.44	5	52.90	2.95	5	0.053
T cells (CD45+, CD3+), x 10 <sup>6</sup>	8.82	0.65	5	8.92	0.36	5	0.896
T helper cells (CD45+, CD3+, CD4+), x 10 <sup>6</sup>	5.26	0.41	5	5.56	0.31	5	0.578
Cytotoxic T cells (CD45+, CD3+, CD8+), x 10 <sup>6</sup>	2.68	0.19	5	2.34	0.14	5	0.185
B cells (CD45+, CD19+), x 10 <sup>6</sup>	25.22	1.34	5	31.76	2.00	5	<b>0.027</b>
Natural killer cells (CD45+, NK1.1+), x 10 <sup>6</sup>	2.82	0.22	5	2.62	0.23	5	0.544
Myeloid cells (CD45+, CD11b+, CD11c+, x 10 <sup>6</sup>	2.04	0.16	5	2.40	0.26	5	0.268
Myeloid phagocytic cells (CD45+, CD11c+, MHCII/F4/80)+, x 10 <sup>6</sup>	1.46	0.10	5	1.18	0.06	5	<b>0.039</b>
Neutrophils (CD45+, Gr-1+, CD11b+), x 10 <sup>6</sup>	0.74	0.12	5	0.92	0.18	5	0.421
Macrophages (CD45+, F4/80+, Gr-1-, CD11b+, x 10 <sup>6</sup>	0.30	0.03	5	0.24	0.05	5	0.346

Table S6. Immune-cell subpopulations of male mouse bone marrow in B6NTac and B6JBom

% Cell Population	B6NTac			B6JBom			P value‡
	Mean	SEM	N	Mean	SEM	N	
Viable cells, %	90.6	0.4	5	90.5	0.4	5	0.807
CD45 <sup>pos</sup> immune cells, %	54.8	2.3	5	48.4	2.9	5	0.117
CD11b <sup>pos</sup> myeloid cells, %	35.0	2.6	5	29.1	2.0	5	0.119
Ly6G <sup>pos</sup> Ly6C <sup>low</sup> CD11b <sup>pos</sup> granulocytes, %	23.2	1.9	5	18.9	1.5	5	0.113
Ly6G <sup>neg</sup> Ly6C <sup>neg</sup> CD11b <sup>pos</sup> monocytes, %	10.7	0.9	5	8.9	0.6	5	0.126
F4/80 <sup>pos</sup> CD11b <sup>pos</sup> Ly6G <sup>neg</sup> macrophages&APC, %	0.86	0.1	5	0.88	0.1	5	0.852
CD19 <sup>pos</sup> B lymphocytes, %	11.0	0.3	5	11.0	0.5	5	0.973
lin <sup>neg</sup> CD45 <sup>pos</sup> hematopoietic stem/progenitor cells,* %	2.2	0.1	5	2.0	0.1	5	0.176
<hr/>							
Total number of viable cells,† x 10 <sup>6</sup>	48.2	3.7	5	45.2	3.6	5	0.579
CD45 <sup>pos</sup> immune cells, x 10 <sup>6</sup>	26.4	2.1	5	21.5	1.3	5	0.087
CD11b <sup>pos</sup> myeloid cells, x 10 <sup>6</sup>	16.7	1.7	5	12.9	0.8	5	0.076
Ly6G <sup>pos</sup> Ly6C <sup>low</sup> CD11b <sup>pos</sup> granulocytes, x 10 <sup>6</sup>	11.1	1.1	5	8.4	0.5	5	0.051
Ly6G <sup>neg</sup> Ly6C <sup>neg</sup> CD11b <sup>pos</sup> monocytes, x 10 <sup>6</sup>	5.2	0.6	5	4.0	0.3	5	0.12
F4/80 <sup>pos</sup> CD11b <sup>pos</sup> Ly6G <sup>neg</sup> macrophages&APC, x 10 <sup>6</sup>	0.41	0.0	5	0.4	0.0	5	0.885
CD19 <sup>pos</sup> B lymphocytes, x 10 <sup>6</sup>	5.3	0.5	5	4.9	0.3	5	0.518
lin <sup>neg</sup> CD45 <sup>pos</sup> hematopoietic stem/progenitor cells, x 10 <sup>6</sup>	1.1	0.1	5	0.9	0.1	5	0.115

\* - percent of HPC was found within CD45<sup>pos</sup> cells after gating out CD11b, CD19, Ly6G, Ly6C and F4/80 positive populations.

† - total number of cells from four bones (left and right legs)

‡ - unpaired  $t$  test