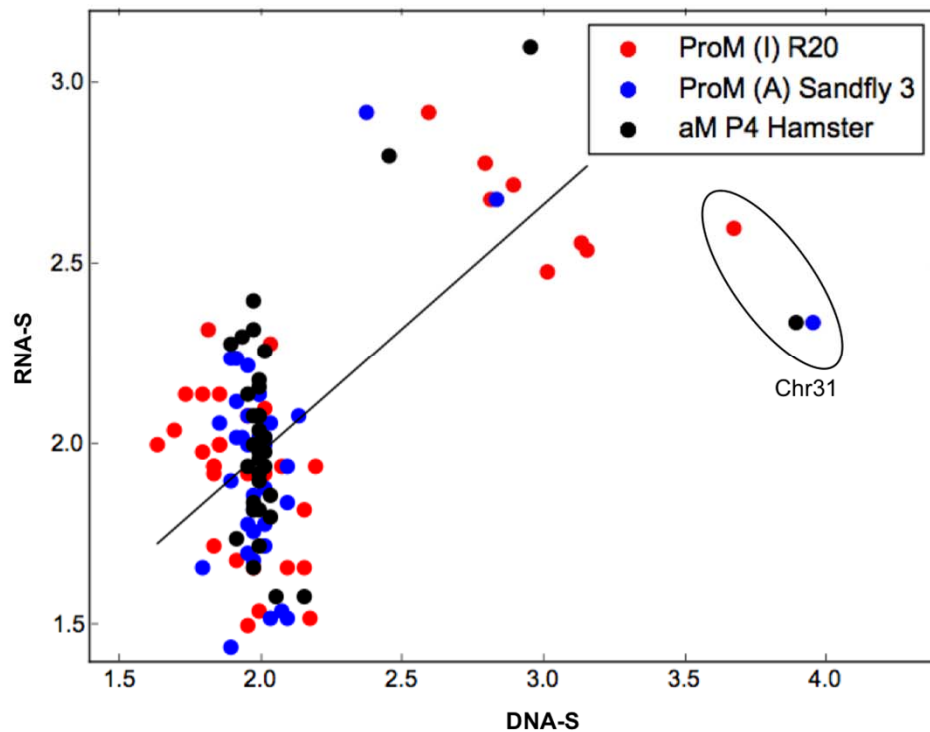


S1A



S1B

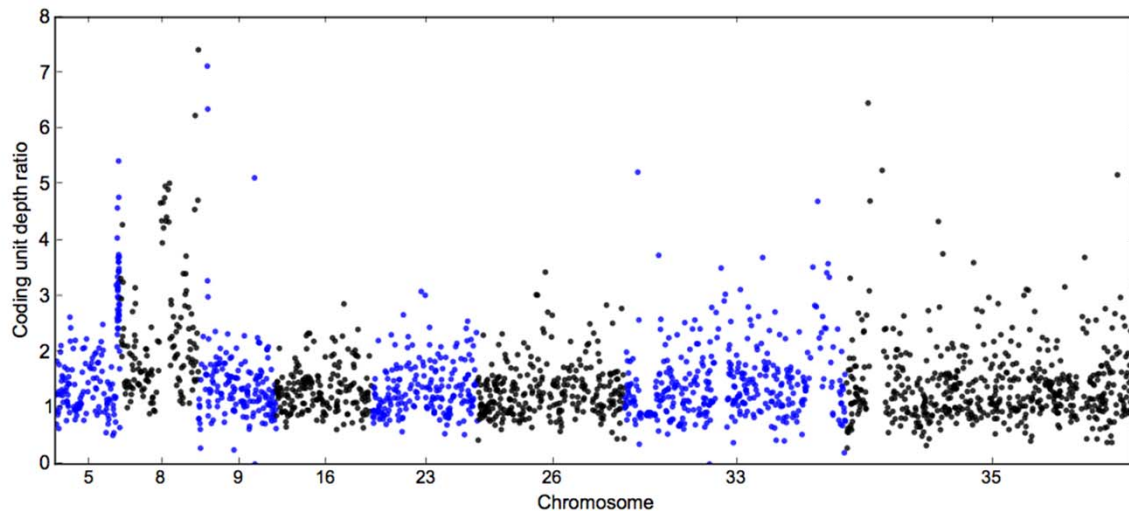


Figure S1. A. Correlation between *S* and *RNA-S* during adaptation to different life stages/environments The correlation coefficient between *S* and *RNA-S* in promastigotes (in vitro and from sand fly) and amastigotes was $r = 0.65$ (p -value $7.7 \cdot 10^{-12}$). Chromosome 31 some values were excluded for the correlation calculation but were included in the scattering plot to illustrate their behaviour.

B. Manhattan plot for Individual gene expression in promastigotes showing variable aneuploidy. Samples considered here are: ProM (I) 20, ProM (P) Sandfly 3, Prom (A) R3, ProM (A) R10. These samples represent the same life stage, but they differ in some of chromosomes: 5, 8, 9, 16, 23, 26, 33 and 35. RNA depth ratios between trisomic and disomic groups in these chromosomes are shown: the x-axis represents each coding unit along chromosomes and the y-axis the average RNA depth ratios. Colours of dots were alternated for each chromosome.