

Supplemental Table and Figures

Supplemental Table 1. SNP-Based Analysis Minnesota Burn Unit Outbreak

	C2012025220	C2012025221	C2012025222	C2012025223	C2012025225	C2012025226	C2012025228	C2012026544	C2012026546	C2012026547	C2012026548	C2012026549	C2012027345	C2012027346	C2012027348	C2012027350	USA300	USA500
C2012025220	0	12	11	24	17	16	15	11	154	8	0	5	20	24	22	4	77	2397
C2012025221	12	0	3	16	5	5	2	3	154	12	12	14	16	16	14	11	82	2397
C2012025222	11	3	0	15	4	4	1	2	153	12	12	13	16	15	13	10	81	2396
C2012025223	24	16	15	0	15	15	14	15	158	18	18	20	0	4	2	18	86	2401
C2012025225	17	5	4	15	0	0	3	4	153	11	11	13	15	15	13	11	81	2396
C2012025226	16	5	4	15	0	0	3	4	152	11	11	13	15	15	13	11	80	2395
C2012025228	15	2	1	14	3	3	0	1	146	10	10	10	14	14	12	10	74	2388
C2012026544	11	3	2	15	4	4	1	0	153	11	11	13	15	15	13	10	81	2396
C2012026546	154	154	153	158	153	152	146	153	0	155	154	149	159	159	158	135	104	2416
C2012026547	8	12	12	18	11	11	10	11	155	0	2	3	18	18	16	5	83	2398
C2012026548	0	12	12	18	11	11	10	11	154	2	0	4	18	18	16	4	83	2397
C2012026549	5	14	13	20	13	13	10	13	149	3	4	0	20	18	18	3	76	2391
C2012027345	20	16	16	0	15	15	14	15	159	18	18	20	0	4	2	17	87	2402
C2012027346	24	16	15	4	15	15	14	15	159	18	18	18	4	0	2	18	83	2402
C2012027348	22	14	13	2	13	13	12	13	158	16	16	18	2	2	0	16	86	2401
C2012027350	4	11	10	18	11	11	10	10	135	5	4	3	17	18	16	0	62	2378
USA300	77	82	81	86	81	80	74	81	104	83	83	76	87	83	86	62	0	2335
USA500	2397	2397	2396	2401	2396	2395	2388	2396	2416	2398	2397	2391	2402	2402	2401	2378	2335	0

Green = 'Indistinguishable'; Yellow = 'Closely Related'; Orange = 'Possibly Closely Related'; Red = 'Different'

Supplemental Table 2. SNP-Based Analysis of Post-Surgical Unit Outbreak

	C2014000754	C2014000755	C2014000756	C2014000759	C2014006915	C2014006916	C2014006917	C2014006918	C2014006919	C2014006920	C2014006921	C2014006943	USA100	USA300	USA500	USA800
C2014000754	0	43	46	23	2014	18214	1298	18252	2354	1816	18234	18231	1183	18156	19244	1494
C2014000755	43	0	29	37	1953	17200	1240	17238	2296	1757	17218	17215	1107	17144	18254	1436
C2014000756	46	29	0	39	2074	19131	1355	19167	2415	1864	19152	19149	1254	19074	20120	1497
C2014000759	23	37	39	0	1985	17585	1252	17621	2352	1798	17606	17603	1141	17527	18639	1534
C2014006915	2014	1953	2074	1985	0	18260	938	18295	29	1126	18275	18274	1091	18203	18630	2312
C2014006916	18214	17200	19131	17585	18260	0	10528	162	20753	19056	129	133	14673	69	2378	20371
C2014006917	1298	1240	1355	1252	938	10528	0	10568	1183	42	10543	10542	462	10471	11502	1708
C2014006918	18252	17238	19167	17621	18295	162	10568	0	20788	19093	183	187	14713	121	2417	20406
C2014006919	2354	2296	2415	2352	29	20753	1183	20788	0	1303	20770	20769	1349	20697	21001	2418
C2014006920	1816	1757	1864	1798	1126	19056	42	19093	1303	0	19074	19073	819	18999	19626	1998
C2014006921	18234	17218	19152	17606	18275	129	10543	183	20770	19074	0	3	14690	83	2398	20392
C2014006943	18231	17215	19149	17603	18274	133	10542	187	20769	19073	3	0	14687	83	2403	20389
USA100	1183	1107	1254	1141	1091	14673	462	14713	1349	819	14690	14687	0	14613	15833	1367
USA300	18156	17144	19074	17527	18203	69	10471	121	20697	18999	83	83	14613	0	2335	20314
USA500	19244	18254	20120	18639	18630	2378	11502	2417	21001	19626	2398	2403	15833	2335	0	21448
USA800	1494	1436	1497	1534	2312	20371	1708	20406	2418	1998	20392	20389	1367	20314	21448	0

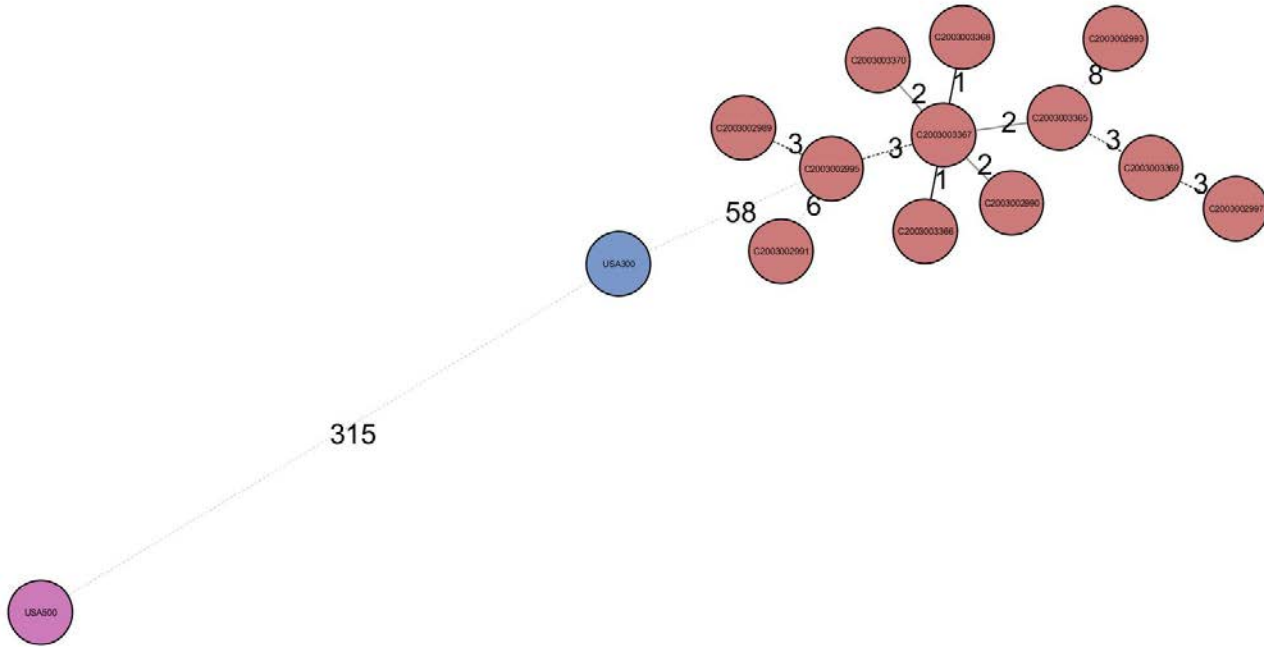
Green = 'Indistinguishable'; Yellow = 'Closely Related'; Orange = 'Possibly Closely Related'; Pink = 'Possibly Different' Red = 'Different'

Supplemental Table 3. SNP-Based Analysis of Connecticut Football Team Outbreak

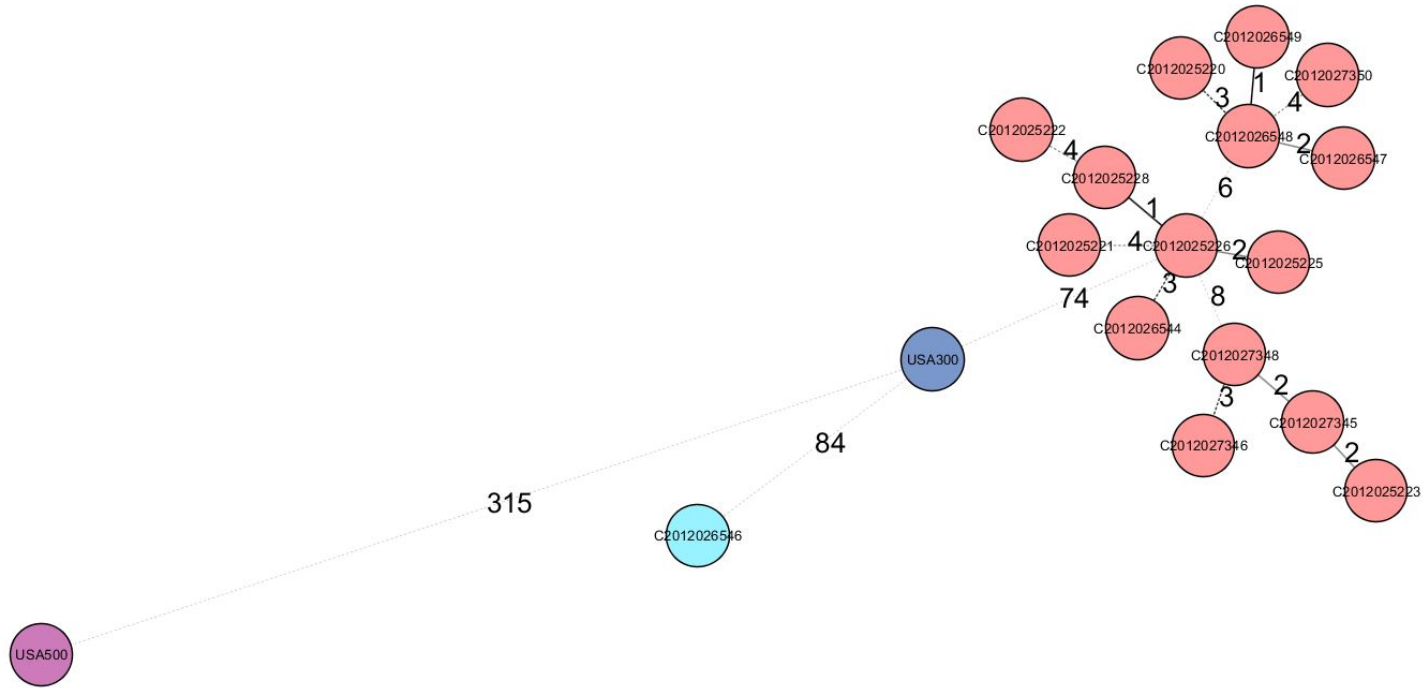
	C2003002989	C2003002990	C2003002991	C2003002993	C2003002995	C2003002997	C2003003365	C2003003366	C2003003367	C2003003368	C2003003369	C2003003370	USA300	USA500
C2003002989	0	4	3	6	4	6	10	5	4	4	4	4	69	2368
C2003002990	4	0	5	2	4	2	6	1	0	0	0	0	66	2365
C2003002991	3	5	0	8	5	7	5	6	5	5	5	5	70	2370
C2003002993	6	2	8	0	6	4	2	3	2	2	3	2	74	2372
C2003002995	4	4	5	6	0	6	10	5	4	4	4	4	70	2369
C2003002997	6	2	7	4	6	0	2	3	2	2	2	2	72	2371
C2003003365	10	6	5	2	10	2	0	7	0	0	0	6	64	2369
C2003003366	5	1	6	3	5	3	7	0	1	1	1	1	68	2365
C2003003367	4	0	5	2	4	2	0	1	0	0	0	0	63	2365
C2003003368	4	0	5	2	4	2	0	1	0	0	0	0	68	2367
C2003003369	4	0	5	3	4	2	0	1	0	0	0	0	62	2361
C2003003370	4	0	5	2	4	2	6	1	0	0	0	0	71	2369
USA300	69	66	70	74	70	72	64	68	63	68	62	71	0	2335
USA500	2368	2365	2370	2372	2369	2371	2369	2365	2365	2367	2361	2369	2335	0

Green = 'Indistinguishable'; Yellow = 'Closely Related'; Orange = 'Possibly Closely Related'; Red = 'Different'

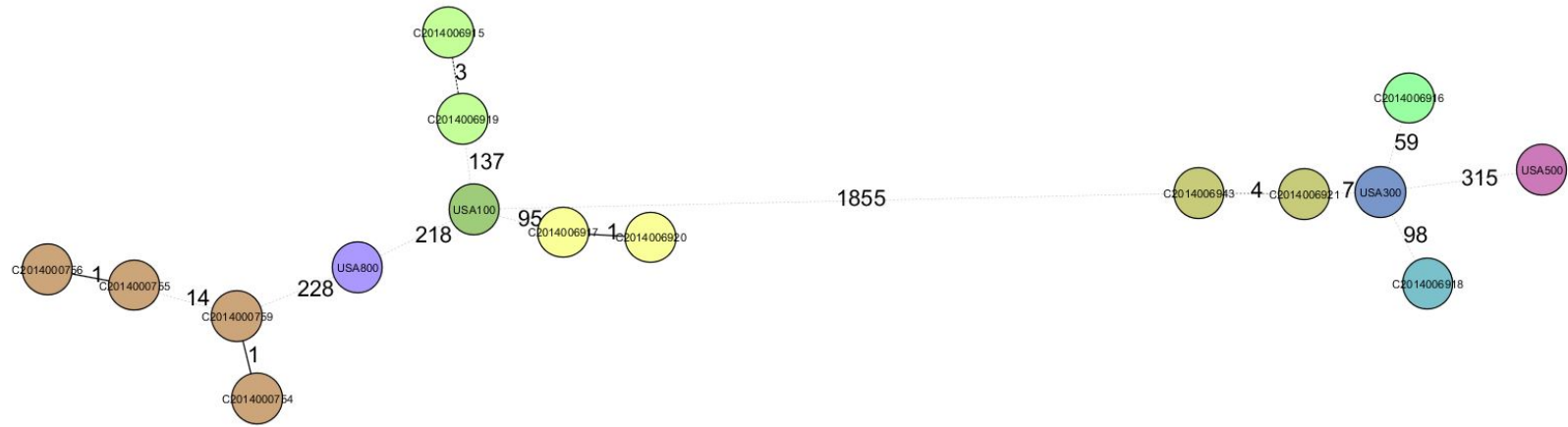
Supplemental Figure 1. Connecticut Football Team Outbreak - Long Mate Pair and Paired-End Assembly Minimum Spanning Tree



Supplemental Figure 2. Minnesota Burn Unit Outbreak - Long Mate Pair and Paired-End Assembly Minimum Spanning Tree



Supplemental Figure 3. Post-Surgical Unit Outbreak - Long Mate Pair and Paired-End Assembly Minimum Spanning Tree



Supplemental Figure 6. Post-Surgical Unit Outbreak - Paired-End Assembly Minimum Spanning Tree

