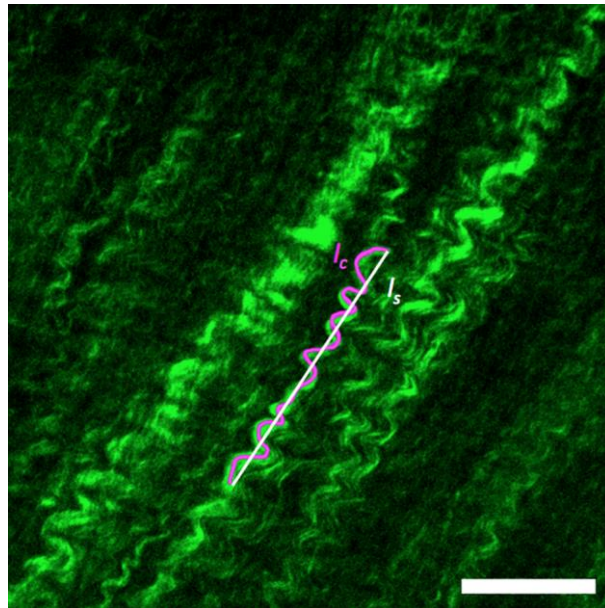


Supplemental Figure – Knothe Tate et al.



**Figure S1. Representative image demonstrating definition of measured parameters for collagen crimp measurement.** The curved length of collagen fiber bundles ( $l_c$ ) and straight line ( $l_s$ ) connecting the ends of measured fiber bundle were measured with semi-automated NeuroJ plugin (ImageJ2), giving the degree of crimp in collagen filaments  $C = (l_c - l_s) / l_s \times 100\%$ .