

Figure S1. Patient retention analysis (Kaplan Meier analysis; CZP ITT and CZP monotherapy sub-populations). Analyses were performed for: (a) Time to withdrawal for any reason; (b) Time to withdrawal due to lack of efficacy (LOE), adverse event (AE), not consenting to enter the OLE or addition of MTX for monotherapy patients; and time to withdrawal due to (c) LOE or addition of MTX for monotherapy patients or (d) AE alone

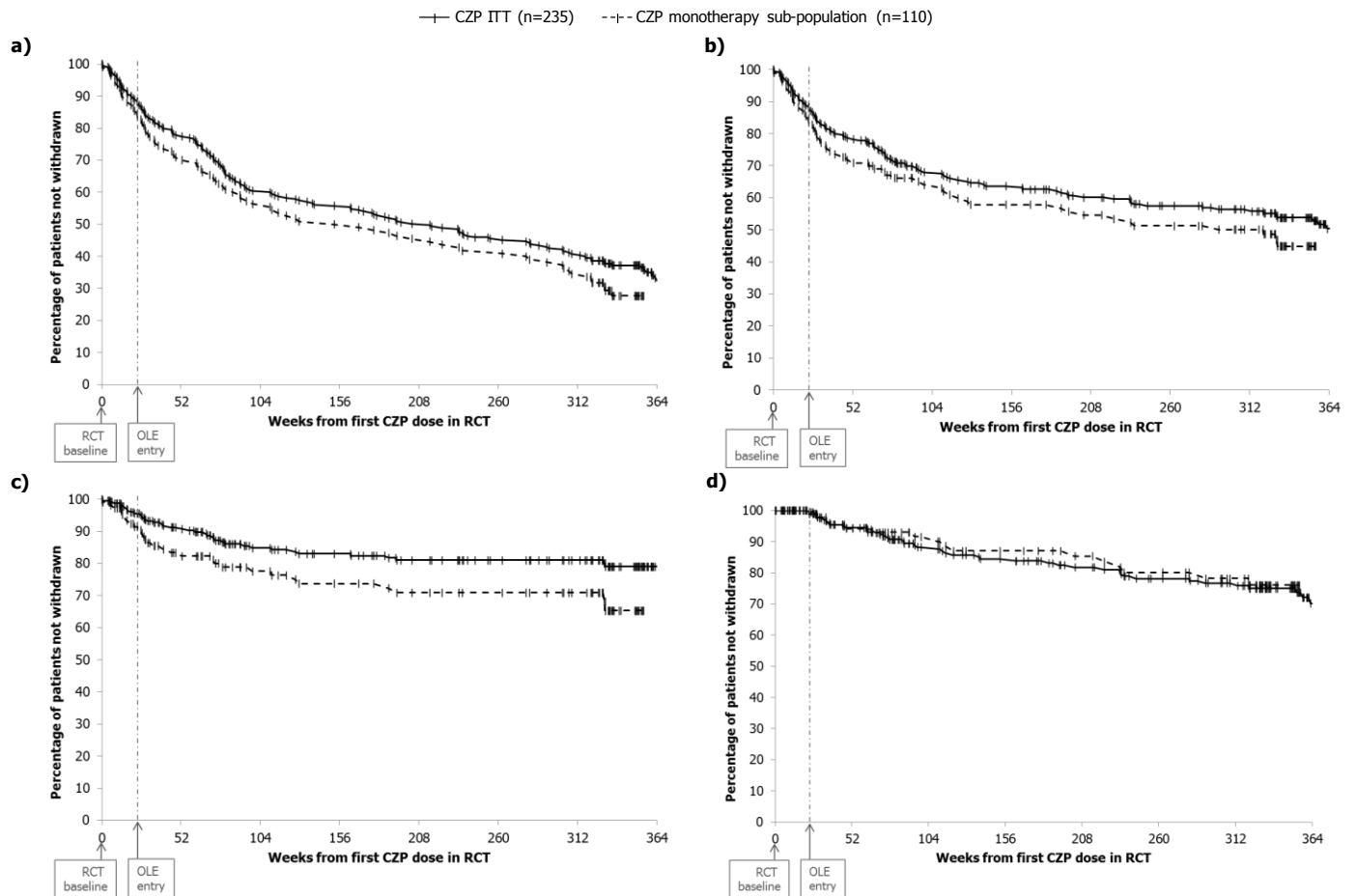


Figure S2: Mean DAS28-3(CRP) in CZP ITT patients (N=235), and the CZP monotherapy (n=110) and CZP+MTX (n=125) sub-populations (absolute values, LOCF)

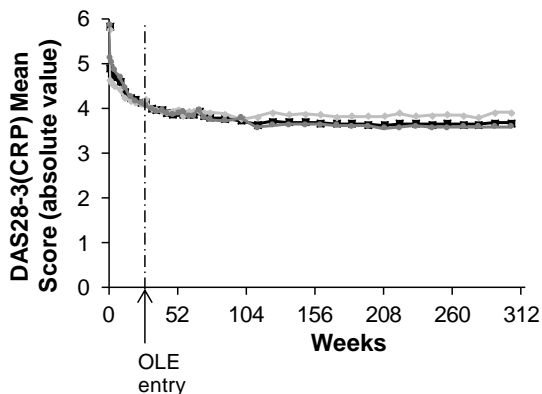


Table S1: Summary of adverse events (AEs) in all patients treated with CZP in the RCTs or OLE over time (safety population)

Time of occurrence (months)	0-<3	≥3-<6	≥6-<12	≥12-<18	≥18-<24	≥24-<36	≥36-<48	≥48-<60	≥60
Event	Event Rate per 100 PY								
Primary System Organ Class									
High Level Term									
Preferred Term	N=427	N=415	N=393	N=358	N=314	N=285	N=262	N=238	N=218
Any AE^a	690.4	462.6	423.6	411.6	395.5	375.2	357.8	418.7	360.7
Infections and infestations	141.2	92.1	99.2	114.4	114.4	110.4	98.5	138.5	108.7
Tuberculosis	0	0	0	0	0.7	0	0.8	0	0
Candida infection (including topical)	2.9	0	0.6	0	0.7	0.4	2.4	2.2	0.6
Herpes viral infections	7.7	4.0	9.8	5.5	4.8	4.9	4.9	7.2	3.9
Herpes simplex	5.8	2.0	7.1	3.6	2.7	3.4	4.5	5.4	2.5
Herpes zoster	1.9	2.0	2.7	1.8	2.0	1.5	0.4	1.8	1.4
Injection and infusion site reactions	26.1	9.0	3.8	1.2	1.4	1.5	2.0	0.5	2.2
Injection site reaction	8.7	2.0	0.6	0.6	0	0.8	1.2	0	0.3
Injection site pain	1.9	3.0	0	0	0.7	0	0	0	0.8
Cardiac disorders	6.8	1.0	7.1	7.3	8.2	8.2	1.2	4.0	6.6
Neoplasms ^b	1.9	2.0	4.4	4.8	4.1	2.6	2.8	3.6	5.8

^a43.6% of AEs for the safety population were classed as severe in intensity; ^bNeoplasms could be benign, malignant or unspecified (includes cysts and polyps).

Safety population included all patients who received CZP in either the RCT or OLE. MedDRA version 9.0.