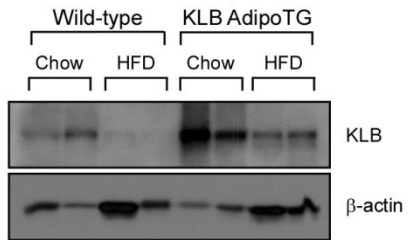
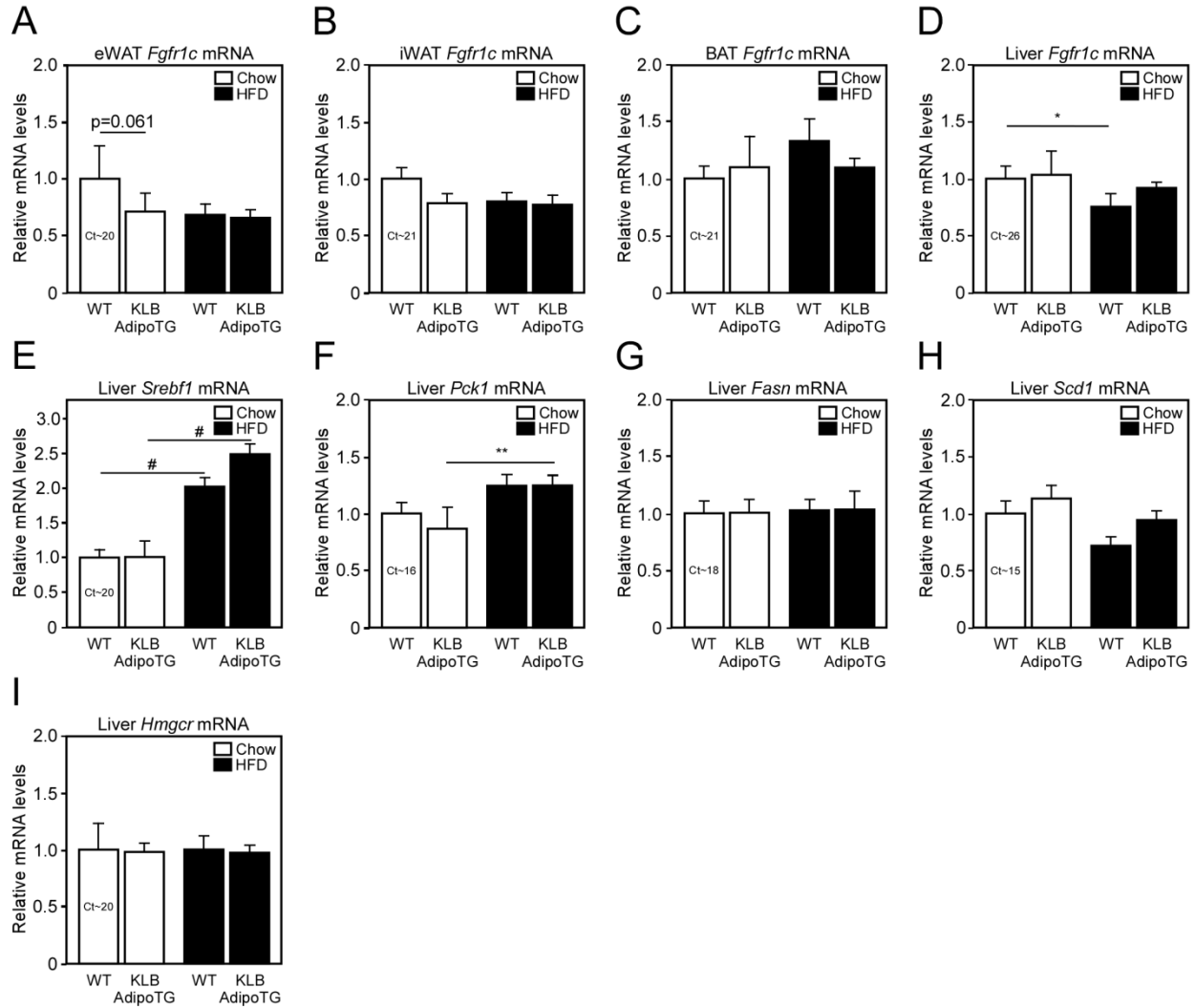


SUPPLEMENTARY FIGURES AND TABLE



Supplementary Figure 1. Western blot analysis of KLB protein expression in epididymal white adipose tissue of wild-type (WT) and KLB adipose-specific transgenic mice (KLB AdipoTG) fed chow or HFD for 14 weeks.



Supplementary Figure 2. Gene expression in wild-type (WT) and KLB adipose-specific transgenic mice (KLB AdipoTG) fed chow or HFD for 14 weeks as determined by QPCR. *Fgfr1c* mRNA expression in (A) epididymal white adipose tissue (eWAT), (B) inguinal white adipose tissue (iWAT), (C) interscapular brown adipose tissue, and (D) liver. Hepatic gene expression for (E) *Srebf1*, (F) *Pck1*, (G) *Fasn*, (H) *Scd1*, and (I) *Hmgcr*. Values are mean \pm SEM. (*, $P < 0.05$; **, $P < 0.01$; ***, $P < 0.005$; and #, $P < 0.001$ compared to WT).

Supplementary Table 1 – Plasma parameters of KLB AdipoTG mice. Plasma parameters of WT and KLB AdipoTG littermates on chow and high fat diet for 14 weeks. Data are presented as mean \pm SEM. (*, $P < 0.05$).

	Chow Diet		High Fat Diet	
	WT	KLB AdipoTG	WT	KLB AdipoTG
n	9	8	10	9
Food Intake (g/day)	3.20 \pm 0.10	3.26 \pm 0.11	2.89 \pm 0.09	2.91 \pm 0.05
Glucose (mg/dL)	171.27 \pm 6.86	179.33 \pm 8.84	215.93 \pm 13.40	209.60 \pm 10.82
Triglycerides (mg/dL)	102.14 \pm 7.16	120.41 \pm 14.43	94.05 \pm 5.12	114.25 \pm 6.83 *
NEFAs (mmol/L)	0.67 \pm 0.04	0.66 \pm 0.0	0.47 \pm 0.04	0.52 \pm 0.02
Cholesterol (mg/dL)	128.86 \pm 4.59	129.24 \pm 4.69	231.58 \pm 11.50	224.90 \pm 11.29
Total Ketones	64.11 \pm 10.85	45.88 \pm 4.19	79.10 \pm 7.03	61.28 \pm 3.86 *