

Supplementary data belonging to manuscript:

Molecular epidemiology in relation to azithromycin resistance in *Neisseria gonorrhoeae* isolates from Amsterdam, the Netherlands, between 2008 and 2015 – a case-control study

Carolien M Wind,^{a,b} Sylvia M Bruisten,^c Maarten F Schim van der Loeff,^{d,e} Mirjam Dierdorp,^c Henry JC de Vries,^{a,b,e} Alje P van Dam^{c,f,#}

^a STI Outpatient Clinic, Department of Infectious Diseases, Public Health Service Amsterdam, Amsterdam, the Netherlands

^b Department of Dermatology, Academic Medical Center, University of Amsterdam, Amsterdam, the Netherlands

^c Public Health Laboratory, Public Health Service Amsterdam, Amsterdam, the Netherlands

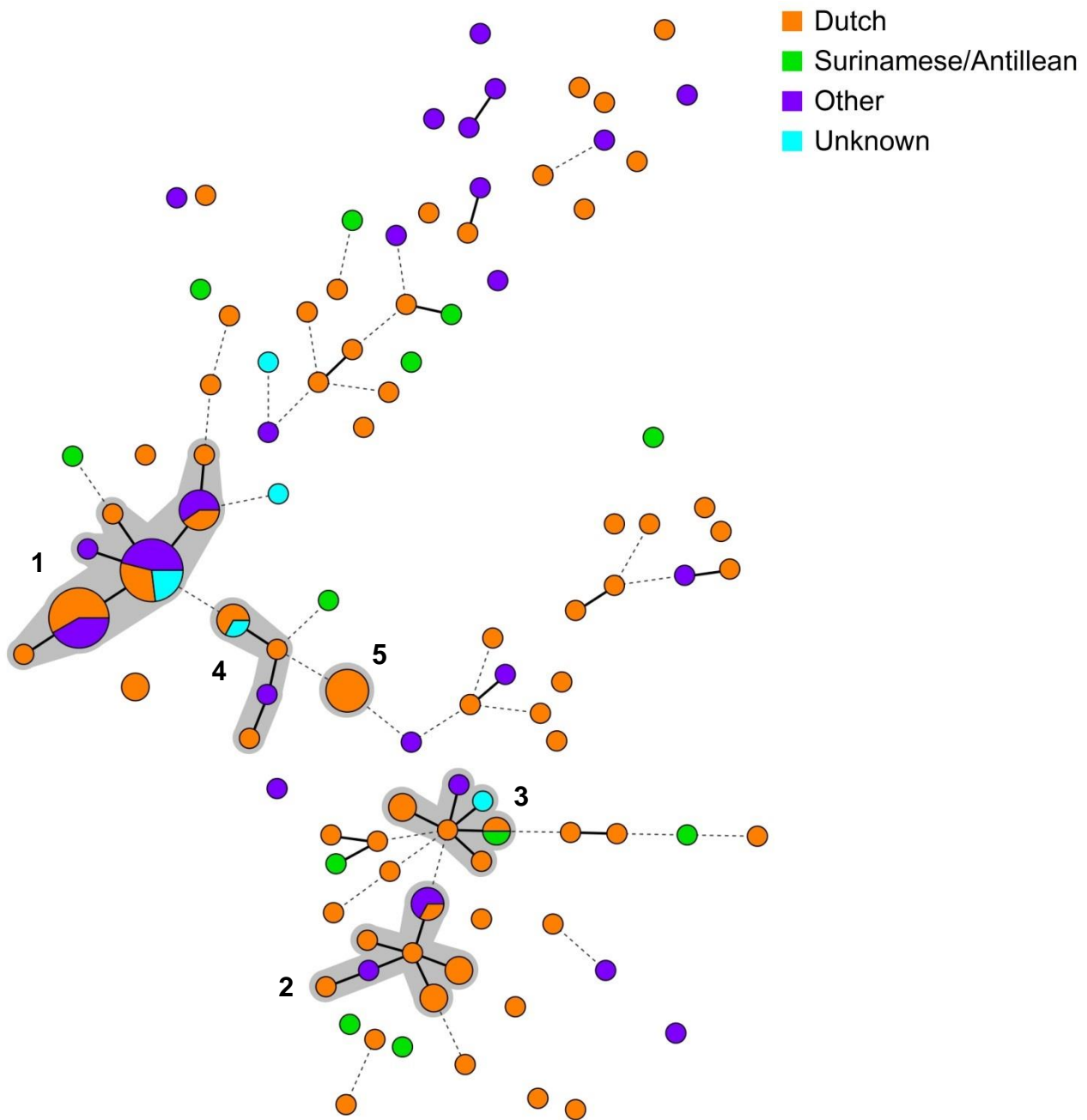
^d Department of Infectious Diseases, Public Health Service Amsterdam, Amsterdam, the Netherlands

^e Center for Infection and Immunity Amsterdam, Academic Medical Center, University of Amsterdam, Amsterdam, the Netherlands

^f Department of Medical Microbiology, OLVG General Hospital, Amsterdam, the Netherlands

Supplementary Figures: 1

Supplementary Tables: 1



SUPPLEMENTARY FIG 1 Minimum spanning tree of 143 *N. gonorrhoeae* isolates based on NG-MLVA, by ethnic origin

Each circle represents a different NG-MLVA type, the size of the circle represents the number of isolates, a solid line represents a difference of one locus, a dashed line represents a difference of two loci. A cluster (grey area) was assigned for NG-MLVA types that differed on one locus and contained at least five isolates. NG-MLVA, *Neisseria gonorrhoeae* multilocus variable-number tandem repeat analysis.

SUPPLEMENTARY TABLE 1 NG-MAST sequence types of 143 *N. gonorrhoeae* isolates of patients visiting the STI Outpatient Clinic Amsterdam, the Netherlands from January 2008 through September 2015, by susceptibility to azithromycin^a

NG-MAST ST n = 65	Total n = 143	Resistant n = 69	Susceptible n = 74
2	1	0	1
21	3	2	1
51	2	0	2
205	1	1	0
210	1	0	1
225	1	0	1
359	8	7	1
436	1	0	1
951	1	0	1
1407	6	1	5
1419	1	0	1
1478	1	1	0
1582	1	0	1
1666	1	0	1
2210	2	2	0
2322	2	2	0
2400	11	1	10
2487	1	0	1
2992	21	18	3
3003	2	0	2
3128	1	1	0
3307	2	0	2
3629	1	0	1
3806	1	1	0
3811	1	0	1
4198	1	1	0
4234	1	0	1
4249	1	0	1
4544	2	0	2
4589	1	0	1
4751	1	0	1
4914	1	0	1
4995	1	1	0
5031	1	0	1
5108	17	17	0
5475	1	0	1
5520	2	0	2
5533	3	3	0
5553	1	1	0
5793	1	0	1
6327	3	1	2
7574	1	0	1
8919	1	0	1
10257	1	0	1
10567	1	1	0
11072	1	0	1

11461	1	0	1
11594	1	1	0
12212	1	0	1
13155	1	0	1
14338	1	0	1
14339	1	0	1
14340	1	0	1
14345	1	0	1
14346	1	0	1
14347	1	0	1
14348	1	0	1
14349	1	0	1
14350	1	0	1
14354	1	0	1
14361	1	1	0
14369	1	1	0
14370	1	1	0
14375	2	2	0
14377	1	0	1
14379	1	1	0
14391	1	0	1
Missing	4	0	4

^a Data are presented as number of isolates.

NG-MAST, *N. gonorrhoeae* multiantigen sequence type; ST, sequence type; STI, sexually transmitted infection.