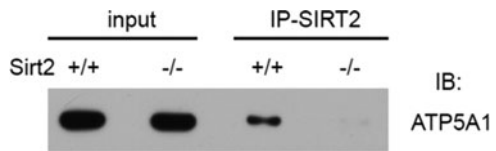


Supplementary Data



SUPPLEMENTARY FIG. S1. SIRT2 interacts with mitochondrial protein. Lysates from Cortex tissues were harvested, subsequently IPed with anti-SIRT2 antibody, and blotted with ATP5A1. IP, immunoprecipitation; SIRT2, NAD-dependent protein deacetylase sirtuin-2.