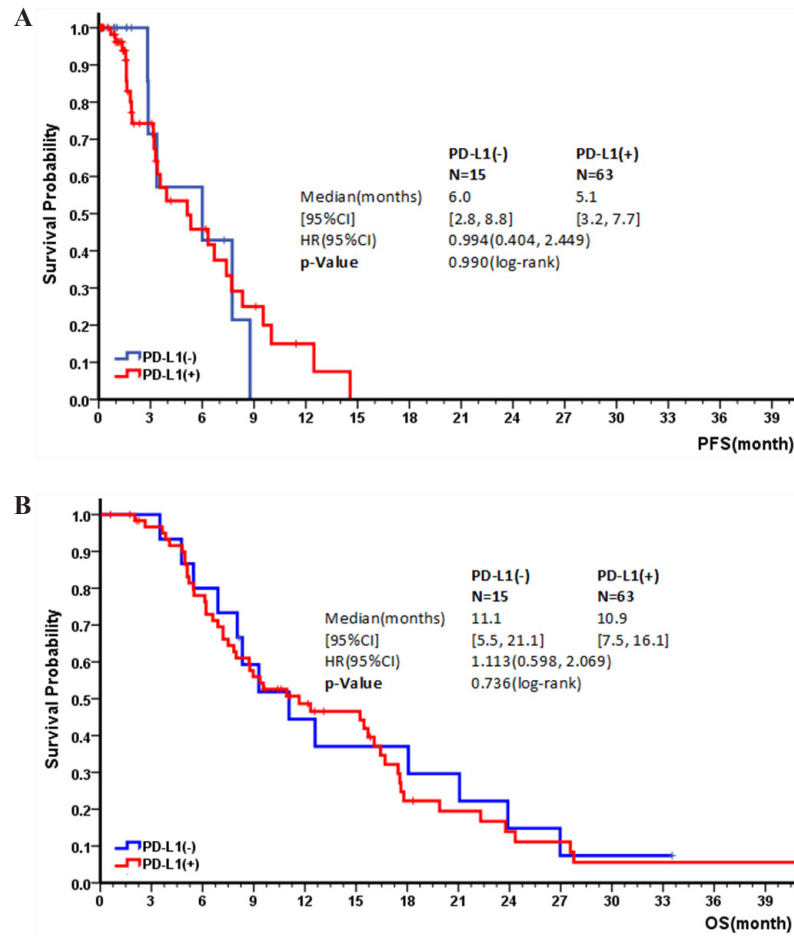
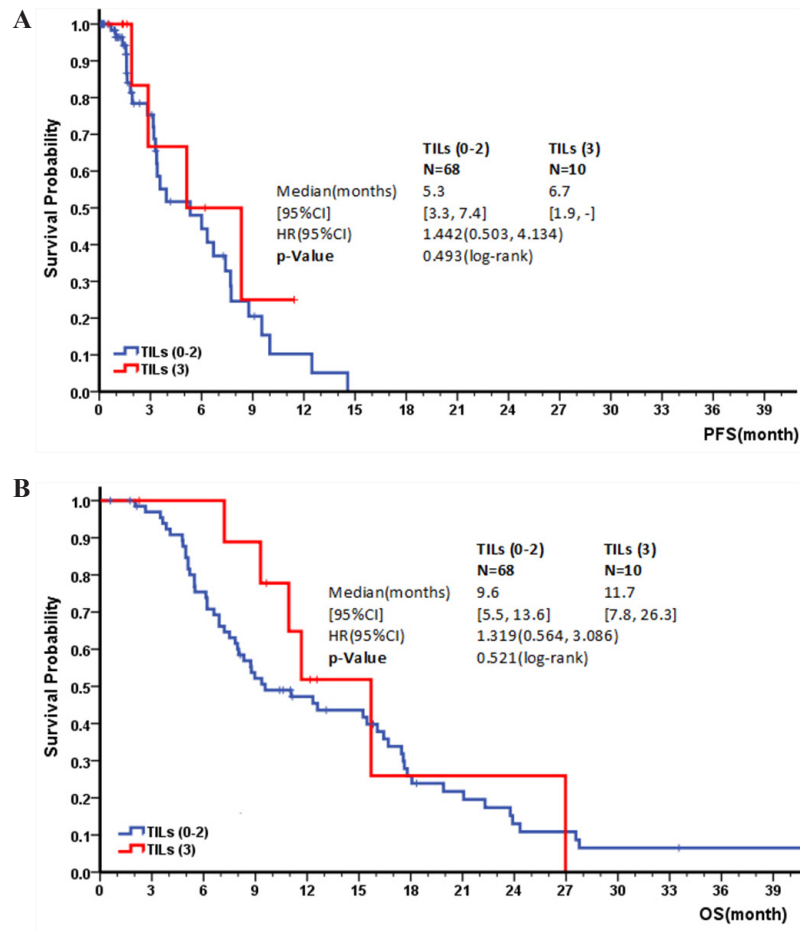


## Prognostic significance of tumor-infiltrating immune cells and PD-L1 expression in esophageal squamous cell carcinoma

### SUPPLEMENTARY FIGURES



Supplementary Figure 1: Kaplan–Meier survival curves for PFS and OS by PD-L1 expression. A & B: Correlation of PD-L1 expression and PFS/OS in the palliative chemotherapy cohort.



Supplementary Figure 2: Kaplan–Meier survival curve for PFS and OS depending on TIL level: A&B: Correlation of TIL level and PFS/OS in the palliative chemotherapy cohort.