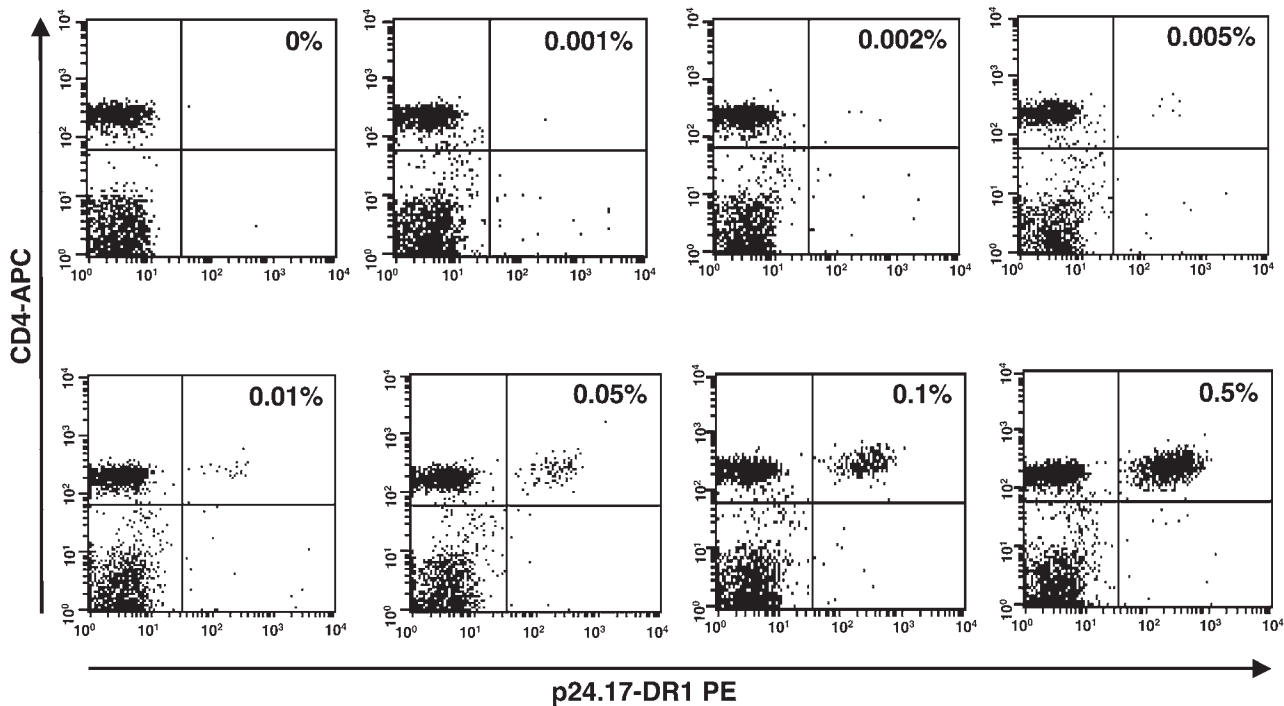
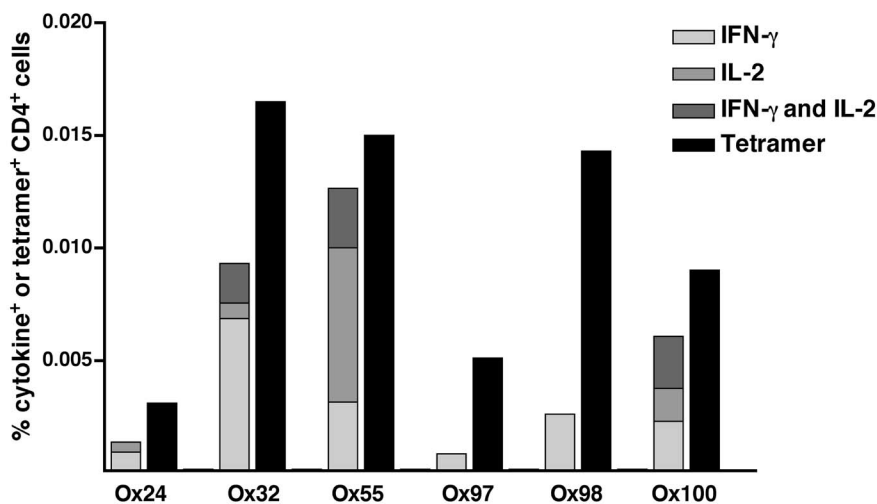


Supplemental Material



Supplementary Figure 1. Linear recovery validation of tetramer⁺ CD4⁺ T cell enrichment. PBMC were spiked with p24.17 epitope-specific CD4⁺ T cell clone 10, stained with the p24.17-DR1 tetramer and subjected to magnetic bead enrichment. The dot plots show the post-enrichment recovery of tetramer⁺ CD4⁺ clone cells for each frequency at which PBMC were spiked (shown in the upper right quadrant of each plot).



Supplementary Figure 2. Gag p24.17 peptide-specific cytokine responses are detectable in patients with p24.17-DR1 tetramer⁺ cells. The frequencies of CD4⁺ T cells out of total CD4⁺ cells that produce IFN-γ, IL-2 or both are represented by the stacked grey bars and the frequencies of tetramer⁺ cells are represented by the black bars.