

Scavenger Receptor B1 (SR-B1) Profoundly Excludes High Density Lipoprotein (HDL) Apolipoprotein AII as it Nibbles HDL Cholesteryl Ester

**Baiba K. Gillard,^{a,b} G. Randall Bassett,^c Antonio M. Gotto, Jr.,^{a,b}
Corina Rosales,^{a,b} and Henry J. Pownall^{a,b}**

Supplemental Data

- 1. Table S1.** Antibody catalog numbers and dilutions
- 2. FIGURE S1.** Apo AII distribution over time during incubation of HDL with CHO-SR-B1 cells as determined by SEC

Table S1. Antibody catalog numbers and dilutions

Antigen	Type	Species	Dilution	Catalog Number	Source
apoAI	Unconjugated	Goat anti human	1/2,000	11A-G2b	Academy Bio-Medical
apoAI	HRP-conjugated	Goat anti human	1/500	11H-G1a	Academy Bio-Medical
apoAII	Unconjugated	Goat anti human	1/1,000	12A-G1b	Academy Bio-Medical
apoAII	HRP-conjugated	Goat anti human	1/1,000	12H-G2b	Academy Bio-Medical
apoE	Unconjugated	Goat anti human	1/2000	50A-G1b	Academy Bio-Medical
apoE	HRP-conjugated	Goat anti human	1/3,000	50H-G1a	Academy Bio-Medical
Goat IgG	HRP-conjugated	Chicken anti goat	1/20,000	AP163P	Chemicon International /EMD Millipore

Figure S1

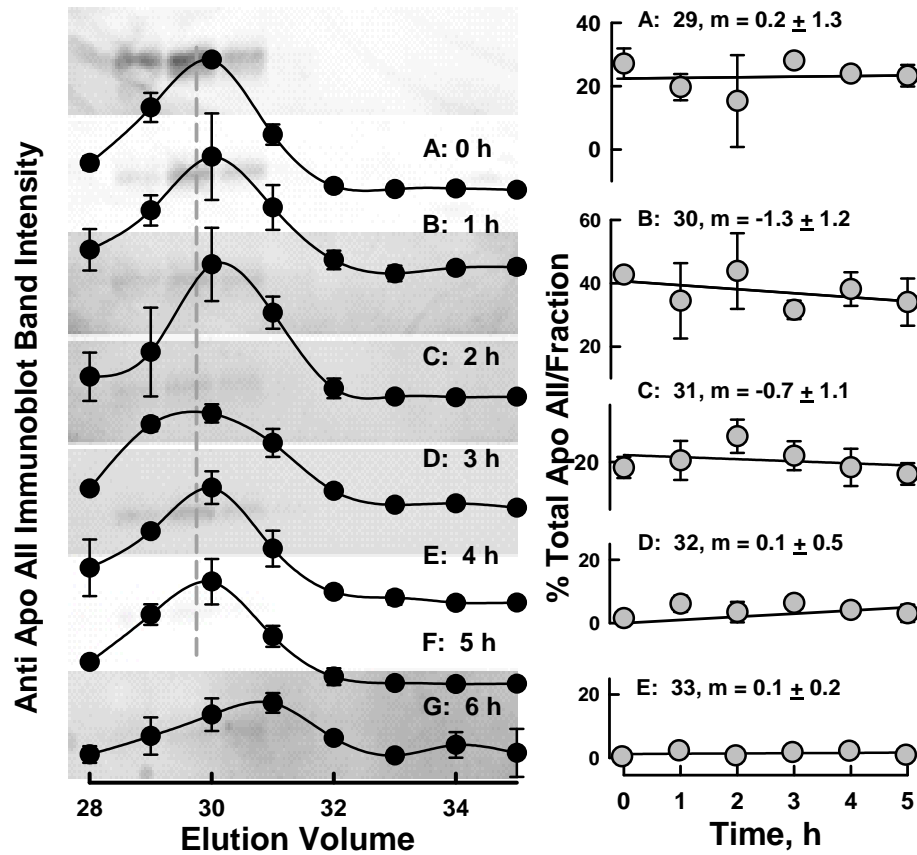


FIGURE S1. Apo AII distribution over time during incubation of HDL with CHO-SR-B1 cells as determined by SEC. Left Panel: Anti-apoAII immunoblots of SEC fractions overlaid with plots of the band intensities vs EV. Time of incubation is noted in each section. Compare this to the apo AI distribution shown in **Figure 5B**. Right Panel: Plots of the percent of the total apoAII per fraction as a function of time. SEC fractions are indicated by their respective EVs, 29 to 33 mL, as indicated for each plot. Slopes m and standard errors were calculated from a linear fit to the data. None of these slopes were significantly different from zero. Compare this to the plots for apoAI shown in **Figure 6A**.