

Supporting information

Sonochemical synthesis of sulfur doped reduced graphene oxide supported CuS nanoparticles for the non-enzymatic glucose sensor applications

Natarajan Karikalan^a, Raj Karthik^a, Shen-Ming Chen^{*a}, Chelladurai Karuppiah^{a,b} and Arumugam Elangovan^c

^aElectroanalysis and Bioelectrochemistry Lab, Department of Chemical Engineering and Biotechnology, National Taipei University of Technology, No.1, Section 3, Chung-Hsiao East Road, Taipei 106, Taiwan (R.O.C).

^bDepartment of Chemistry, National Taiwan University, No. 1, Section 4, Roosevelt Road, Taipei 106, Taiwan, ROC.

^cDepartment of Chemistry, Thiagarajar college, Madurai, Tamilnadu 625009, India.

*Corresponding author. Tel: +886 2270 17147, fax: +886 2270 25238.

E-mail address: smchen78@ms15.hinet.net (SM Chen)

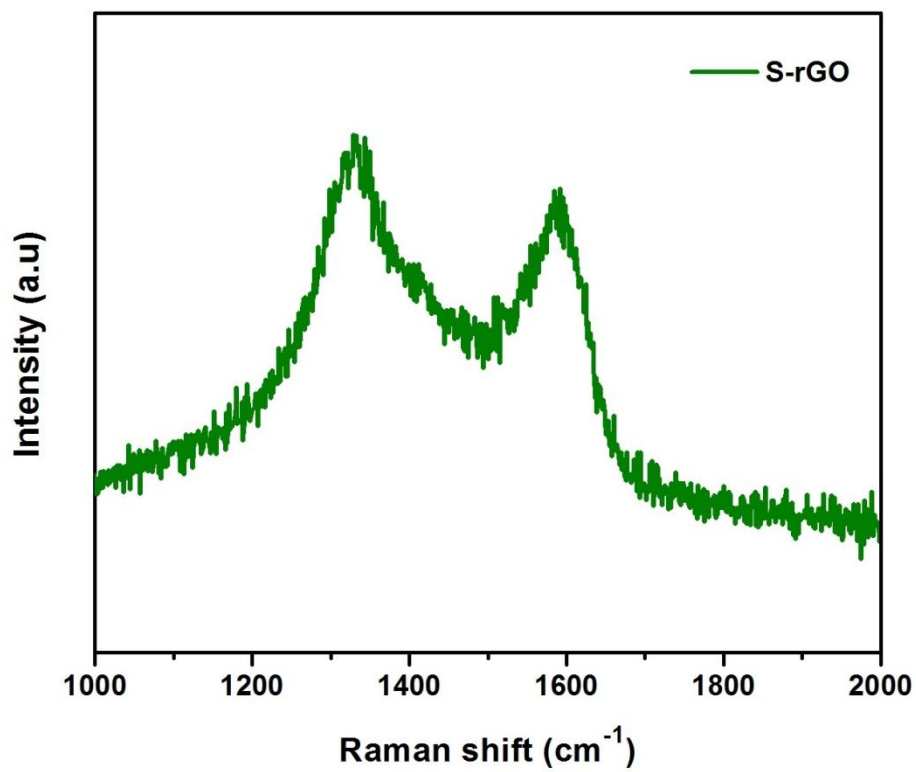


Fig S1. Raman spectrum of S-rGO

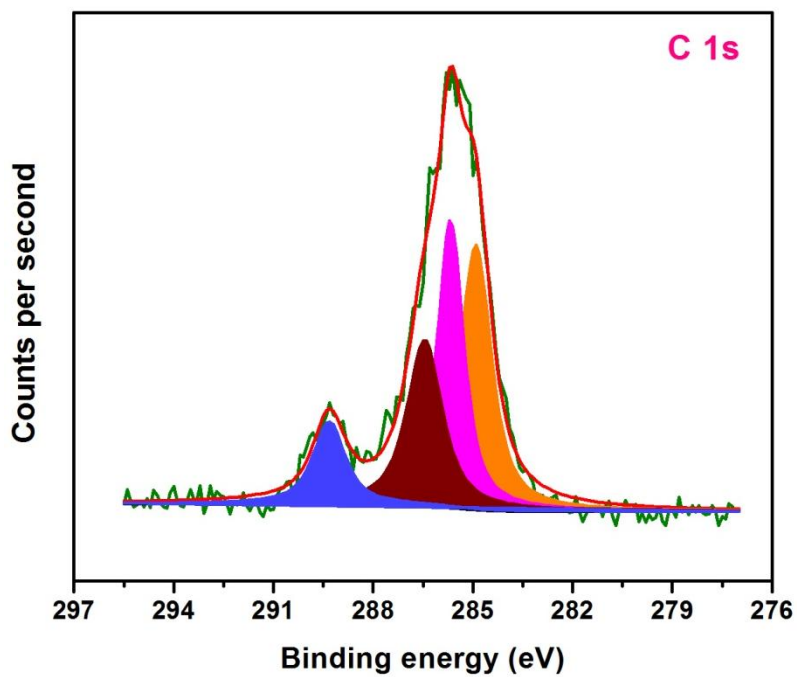


Fig S2. High resolution C 1s XPS spectrum of S-rGO

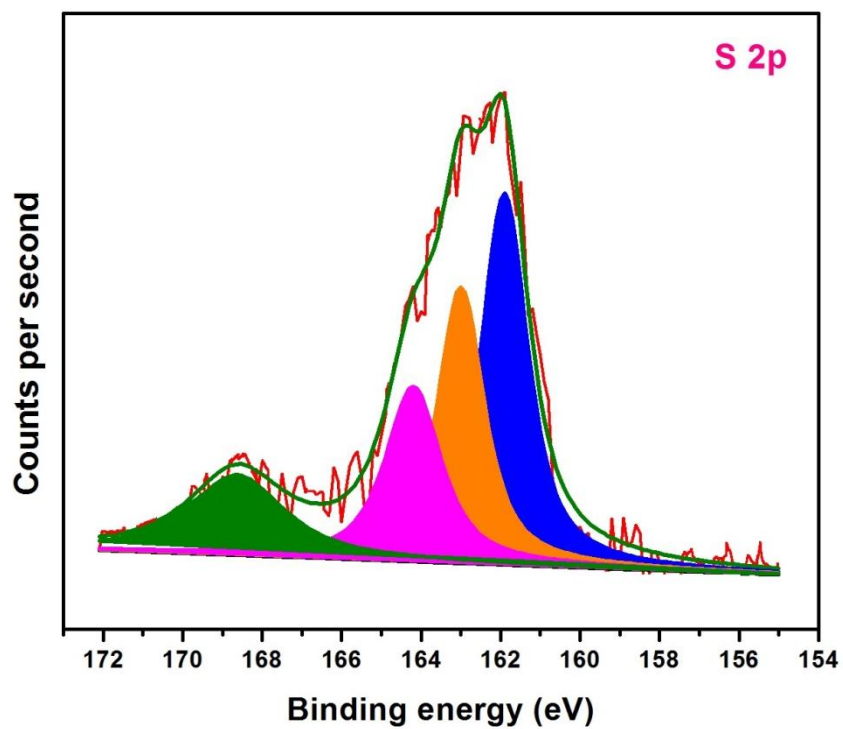


Fig S3. High resolution S 2p XPS spectrum of S-rGO

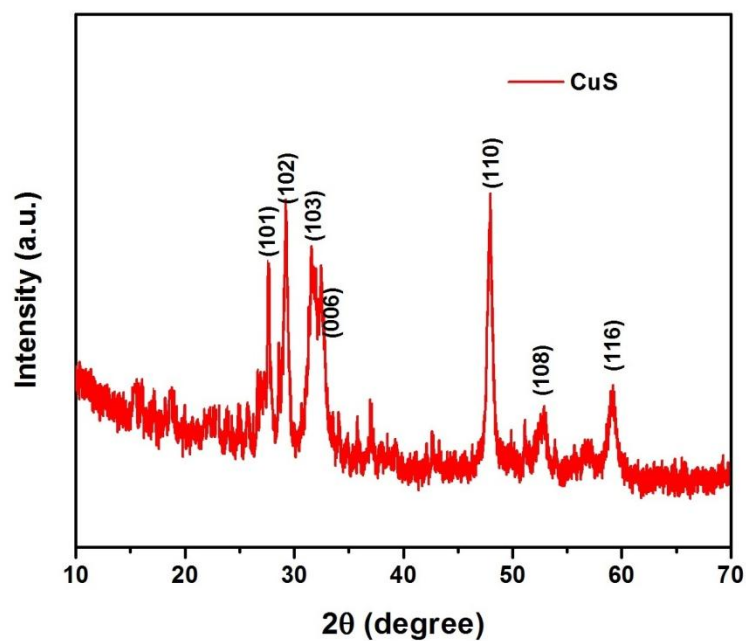


Fig S4. XRD patterns of bulk CuS

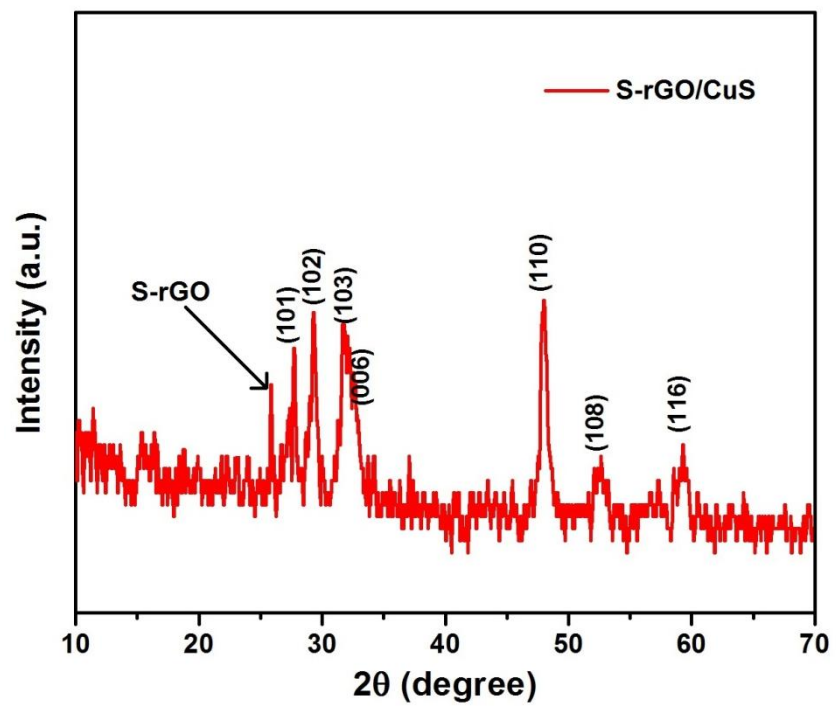


Fig S5. XRD patterns of S-rGO/CuS