

# How stable are human aesthetic preferences across the lifespan?

Cameron Pugach

*Department of Psychology  
John Jay College of Criminal Justice  
New York, NY, USA*

Helmut Leder

*Faculty of Psychology  
University of Vienna  
Vienna, Austria*

Daniel Graham\*

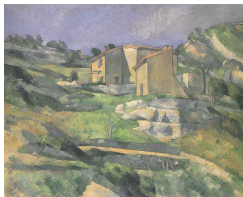
*Department of Psychology  
Hobart and William Smith Colleges  
Geneva, NY, USA*

*\*Corresponding author: [graham@hws.edu](mailto:graham@hws.edu)  
tel.: +1-315-781-4526, fax: +1-315-781-3458*

## Supplemental Materials

*Images of stimuli used in our experiments.*

### Landscape Paintings (LPa)



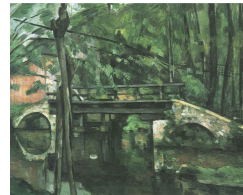
LPa1: Cezanne “*Maison en provence-le vallon*”



LPa2: Cezanne “*Bassin et lavoir du Jas de Bouffan*”



LPa3: Cezanne “*Rochers a l'estaque*”



LPa4: Cezanne “*Le Pont de maincy*”



LPa5: Anton Koch *“Der schmadribachfall”*



LPa6: Ralf Scherfose *“Dune mit strandkorb”*



LPh7: Van Gogh *“Olivenbaume”*



LPh8: Van Gogh *“Die Brucke von Langlois”*

### Landscape Photographs (LPh)



LPh1: Machotka



LPh2: Machotka



LPh3: Machotka



LPh4: Machotka



LPh5: *“Der Schmadribachfall”*



LPh6: *“Amrum”*



LPh7: "Olivenbaume in St. Remy"



LPh8: "Brucke von Langlois"

### Portrait Paintings (PPa)



PPa1: Johannes Gruetzke "Selbstbildnis"



PPa2: Norbert Weck "portrait Heinrich Boll"



PPa3: Ralf Scherfose "portrait prof. Dr. Willy Alfred Gutschelhofer"



PPa4: Johannes Heisig "portrait Brandt"



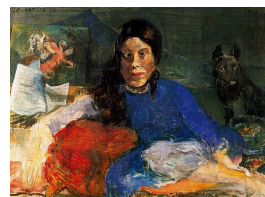
PPa5: Julian Schnabel "Portrait of Olatz"



PPa6: Alice Steel "Faith Ringgold"



PPa7: Norbert Wagenbrett "Matthias Goerne"



PPa8: Oskar Kokoschka "Adele Astaire"

## Portrait Photographs (PPh)



PPh1: "*J. Gruetzke*"



PPh2: "*Heinrich Boll*"



PPh3: "*Gutschelhofer*"



PPh4: "*Willy Brandt*"



PPh5: "*Olatz Schnabel*"



PPh6: "*Faith Ringgold*"



PPh7: "*Matthias Goerne*"



PPh8: "*Adele Astaire*"

## Distractor Stimuli (Landscapes)

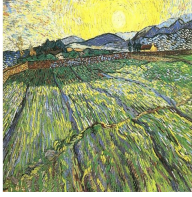


LPa1.1: Cezanne: "*Le Pigeonnier de Bellevue*"

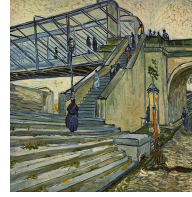


LPa5.1: Anton Koch:  
"*Reichenbachtal Mit Wetterhorn*"





LPa7.1: Van Gogh *"Weizenfeld mit u. Sonne"*



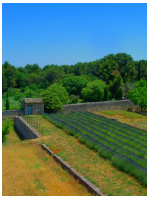
LPa8.1: Van Gogh *"Brücke von Trinquetaille"*



LPh1.1: *"Le Pigeonnier de Bellevue"*



LPh5.1: *"Reichenbachtal Mit Wetterhorn"*



LPh7.1: *"Weizenfeld mit u. Sonne"*



LPh8.1: *"Brücke von Trinquetaille"*

### Distractor Stimuli (Portraits)



PPa1.1: J. Gruetzke *"Richard von Weizsacker"*



PPa5.1: J. Schnabel *"Portrait Nina Chow"*



PPa7.1: N. Wagenbrett *"Musiker Wolfram Dix"*



PPa8.1: O. Kokoschka *"Alma Mahler"*



PPh1.1: *“Richard von Weizsacker”*



PPh5.1: *“Nina Chow”*



PPh7.1: *“Musiker Wolfram Dix”*



PPh8.1: *“Alma Mahler”*