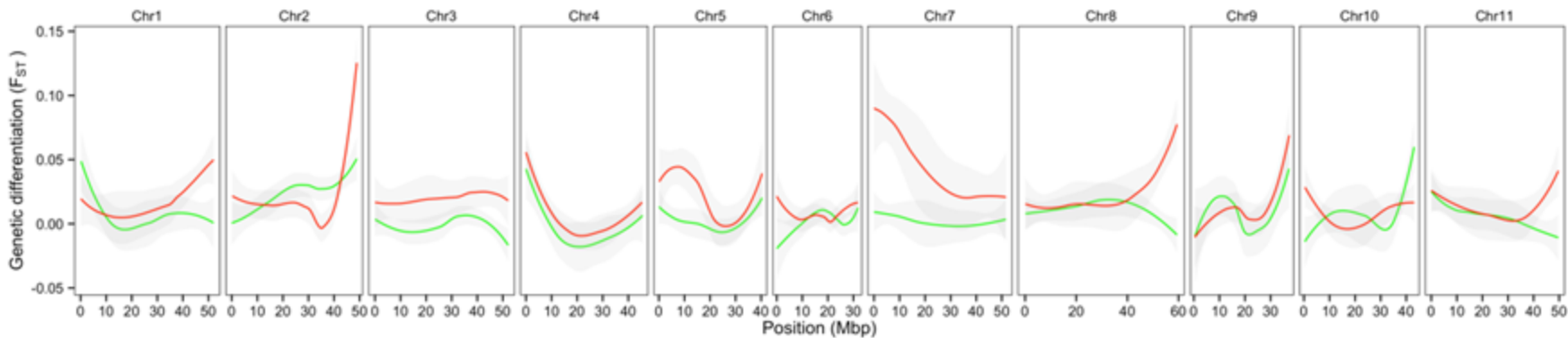
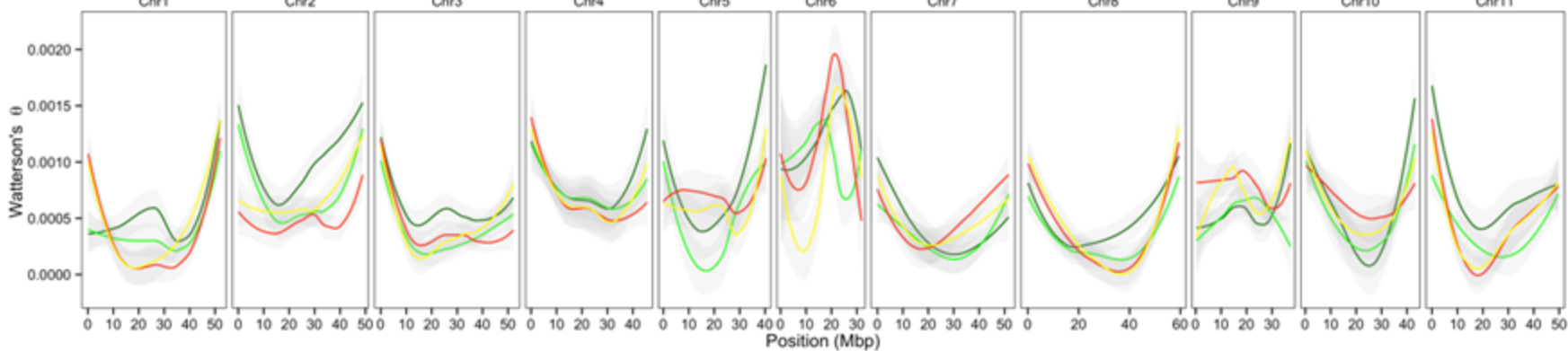


Genetic differentiation (F_{ST}) by sliding window (100 Kbp) between Cultivars/Lines and Landraces per gene pool



Watterson's nucleotide diversity by sliding window (100 Kbp) between Cultivars/Lines and Landraces per gene pool



Tajima's D by sliding window (100 Kbp) between Cultivars/Lines and Landraces per gene pool

