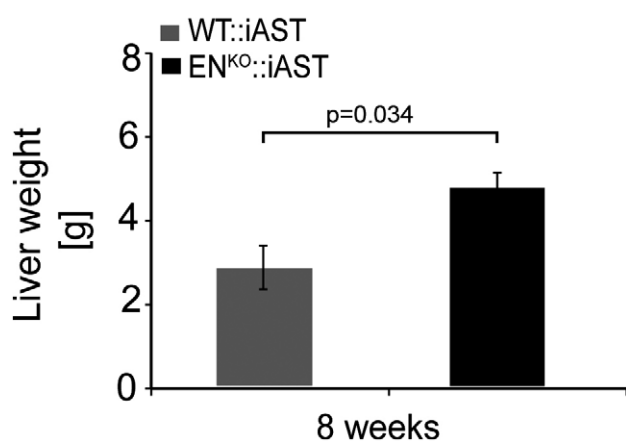
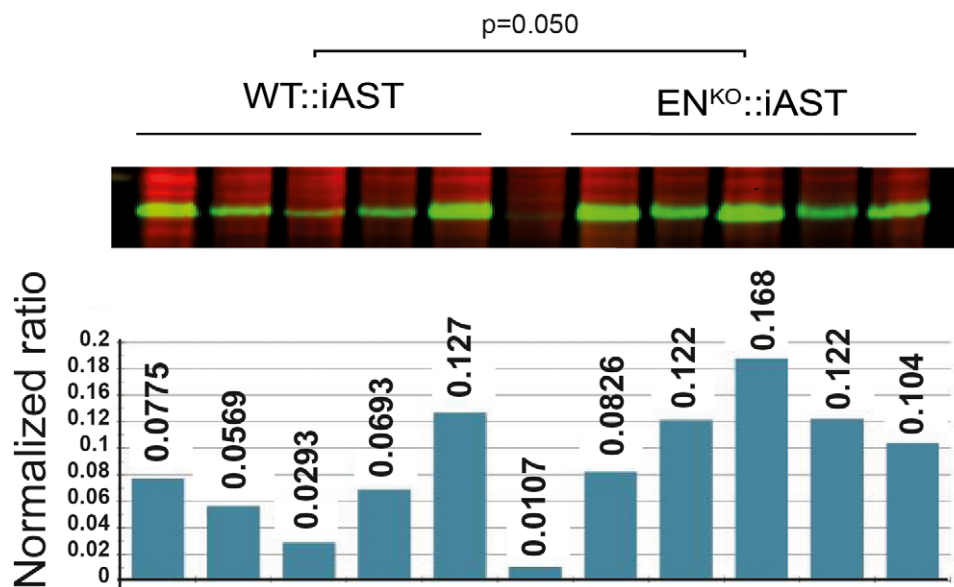


## Expanded View Figures



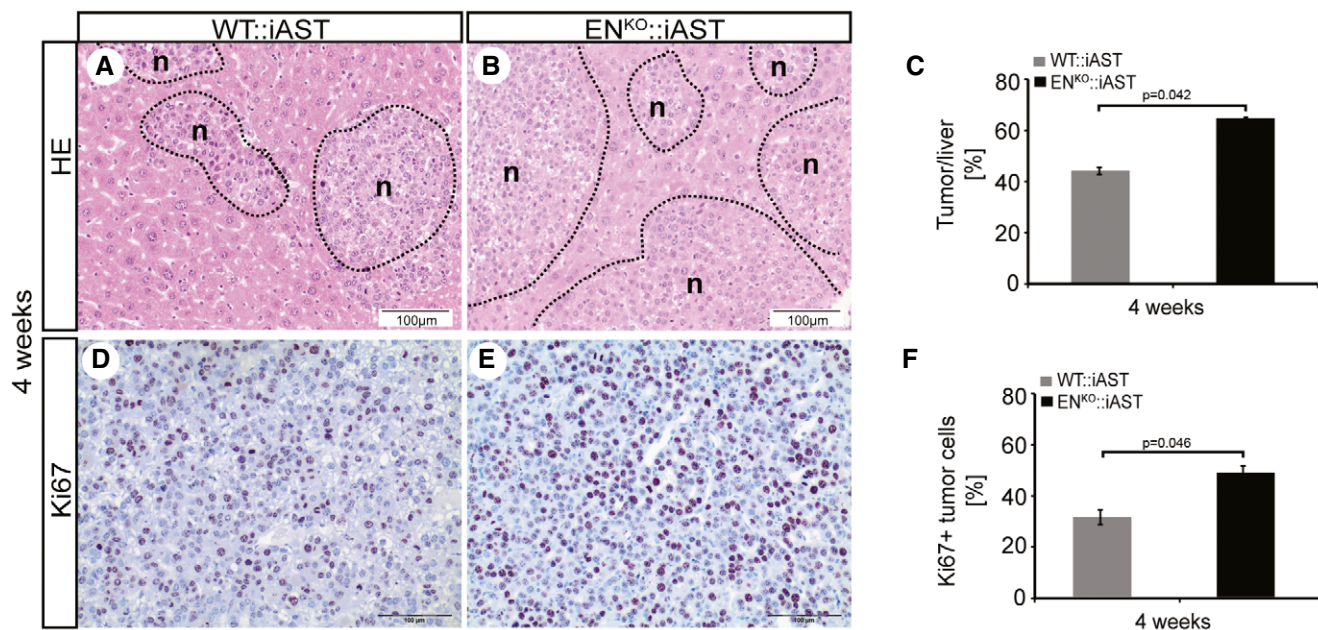
**Figure EV1. Enhanced total liver weight in EN<sup>KO</sup>::iAST mice.**

Tumorigenesis was induced as described in Fig 2 ( $n = 10-12$  mice per group). Total liver weight was measured 7 weeks after tumor induction. Data are expressed as mean  $\pm$  SD; g = gram. Statistical analysis: Student's  $t$ -test.



**Figure EV2. Enhanced proliferation in endosialin-deficient mice.**

PCNA Western blot analysis of liver lysates from WT::iAST ( $n = 5$ ) and EN<sup>KO</sup>::iAST ( $n = 5$ ) mice taken 7 weeks after tumor induction as described in Fig 2. Quantitation of PCNA protein normalized to total protein. Statistical analysis: Student's  $t$ -test.



**Figure EV3. Enhanced HCC tumorigenesis in endosialin-deficient mice after 4 weeks of tumor induction.**

A–F HE and Ki67 staining of tumor samples from WT::iAST (A, D) and EN<sup>KO</sup>::iAST (B, E) mice 4 weeks after tumor induction as described in Fig 2 ( $n = 5–6$  mice/group). (C, F) Quantitation of tumor area/liver and Ki67 proliferation. Data are expressed as mean  $\pm$  SD. Scale bars: as indicated. Statistical analysis: Student's  $t$ -test.