

Figure S5

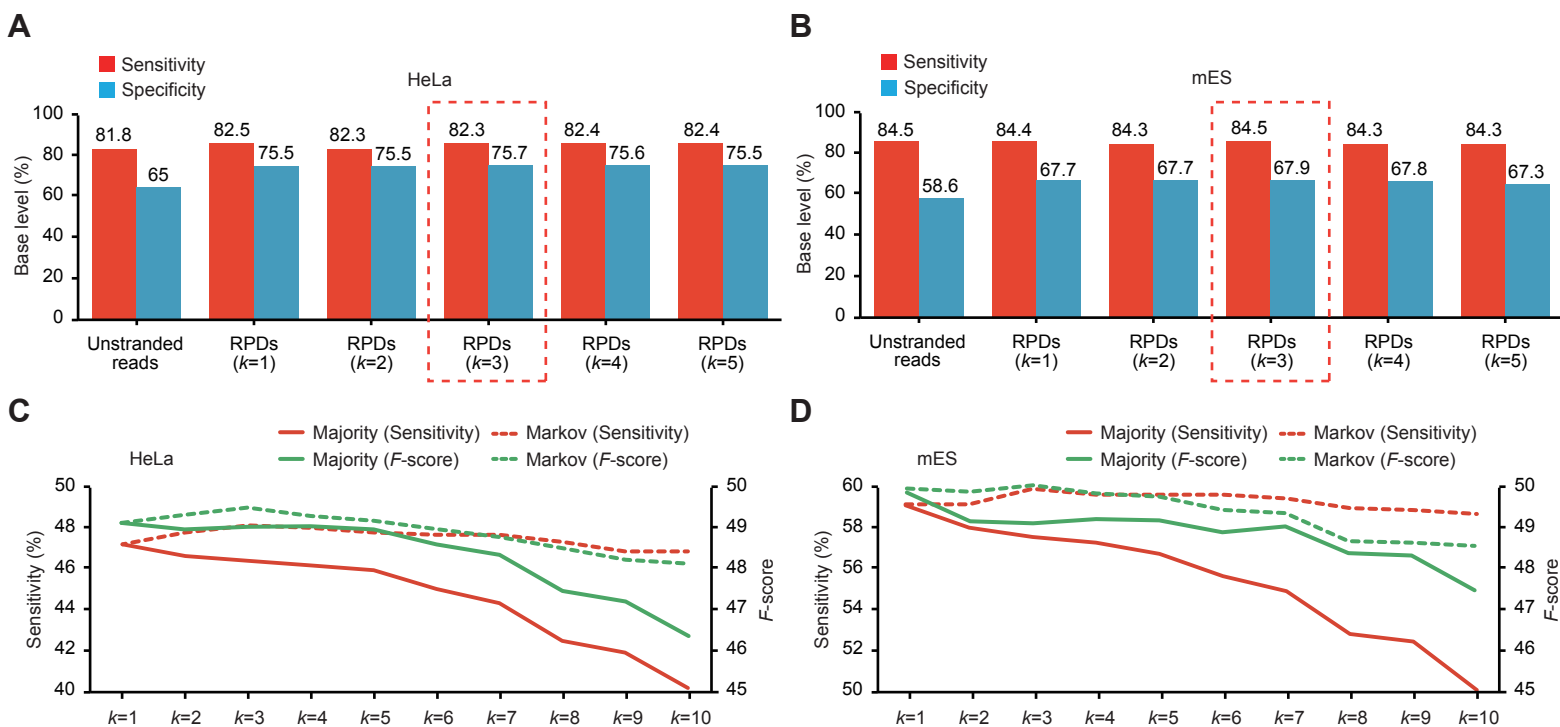


Figure S5. Systematic analysis of MC k -order

(A-B) Accuracies of RPDs across different k -orders. The optimal k -order (dotted box) was set as the k at which the specificity was maximized for HeLa (A) and mES cells (B). (C-D) Accuracies (F -scores and sensitivity) of RPDs by k MCs and k -nearest majority voting across different k values (from 1 to 10) for the antisense-overlapping loci in HeLa (C) and mES cells (D). F -score was calculated by the

$$\text{formula, } 2 \times \frac{(\text{Sensitivity} \times \text{Specificity})}{(\text{Sensitivity} + \text{Specificity})}$$