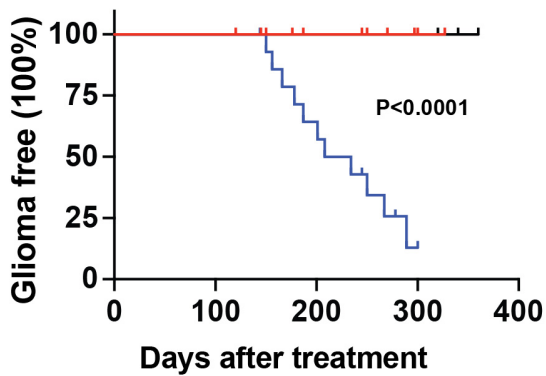
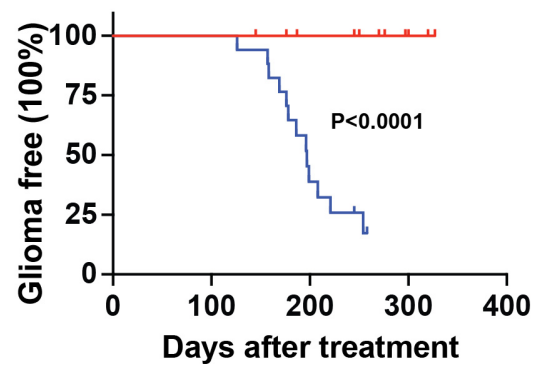
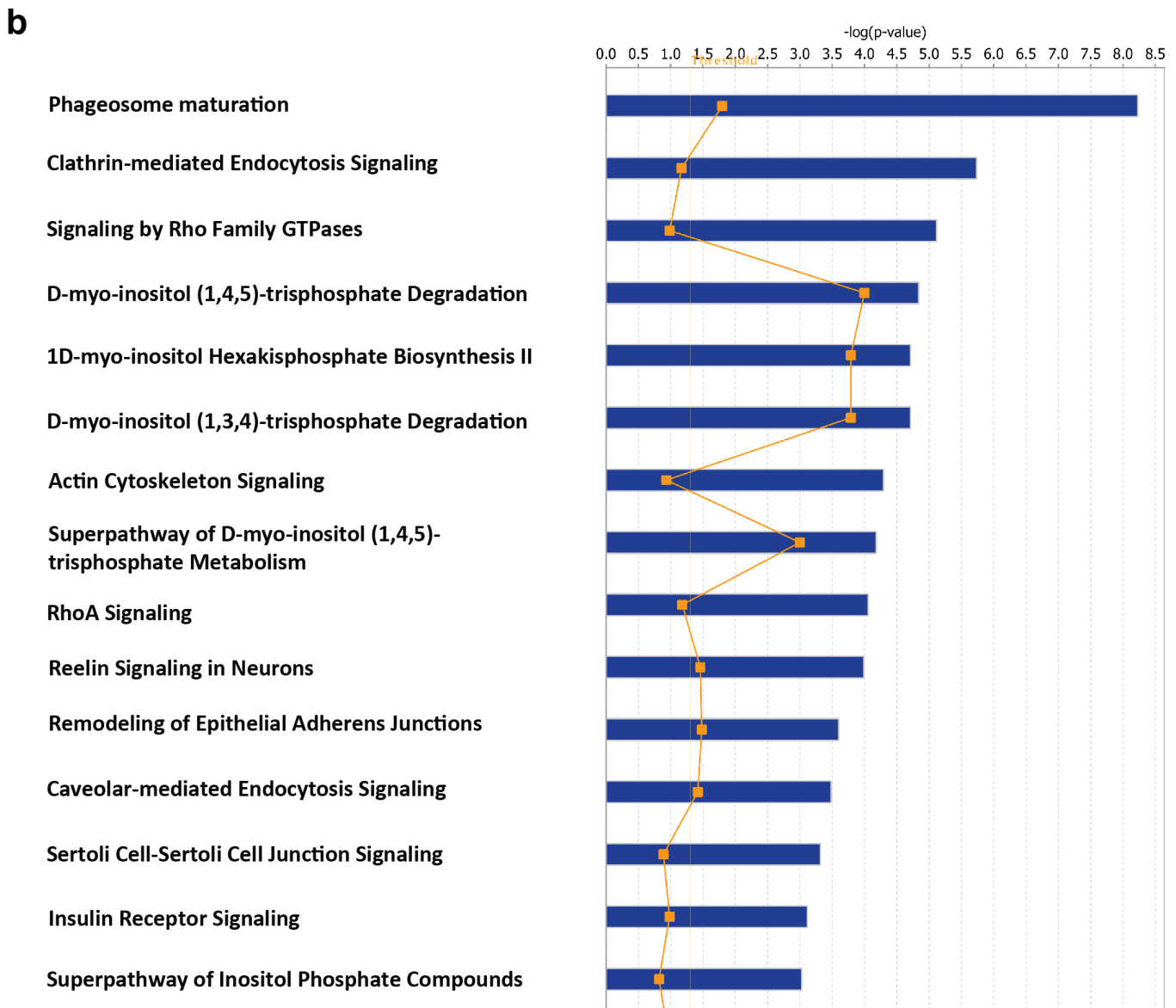
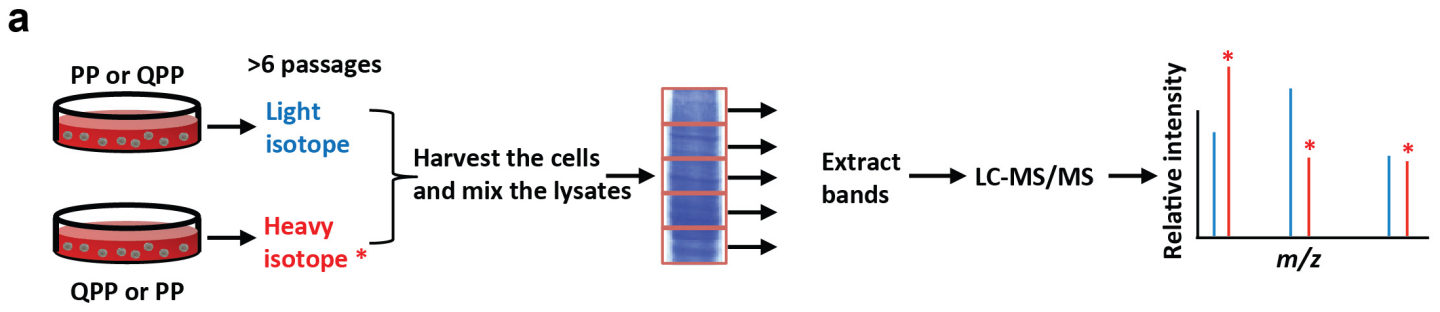


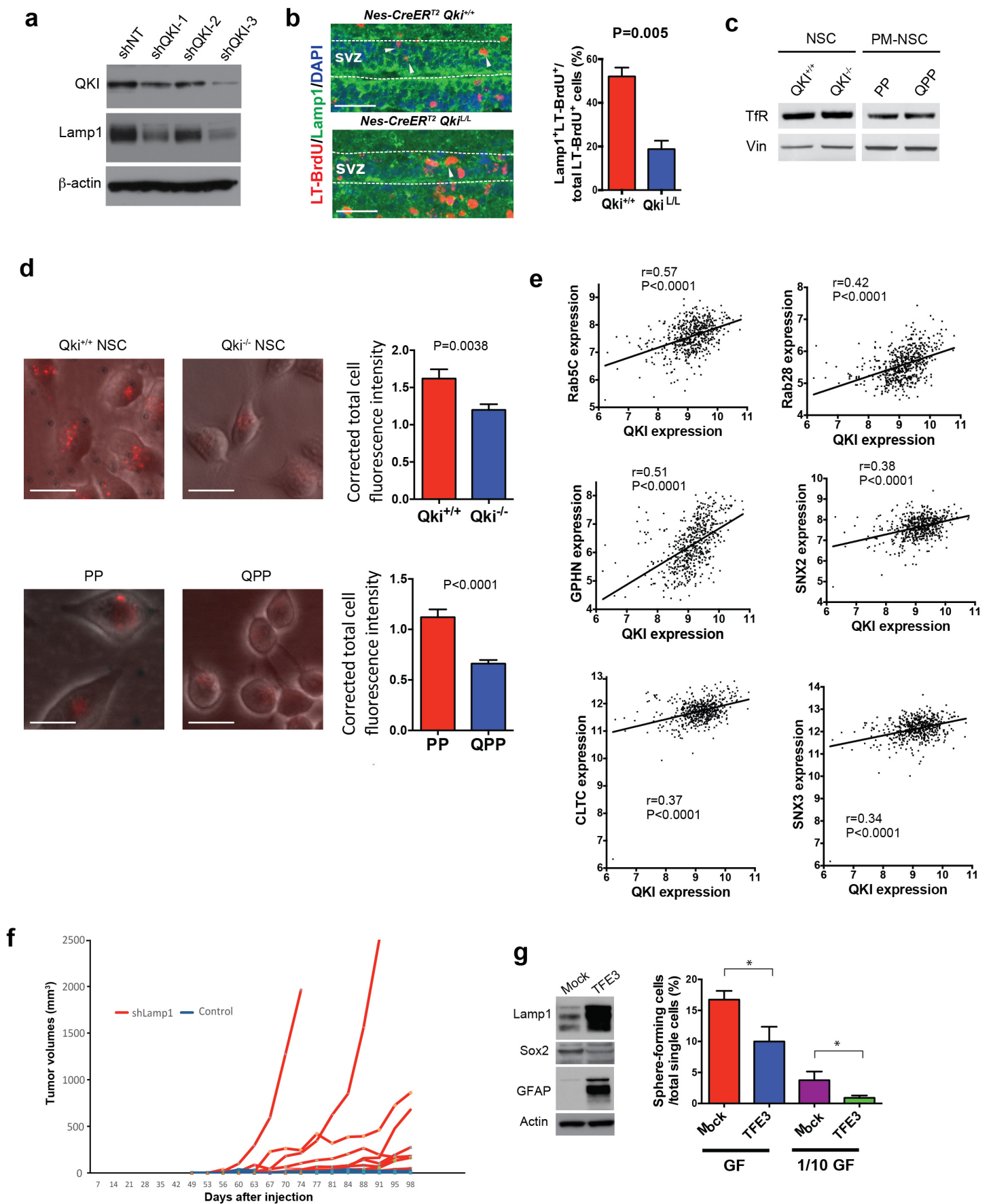
- d**
- $Nes-CreER^{T2} Qki^{L/L}$ ($n=20$)
 - $Nes-CreER^{T2} Pten^{L/L} Trp53^{L/L}$ ($n=12$)
 - $Nes-CreER^{T2} Qki^{L/L} Pten^{L/L} Trp53^{L/L}$ ($n=15$)



- e**
- $Nes-CreER^{T2} Pten^{L/L} Ink4a/Arf^{L/L}$ ($n=15$)
 - $Nes-CreER^{T2} Qki^{L/L} Pten^{L/L} Ink4a/Arf^{L/L}$ ($n=17$)







Shingu et al Supplementary Figure 7

