

SUPPLEMENTAL MATERIALS

Figure S1

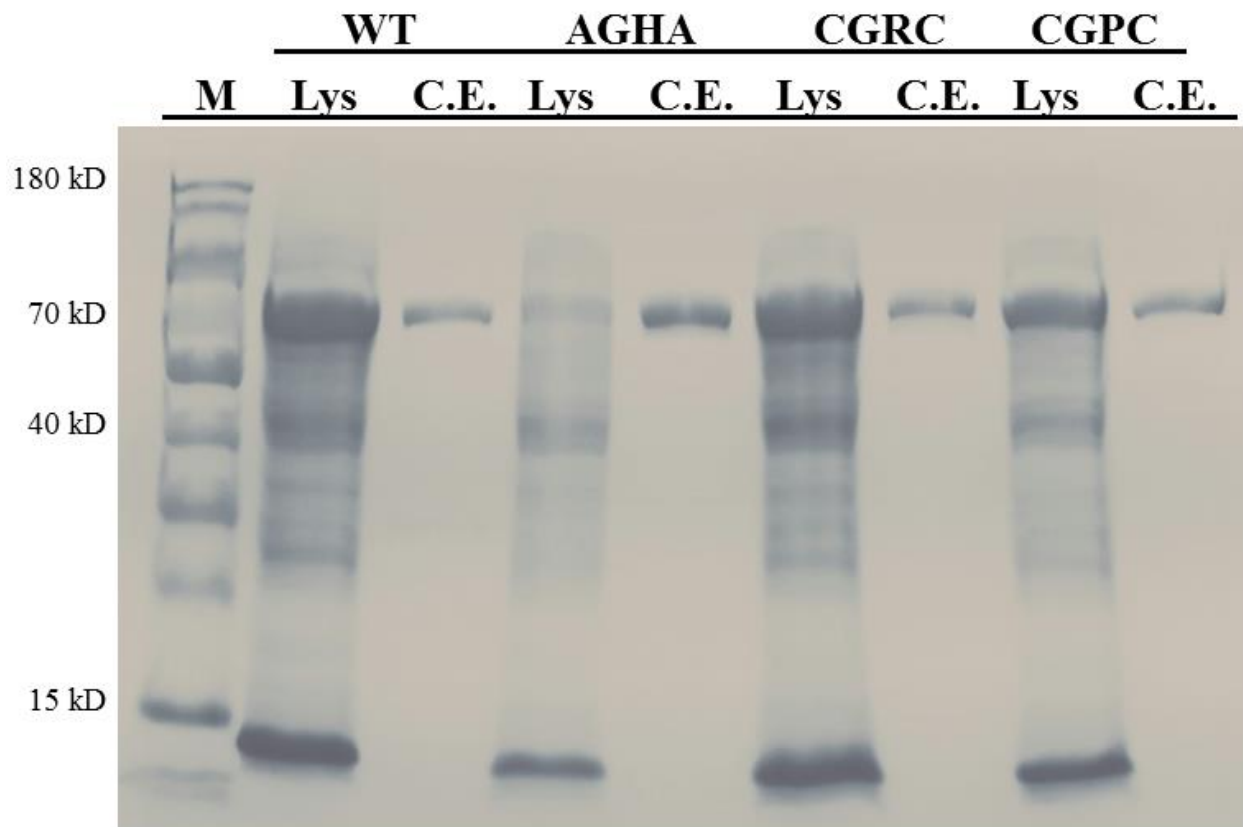


Figure S1. **Purification of PDI Variants** Clarified lysates (Lys) and concentrated eluates (C.E.) of four PDI variants (WT, AGHA, CGRC, CGPC) were generated during purification. 0.01% of the total volume of each fraction was diluted to 20 μ L with 1X HBS and separated via SDS-PAGE electrophoresis under reducing conditions.