

Supplementary Materials: GC-MS Analysis and Preliminary Antimicrobial Activity of *Albizia adianthifolia* (Schumach) and *Pterocarpus angolensis* (DC)

Mustapha N. Abubakar and Runner R. T. Majinda

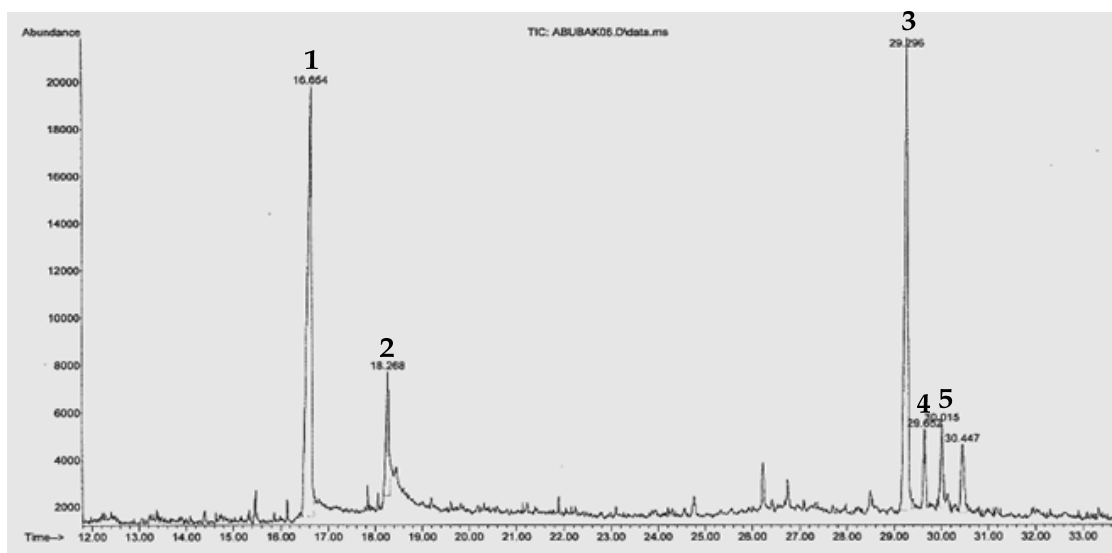


Figure S1. GC-MS chromatogram of the *n*-hexane (heartwood) extract of *A. adianthifolia*.

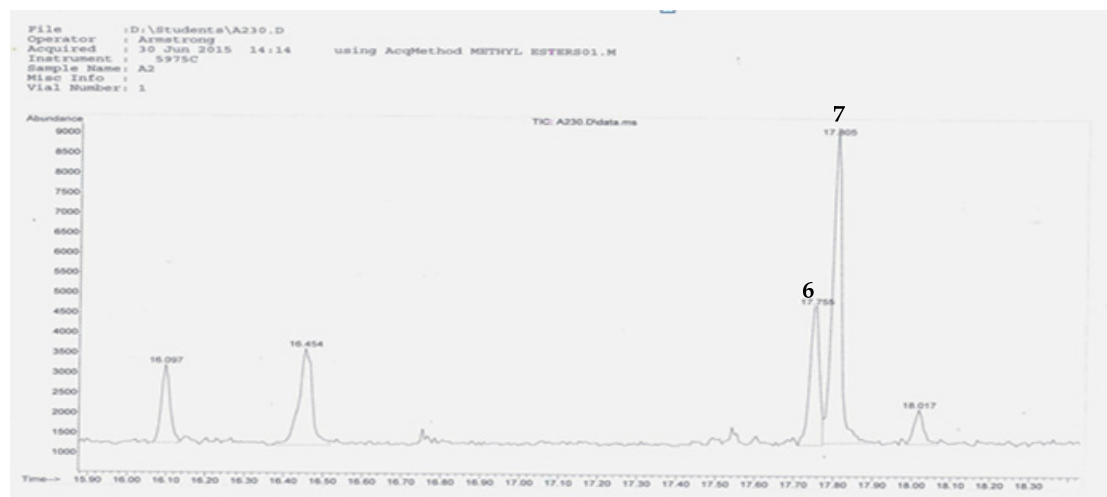


Figure S2. GC-MS chromatogram of Sub-fraction “A” of the chloroform (heartwood) extract of *A. adianthifolia*.

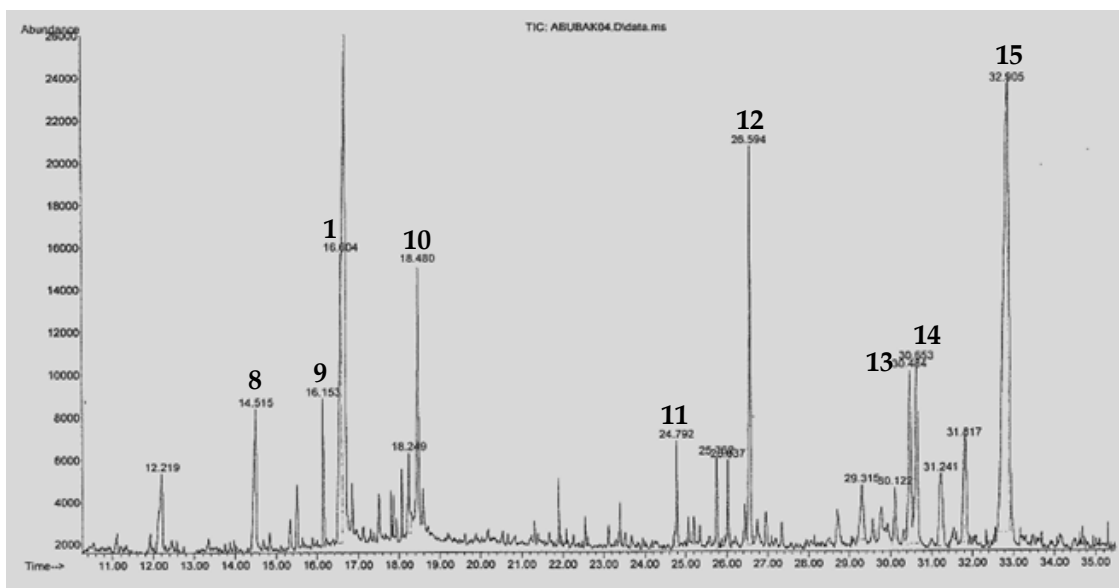


Figure S3. GC-MS chromatogram of the *n*-hexane (stem bark) extract of *P. angolensis*.

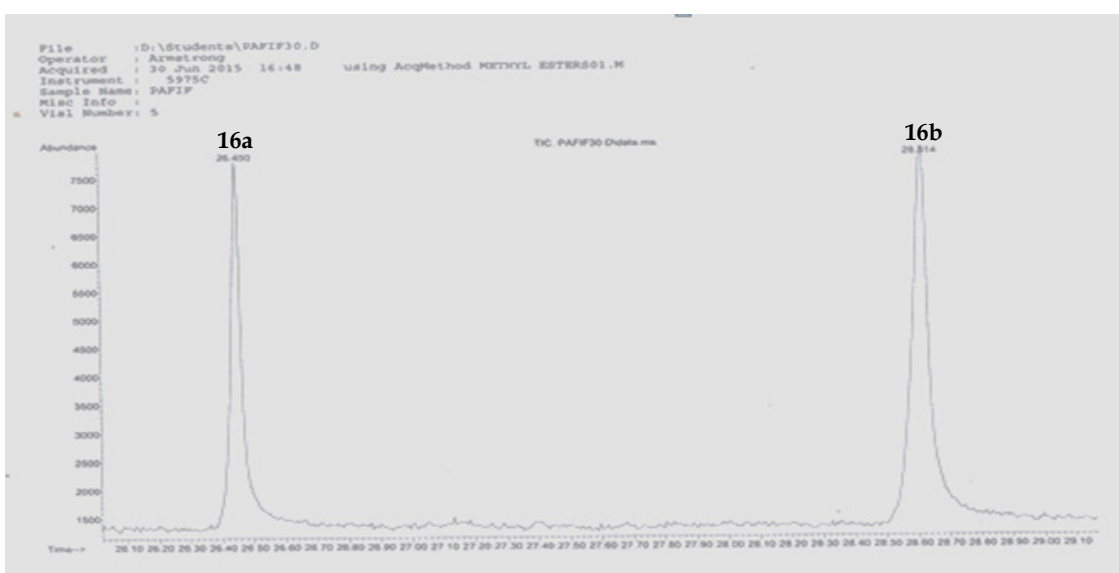


Figure S4. GC-MS chromatogram of the sub-fraction F3 of the chloroform (stem bark) extract of *P. angolensis*.

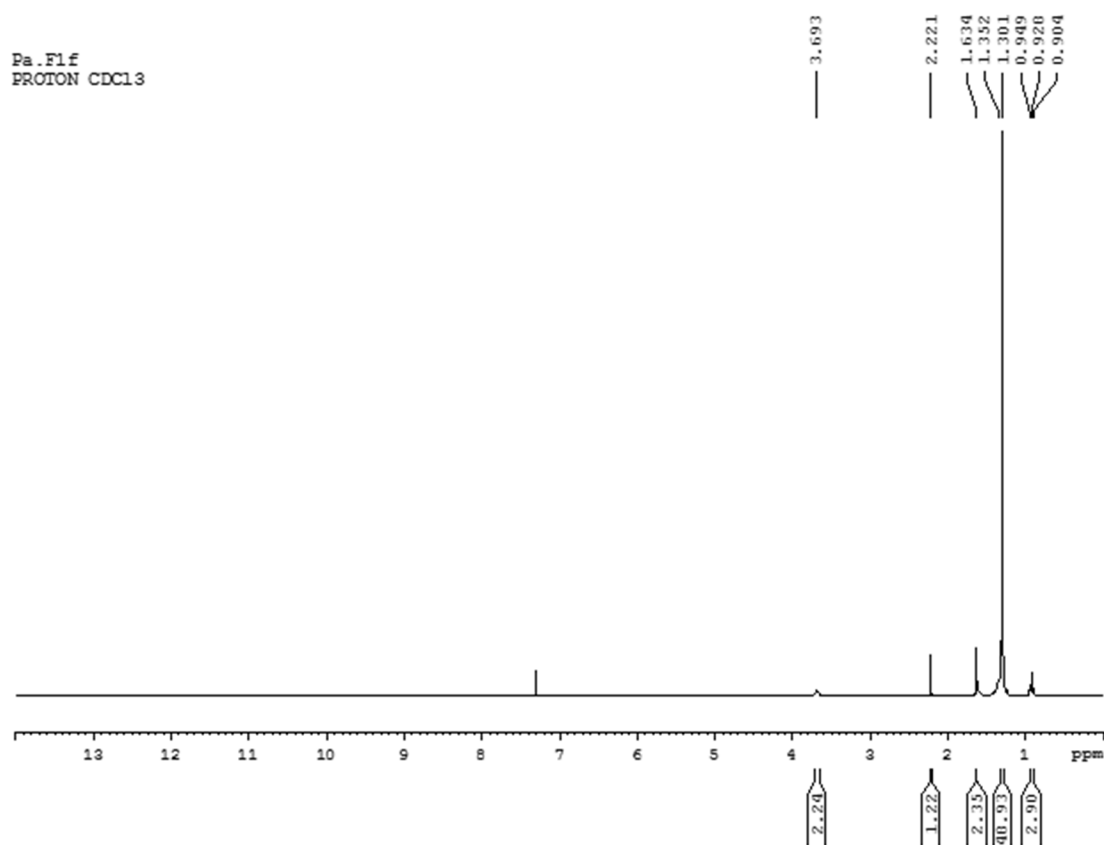


Figure S5. ^1H (300 MHz) NMR spectra of 1-octacosanol **16** in CDCl_3 .

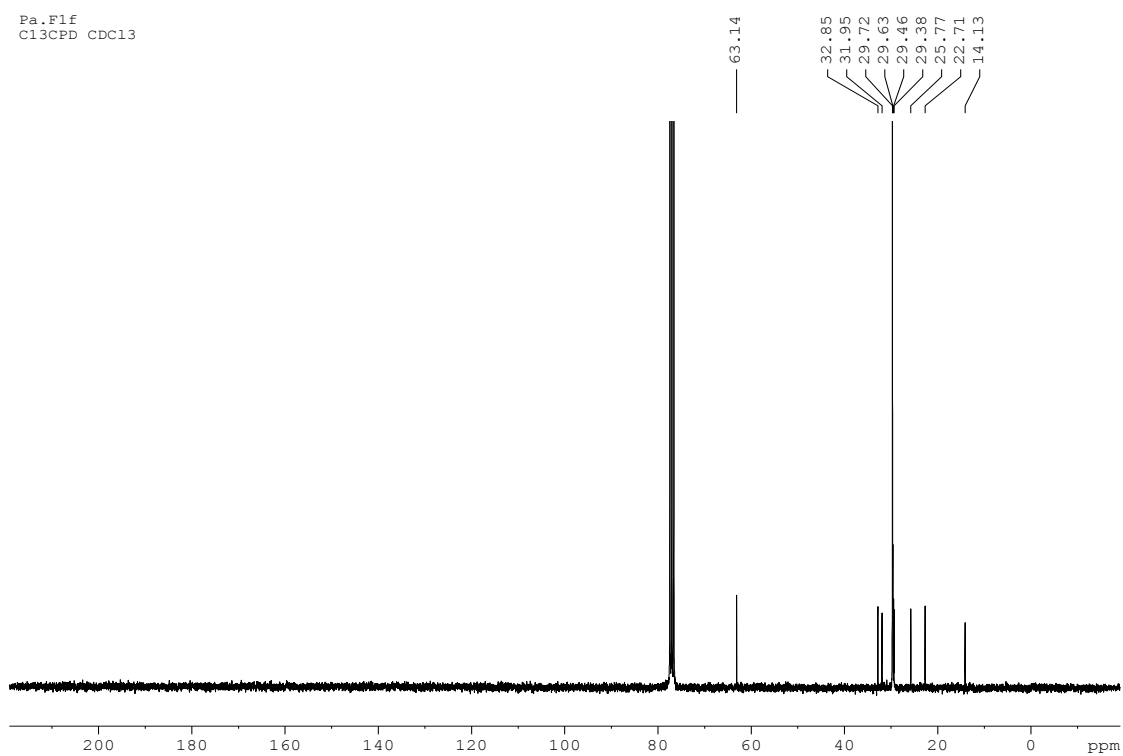


Figure S6. ^{13}C (75 MHz) NMR spectra of 1-octacosanol **16** in CDCl_3 .