

Supplementary Materials: Advanced Engineering Strategies for Periodontal Complex Regeneration

Chan Ho Park, Kyoung-Hwa Kim, Yong-Moo Lee and Yang-Jo Seol

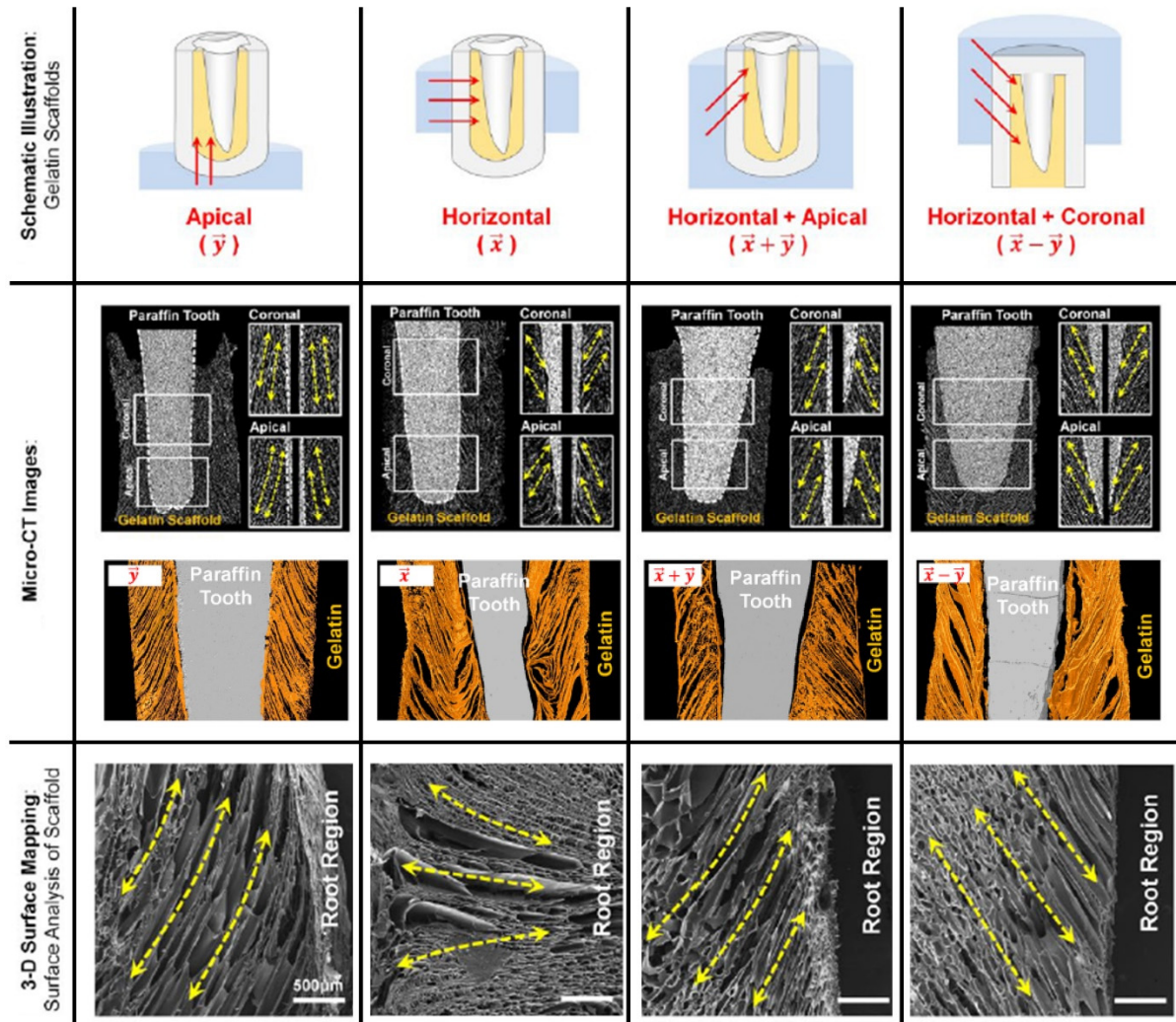


Figure S1. The freeze-casting method to create longitudinal pore structures with specific angulations. **(Top)** The schematic illustration to show different freezing directions can create and control periodontal ligament PDL-mimic architectures in gelatin scaffolds. **(Middle)** Digitized cross-sectional views and 3-D reconstructed images by micro-computed tomography (Micro-computed tomography (Micro-CT)) showed the directional pore structures in gelatin scaffolds (orange-colored). **(Bottom)** Scanning electron microscopic (SEM) images provided the longitudinal pore structures by the freeze-casting method. Yellow dashed arrow-lines represent the pore directions. Scale bar: 500 μm .