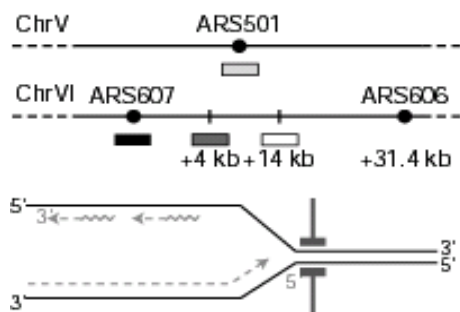
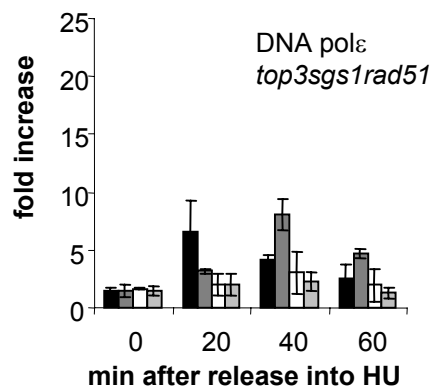


Supplementary Figure S3

A



B



(A) Primers that amplify genome regions corresponding to an early-firing origin ARS607 (black bars), a non-origin site at +4 kb (grey bars) and +14 kb (white bars) as well as a late-firing origin ARS501 (light grey bars) are shown. (B) ChIP was performed on Myc-tagged DNA pol ϵ as described in Figure 5 on synchronised GA-3033 strain.