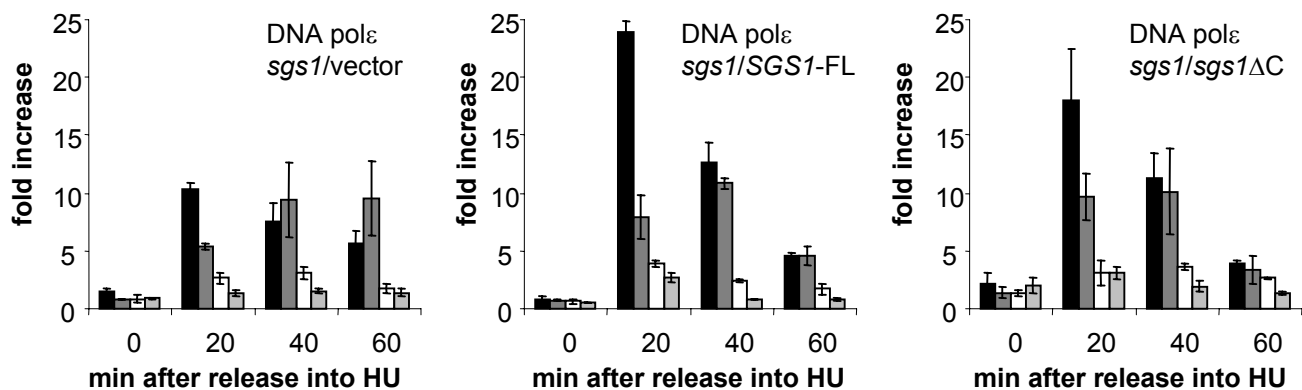


Supplementary Figure S4



GA-2450 bearing empty plasmid pRS415, or pRS415 with full length SGS1 (*SGS1*-FL) or a C-terminal truncated allele *sgs1* Δ C (truncated at amino acid position 1295) were grown on selective media and then synchronised with α -factor in YPAD, prior to ChIP. ChIP was performed on Myc-tagged DNA pol ϵ . Shading of the bars are as described in Figure 5.