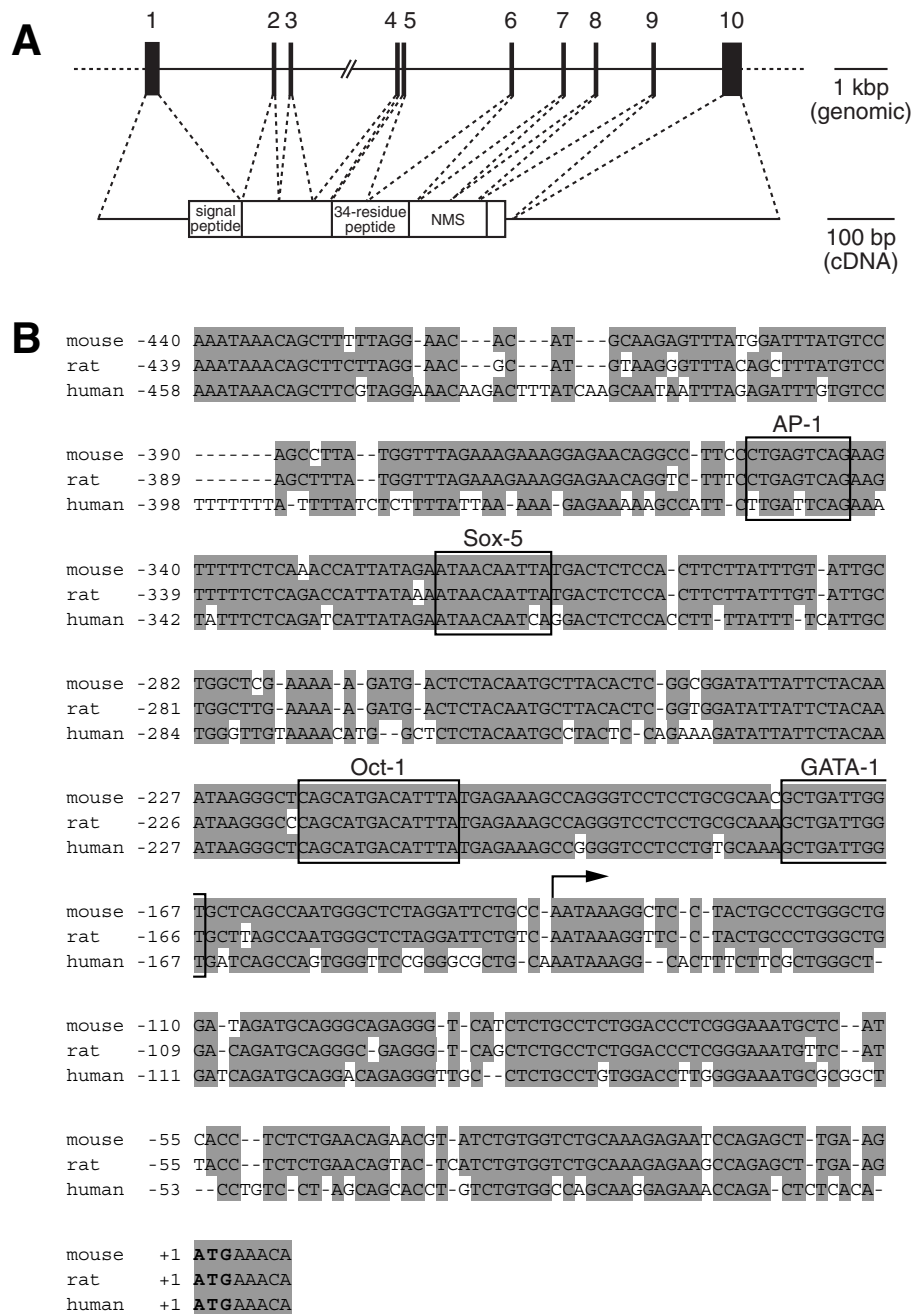


Supplementary Figure S1



Supplementary Figure S1 Structure of the NMS gene. (A) Structural organization of the mouse NMS gene. The genomic organization is presented at the top. Exons are indicated by vertical bars with exon numbers. The structure of the cDNA is shown at the bottom. The noncoding regions are represented as horizontal lines, and the coding region is indicated by the open box, which is divided into protein domains. (B) Alignment of the 5'-flanking regions of the NMS genes. The 5'-flanking region and part of exon 1 of the mouse, rat and human NMS genes are aligned, and identical residues are shaded. The ATG translation initiation codon is shown in bold letters, and is set at +1. The transcription initiation site of the mouse NMS gene is indicated by a bent arrow. The conserved putative binding sites for transcription factors are boxed.