

Supplementary Material

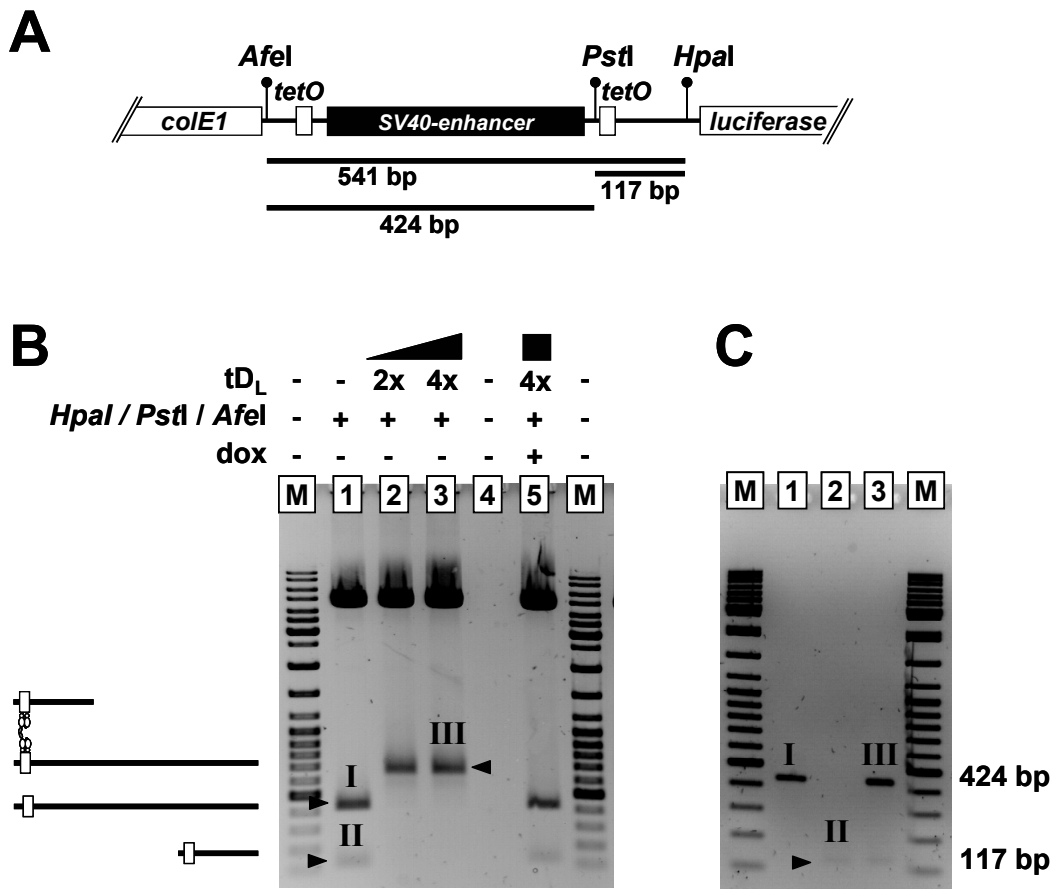


Figure S1: tD_G interacts with single *tet* operators on both sides of the SV40 enhancer *in vitro*. (A) Partial restriction map of the pWHE228 plasmid. If tD_L interacts with *tet* operators on both sides of the SV40 enhancer on supercoiled DNA, two DNA fragments (424 and 117 bp) generated after digestion with restriction enzymes *HpaI*, *AfeI* and *PstI* are expected to be bound to tD_L and migrate as a single DNA-protein complex in a native gel. (B) Analysis of tD_L-induced DNA-protein complex formation on supercoiled DNA: supercoiled pWHE228 was pre-incubated with or without tD_L, then digested and analyzed in a native agarose gel. The expected products of digestion are shown on the left. Different bands in the gel are arbitrarily numbered. M, peqGOLD DNA ladder (peqlab, Germany). (C) Analysis of DNA composition of the tD_L dependent DNA-protein complex. DNA was purified from different bands [I-III in (B)] and analyzed on a 2% agarose gel. M, peqGOLD DNA ladder (peqlab, Germany).