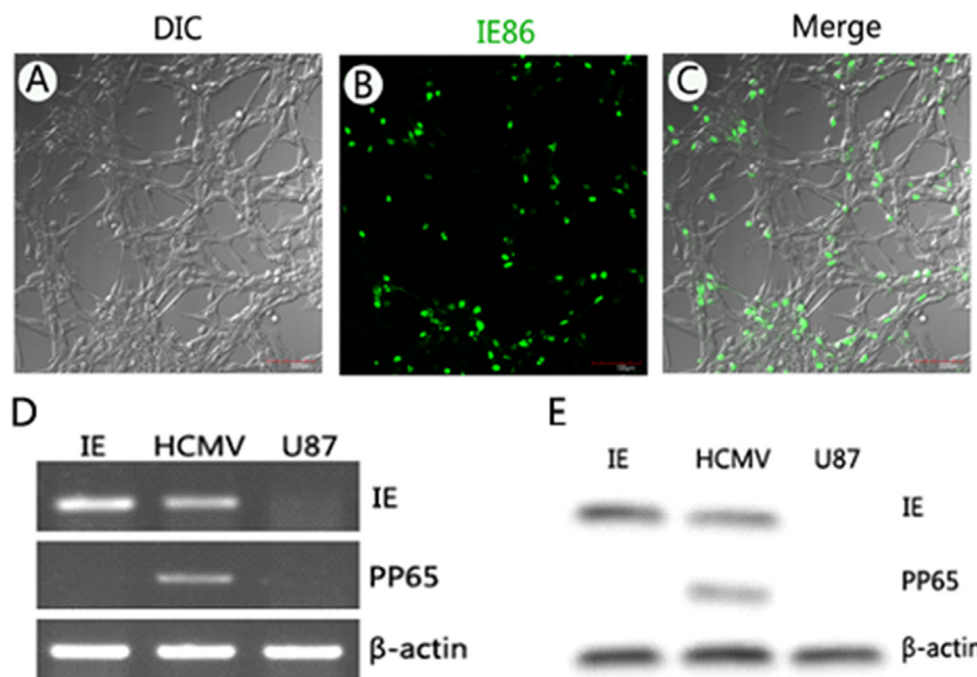
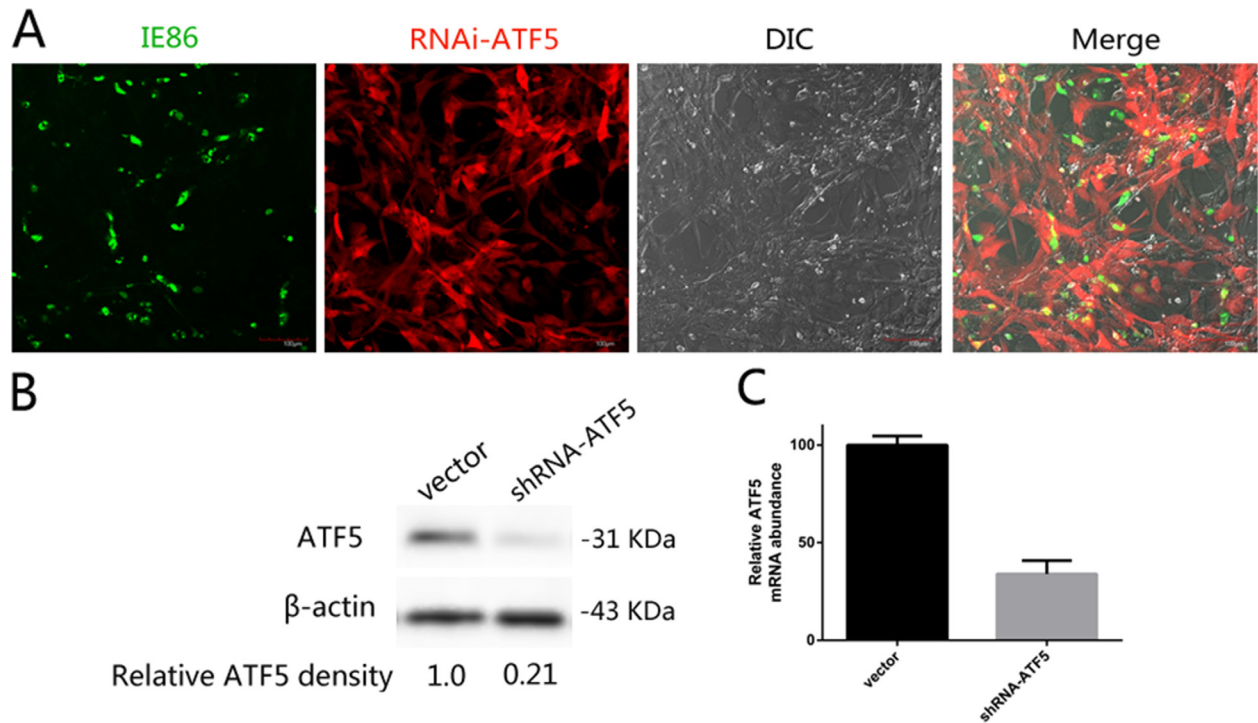


Human cytomegalovirus immediate-early protein promotes survival of glioma cells through interacting and acetylating ATF5

Supplementary Materials



Supplementary Figure 1: Expression of HCMV IE86 and PP65 in U87 human glioblastoma cells. (A–C) immunofluorescence detecting of IE86 in U87 cells transfected with plasmids encoding IE. (D) RT-PCR analysis monitoring IE86 and PP65 expression in U87 cells after HCMV infection or IE plasmids transfection. (E) western-blot analysis IE86 and PP65 protein expression in U87 cells after HCMV infection or IE plasmids transfection.



Supplementary Figure 2: Establishment of lentivirus delivery RNAi-ATF5 U87 cell lines. (A) immunofluorescence detecting of RNAi ATF5 plasmid lentivirus infection (red) and IE86 expression (green) in U87 cells. (B) western-blot analysis monitoring ATF5 expression in U87 cells stably transfected with plasmids encoding siRNA ATF5 sequences. (C) qRT-PCR analysis monitoring ATF5 expression in U87 cells stably transfected with plasmids encoding siRNA ATF5 sequences.