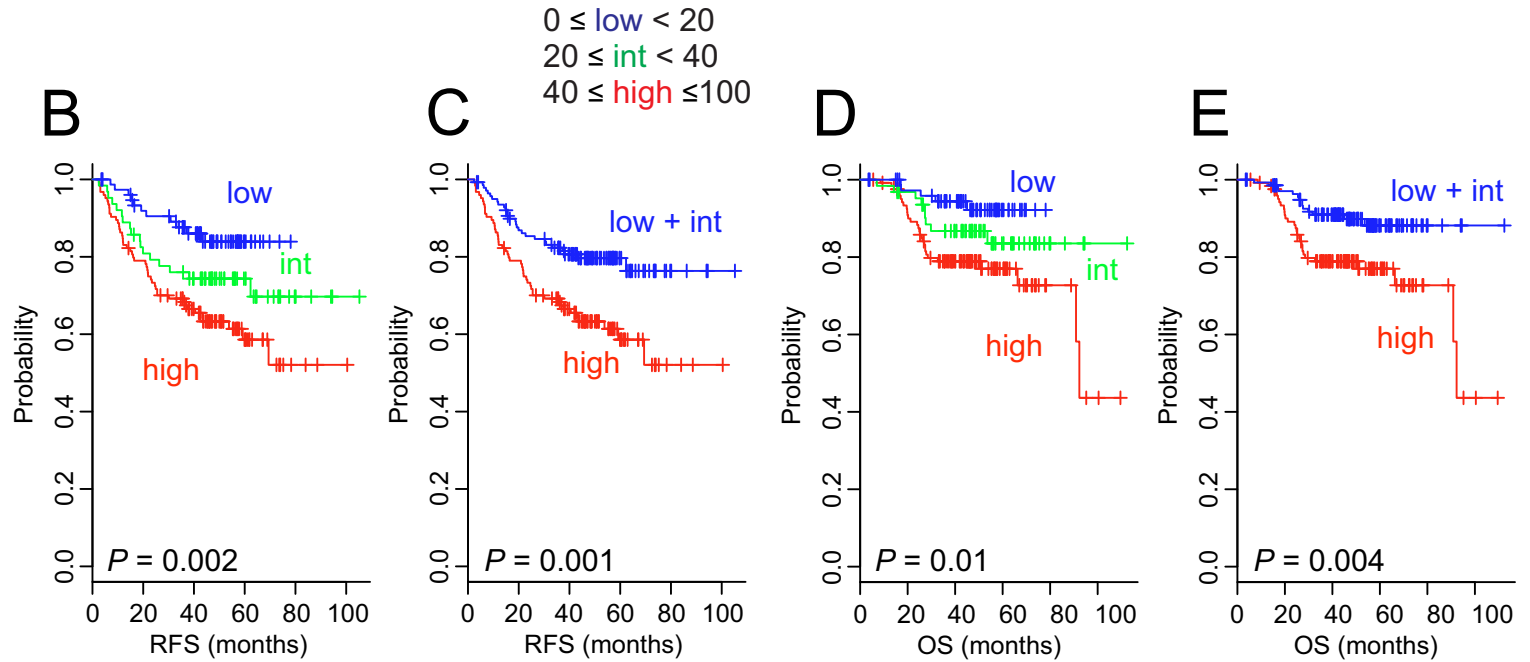
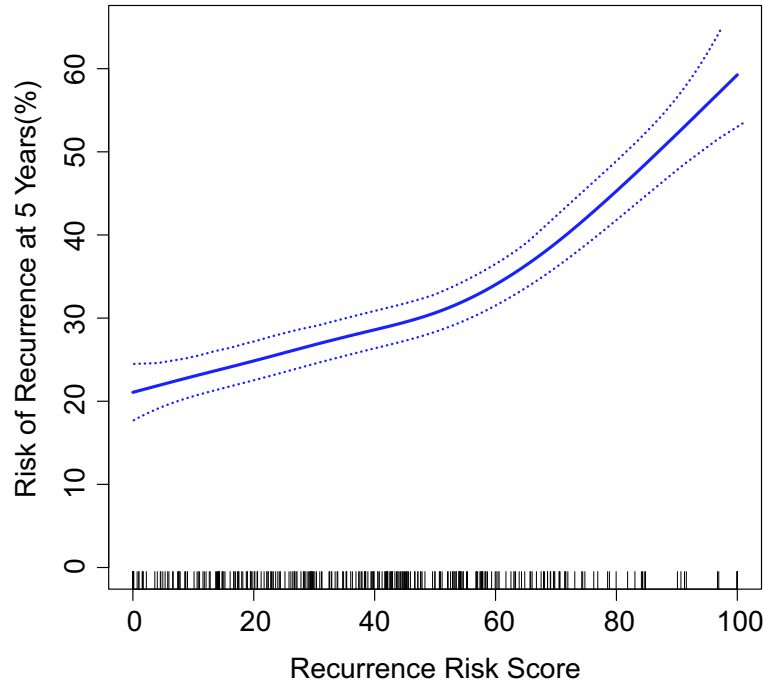


A

Supplementary Figure 9. Clinical significance of RRS in validation cohort.

(A) Relationship between the continuous recurrence risk score (RRS) and the risk of recurrence within 5 years postsurgery in the validation cohort, with 95% confidence intervals indicated. The rug plot represent the distribution of RRSs in the cohort.

(B-D) Association of the recurrence risk score with duration of recurrence free survival (RFS) and overall survival (OS) in patients with stage II and III disease in the validation cohort. int, intermediate.