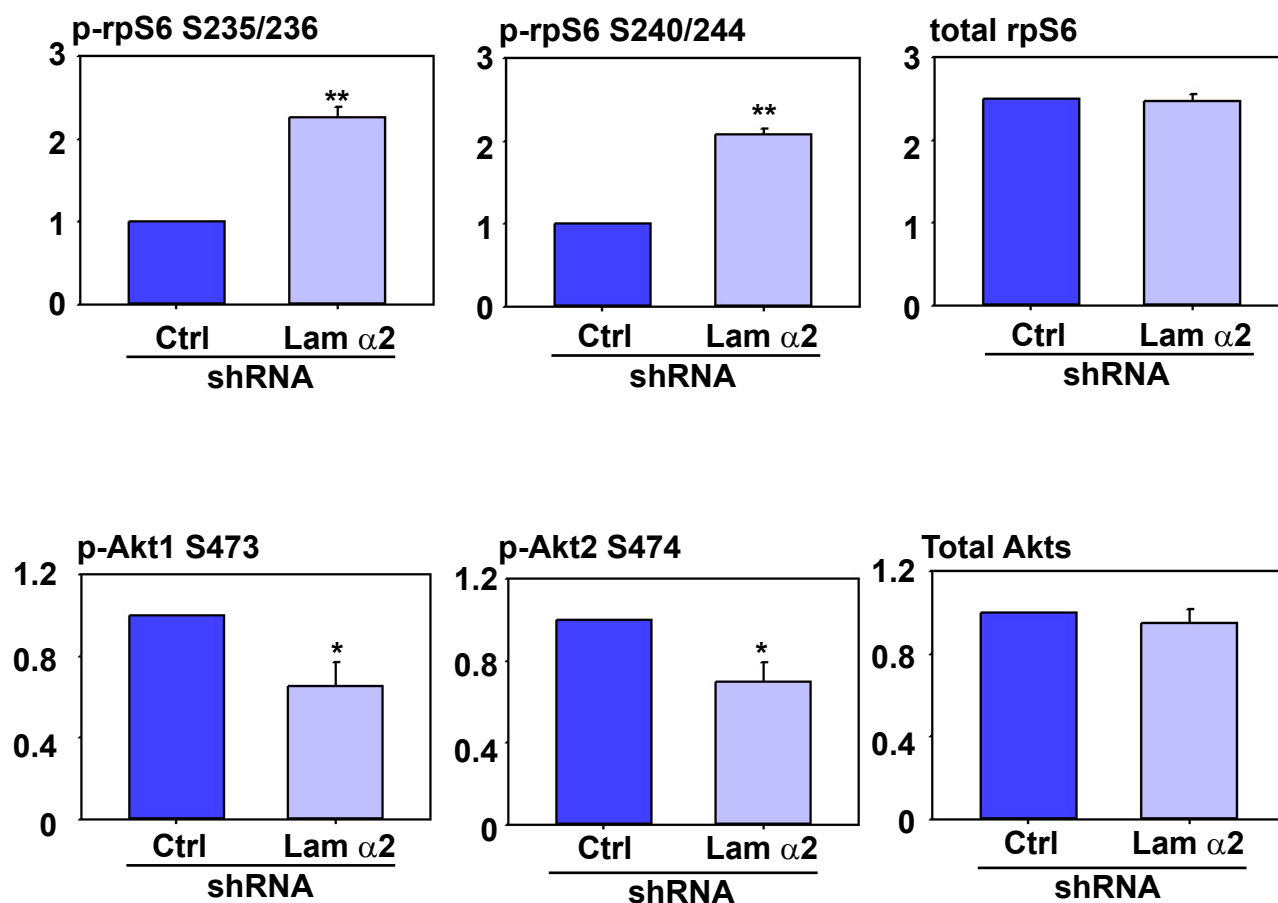


Figure S1 (Gao et al.)



**Figure S1. Steady-state levels of mTORC1 regulatory signal proteins p-rpS6 and p-Akt following laminin  $\alpha 2$  knockdown by RNAi using shRNA.** RNAi experiment was performed as outlined in the legend to Figure 2. Laminin  $\alpha 2$  knockdown was performed by RNAi using laminin  $\alpha 2$ -specific shRNA vs. the non-targeting negative control as described in *Materials and Methods* and the steady-state protein levels of p-rpS6 S235/236 and p-rpS6 S240/244 vs. total rpS6; and also p-Akt1 S437, p-Akt2 S474 vs. total Akts (including Akt1, 2 and 3) were quantified by immunoblot analysis as shown in Figure 2A. Each bar is a mean $\pm$ SD of  $n = 3$  experiments. \*,  $P < 0.05$ ; \*\*,  $P < 0.01$  by Student's  $t$ -test when compared to the corresponding control (Ctrl).