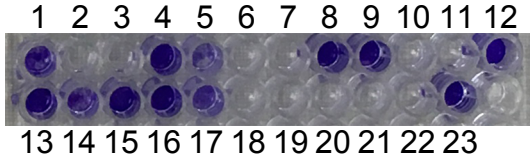
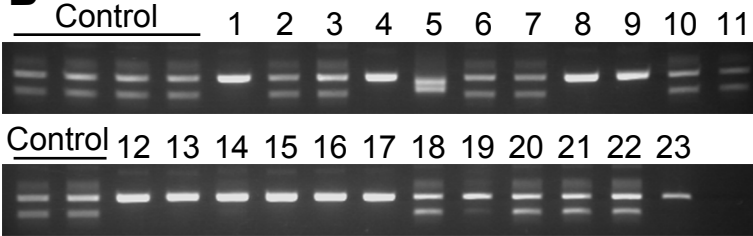
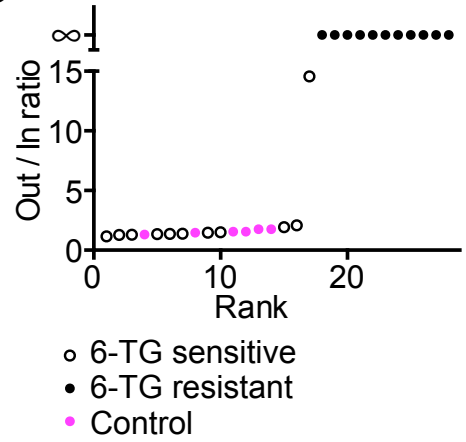


A**B****C****S2 Fig**

Evaluation of the accuracy of cbPCR. (A) Survival of different clones after HPRT1 editing at a site different from Fig 4. Viable cells are stained with crystal violet. (B) Result of cbPCR in the clones of (A). (C) All the 6-TG resistant clones have absent in-amplicons and are discriminated from the others.