

Figure S6

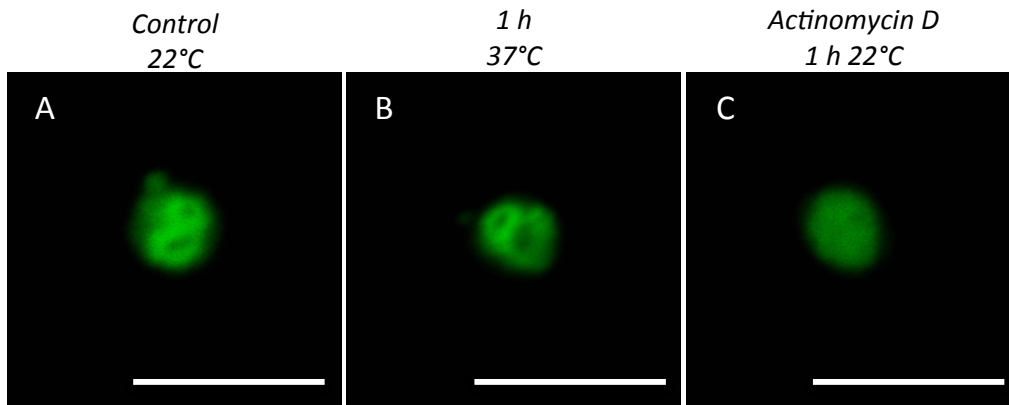


Figure S6. Heat stress did not affect nucleoli architecture. A, B, C. Confocal microscopy analysis of nucleoli architecture using FIB2-YFP in normal condition (A), after 1 h at 37°C (B), and after 1 h at 22°C in liquid medium supplemented with actinomycin D (C). White lines correspond to 10 μm. Pictures are representative of 25 nucleoli analyzed on 5 different seedlings (5 per seedlings) for each condition.