

Supplementary Information

Cdc6 contributes to abrogating the G1 checkpoint under hypoxic conditions in HPV E7 expressing cells

Hanxiang Chen¹, Qishu Zhang², Lijun Qiao², Xueli Fan^{3,4}, Weifang Zhang¹, Weiming Zhao^{1,*}
and Jason J. Chen^{2,*}

¹Department of Pathogenic Biology and Key Laboratory of Infection and Immunity of Shandong Province, Shandong University School of Basic Medical Sciences, Jinan, Shandong 250012, China

²The Cancer Research Center, Shandong University School of Medicine, Jinan, Shandong 250012, China.

³Department of Medicine, University of Massachusetts Medical School, Worcester, MA 01532, USA.

⁴Department of Dermatology, Xijing Hospital, Fourth Military Medical University, Xian, Shanxi 710032, China.

*Corresponding authors: Jason J. Chen, Email: jxchen@sdu.edu.cn. Weiming Zhao, Email: zhaowm@sdu.edu.cn.

Supplementary Table 1:**Proteins up-regulated in RPE1 E7 expressing cells**

Accession	Score	Fold	UniProtKB ID
P46821 MAP1B	155.47	∞	P46821
P42167 LAP2B	77.73	∞	P42167
Q15102 PA1B3	66.12	∞	Q15102
B4DJ66 B4DJ66	166.13	186.96	B4DJ66
P61970 NUTF2	21.53	151.69	P61970
B4DH52 B4DH52	47.06	73.21	B4DH52
Q00059 TFAM	24.95	56.1	Q00059
P50552 VASP	61.73	23.63	P50552
Q03405-2 UPAR	46.17	18.81	Q03405-2
F5GYX3 F5GYX3	48.16	13.61	F5GYX3
F5H6I5 F5H6I5	120.06	11.44	F5H6I5
P46977 STT3A	43.8	11.4	P46977
Q96C19 EFHD2	77.71	10.25	Q96C19
Q53F19-2 CQ085	26.03	8.6	Q53F19-2
Q9Y696 CLIC4	146.58	8.47	Q9Y696
Q92973-2 TNPO1	45.47	7.65	Q92973-2
O96019-2 ACL6A	41.29	7.23	O96019-2
Q9H3M7 TXNIP	39.05	6.69	Q9H3M7
O00186 STXB3	42.88	6.56	O00186
B7Z5D9 B7Z5D9	50.62	5.68	B7Z5D9
O15372 EIF3H	143.42	4.97	O15372
P50213-2 IDH3A	46	4.91	P50213-2
F5GXL2 F5GXL2	72	4.68	F5GXL2
Q8TF72 SHRM3	59.8	4.66	Q8TF72
C9JYY7 C9JYY7	32.33	4.48	C9JYY7
Q8WW12-2 PCNP	36.62	4.47	Q8WW12-2
A6NN80 A6NN80	455.74	4.37	A6NN80
B4DHC4 B4DHC4	186.28	3.96	B4DHC4
B7Z1R5 B7Z1R5	68.6	3.86	B7Z1R5
P07814 SYEP	184.38	3.75	P07814
A8MZ62 A8MZ62	32.17	3.28	A8MZ62
F5H6X6 F5H6X6	563.51	3.2	F5H6X6
Q9Y4D7-2 PLXD1	37.34	3.15	Q9Y4D7-2
Q71DI3 H32	85.25	3.03	Q71DI3
P16401 H15	135.75	2.9	P16401
B3KUP2 B3KUP2	108.93	2.82	B3KUP2
P04040 CATA	72.61	2.79	P04040
P22102 PUR2	103.29	2.74	P22102
P42892-2 ECE1	38.96	2.72	P42892-2

P41221 WNT5A	14.7	2.72	P41221
B4E1M5 B4E1M5	67.34	2.64	B4E1M5
P23381 SYWC	57.57	2.63	P23381
O60343-2 TBCD4	59.48	2.6	O60343-2
E5RFF9 E5RFF9	19.58	2.6	E5RFF9
B7Z576 B7Z576	29.49	2.59	B7Z576
E7ET98 E7ET98	56.63	2.49	E7ET98
F5GWE6 F5GWE6	44.01	2.49	F5GWE6
F5GZ28 F5GZ28	41.29	2.48	F5GZ28
P04181 OAT	153.35	2.47	P04181
E7EQG2 E7EQG2	111.66	2.45	E7EQG2
Q92820 GGH	39.85	2.45	Q92820
P00491 PNPH	31.44	2.44	P00491
P60842 IF4A1	292.06	2.38	P60842
P41091 IF2G	168.16	2.3	P41091
B2RDM2 B2RDM2	117.68	2.29	B2RDM2
P67936-2 TPM4	307.35	2.28	P67936-2
Q5T4L4 Q5T4L4	44.69	2.28	Q5T4L4
P07741 APT	71.56	2.27	P07741
O14950 ML12B	52.37	2.25	O14950
P84243 H33	127.5	2.13	P84243
P08473 NEP	32.44	2.13	P08473
Q5VTU3 Q5VTU3	69.28	2.12	Q5VTU3
A6QRJ1 A6QRJ1	32.26	2.12	A6QRJ1
P61201-2 CSN2	41.11	2.1	P61201-2
F8WJN3 F8WJN3	98.76	2.07	F8WJN3
P15374 UCHL3	96.84	2.07	P15374
Q96EK5 KBP	45.05	2.07	Q96EK5
Q96JD6 AKCL2	46.56	2.04	Q96JD6
F8VXB4 F8VXB4	607.74	2.01	F8VXB4
E7EM48 E7EM48	323.76	2.01	E7EM48
P08648 ITA5	67.96	2.01	P08648
B4DFL2 B4DFL2	259.91	1.98	B4DFL2
Q8WXX5 DNJC9	42.81	1.93	Q8WXX5
E9PB21 E9PB21	24.47	1.93	E9PB21
A6NHK2 A6NHK2	13.74	1.93	A6NHK2
P13010 XRCC5	109.9	1.92	P13010
F8VTL3 F8VTL3	474.85	1.91	F8VTL3
B3SXQ8 B3SXQ8	296.74	1.9	B3SXQ8
F5H335 F5H335	193.35	1.9	F5H335
P11766 ADHX	188.46	1.9	P11766
Q13177 PAK2	104.25	1.89	Q13177
Q13526 PIN1	82.5	1.88	Q13526
C9J5P2 C9J5P2	248.23	1.87	C9J5P2

Q5T9B7 Q5T9B7	52.71	1.87	Q5T9B7
B7Z4B8 B7Z4B8	71.63	1.84	B7Z4B8
F6RPD3 F6RPD3	41.87	1.84	F6RPD3
F8WE04 F8WE04	278.21	1.83	F8WE04
Q9Y281 COF2	146.01	1.83	Q9Y281
Q63ZY3-2 KANK2	95.87	1.82	Q63ZY3-2
F5CTF3 F5CTF3	25.16	1.82	F5CTF3
P23284 PPIB	207.26	1.81	P23284
Q4TTY5 Q4TTY5	54.37	1.81	Q4TTY5
O60271-7 JIP4	62.16	1.79	O60271-7
Q99741 CDC6	38.13	1.79	Q99741
Q9Y3C4-3 TPRKB	29.21	1.79	Q9Y3C4-3
B4DY81 B4DY81	21.83	1.79	B4DY81
Q15287 RNPS1	69.46	1.78	Q15287
P09486 SPARC	20.86	1.78	P09486
B7Z7L3 B7Z7L3	75.84	1.75	B7Z7L3

Proteins down-regulated in RPE1 E7 expressing cells

Accession	Score	Fold	UniProtKB ID
P62495 ERF1	56.18	136.12	P62495
D9YZV2 D9YZV2	187.8	110.74	D9YZV2
P02533 K1C14	75.49	55.81	P02533
B5MC82 B5MC82	68.39	47.6	B5MC82
E9PQN9 E9PQN9	73.66	44.5	E9PQN9
Q9UNX4 WDR3	25.74	38.28	Q9UNX4
Q9BPX5 ARP5L	67.12	25.33	Q9BPX5
B3KQ95 B3KQ95	34.55	24.25	B3KQ95
F8WCG3 F8WCG3	67.96	20.12	F8WCG3
F8VY02 F8VY02	118.36	19.77	F8VY02
F5H6X2 F5H6X2	57.06	16.15	F5H6X2
P35527 K1C9	40.88	12.99	P35527
F5H2F4 F5H2F4	138.84	10.85	F5H2F4
E9PAV3 E9PAV3	135.16	10.12	E9PAV3
Q9H3N1 TMX1	49.87	9.51	Q9H3N1
F8W7C6 F8W7C6	214.25	7.07	F8W7C6
Q8N995 Q8N995	53.99	6.26	Q8N995
E9PS42 E9PS42	28.74	3.58	E9PS42
Q92520 FAM3C	23.59	2.88	Q92520
O94925-3 GLSK	50.78	2.67	O94925-3
Q9Y3D6 FIS1	43.54	2.63	Q9Y3D6
F5GXL9 F5GXL9	72.11	2.6	F5GXL9
F8WAM4 F8WAM4	99.29	2.57	F8WAM4
P17931 LEG3	39.16	2.57	P17931

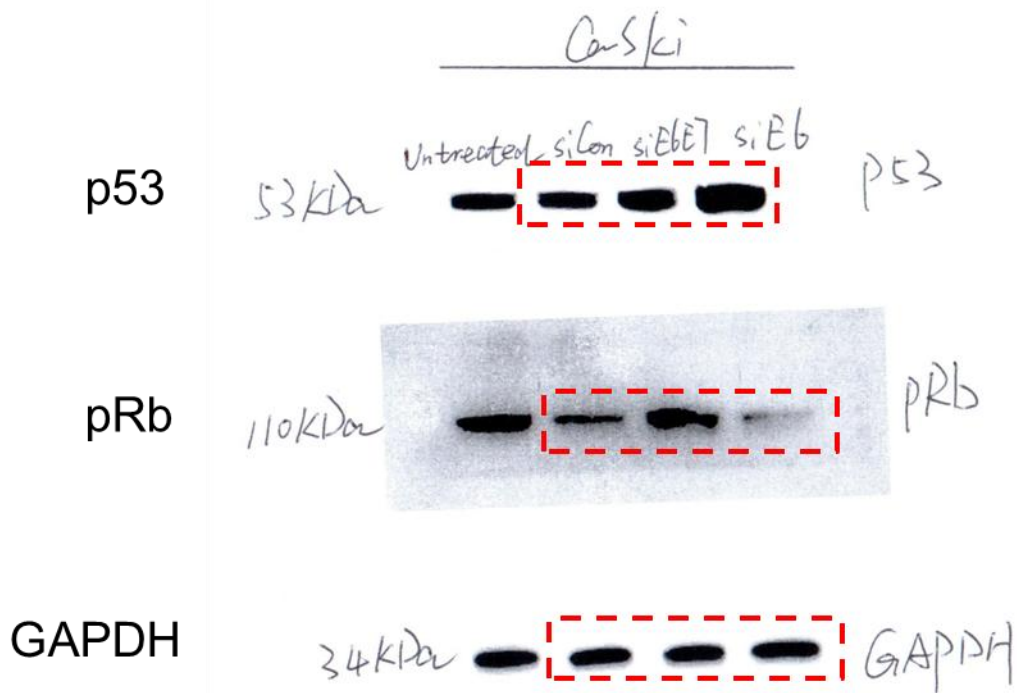
P31689 DNJA1	70.02	2.54	P31689
F5H2A4 F5H2A4	18.29	2.5	F5H2A4
P12270 TPR	155.25	2.49	P12270
Q16222-3 UAP1	147.35	2.46	Q16222-3
P00750-3 TPA	18.61	2.43	P00750-3
P13645 K1C10	304.83	2.36	P13645
P20618 PSB1	80.7	2.31	P20618
P00441 SODC	48.18	2.31	P00441
F5GZI1 F5GZI1	61.87	2.3	F5GZI1
Q9Y5Z4-2 HEBP2	26.19	2.3	Q9Y5Z4-2
Q13242 SRSF9	53.97	2.28	Q13242
P04264 K2C1	744.72	2.25	P04264
E9PP17 E9PP17	22.08	2.23	E9PP17
B4E2W0 B4E2W0	25.51	2.2	B4E2W0
Q86VZ5 SMS1	16.94	2.2	Q86VZ5
B2RCS5 B2RCS5	92.91	2.17	B2RCS5
P53675-2 CLH2	332.88	2.12	P53675-2
C9JP00 C9JP00	38.92	2.12	C9JP00
A8MVZ9 A8MVZ9	118.95	2.1	A8MVZ9
P14868 SYDC	266.02	2.02	P14868
B4DHY1 B4DHY1	127.31	2.02	B4DHY1
P38646 GRP75	98.01	2.02	P38646
Q9Y678 COPG	76.32	1.99	Q9Y678
Q06210-2 GFPT1	57.74	1.96	Q06210-2
B4E040 B4E040	34.66	1.96	B4E040
F5H740 F5H740	117.2	1.95	F5H740
A8MSH7 A8MSH7	70.67	1.94	A8MSH7
E7ERJ4 E7ERJ4	167.68	1.92	E7ERJ4
P57103-2 NAC3	34.79	1.92	P57103-2
D6RER5 D6RER5	64.6	1.91	D6RER5
B4DXJ9 B4DXJ9	187.91	1.9	B4DXJ9
C9JYJ0 C9JYJ0	42.55	1.9	C9JYJ0
D6R9W4 D6R9W4	172.8	1.88	D6R9W4
P40222 TXLNA	56.84	1.85	P40222
E9PMP7 E9PMP7	321.76	1.84	E9PMP7
Q99536 VAT1	92.22	1.83	Q99536
P43034 LIS1	66.88	1.83	P43034
E7EWH4 E7EWH4	86.3	1.82	E7EWH4
P62244 RS15A	78.1	1.82	P62244
Q12931 TRAP1	43.18	1.82	Q12931
B4DNU6 B4DNU6	35.34	1.82	B4DNU6
P49913 CAMP	13.95	1.82	P49913
Q01813 K6PP	438.92	1.81	Q01813
Q08499-6 PDE4D	27.07	1.81	Q08499-6

P62805 H4	304.52	1.8	P62805
B5ME19 B5ME19	182.11	1.8	B5ME19
O15144 ARPC2	94.01	1.8	O15144
O15042-3 SR140	81.86	1.8	O15042-3
E9PJF7 E9PJF7	92.89	1.79	E9PJF7
P17858 K6PL	136.69	1.78	P17858
P13726 TF	131.49	1.78	P13726
F2Z388 F2Z388	94.93	1.78	F2Z388
B4DEG8 B4DEG8	66.15	1.78	B4DEG8
F5H307 F5H307	25.56	1.78	F5H307
P61221 ABCE1	129.65	1.77	P61221
O14828-2 SCAM3	23.06	1.76	O14828-2
P07384 CAN1	83.18	1.75	P07384
D6QS48 D6QS48	79.45	1.75	D6QS48
Q96FQ6 S10AG	51.83	1.75	Q96FQ6

Supplementary Figure 1:

Presentation of original immunoblots. The cropped parts of immunoblots were indicated with boxes.

Figure 2a



Supplementary Figure 2:

Presentation of original immunoblots.

Figure 3a

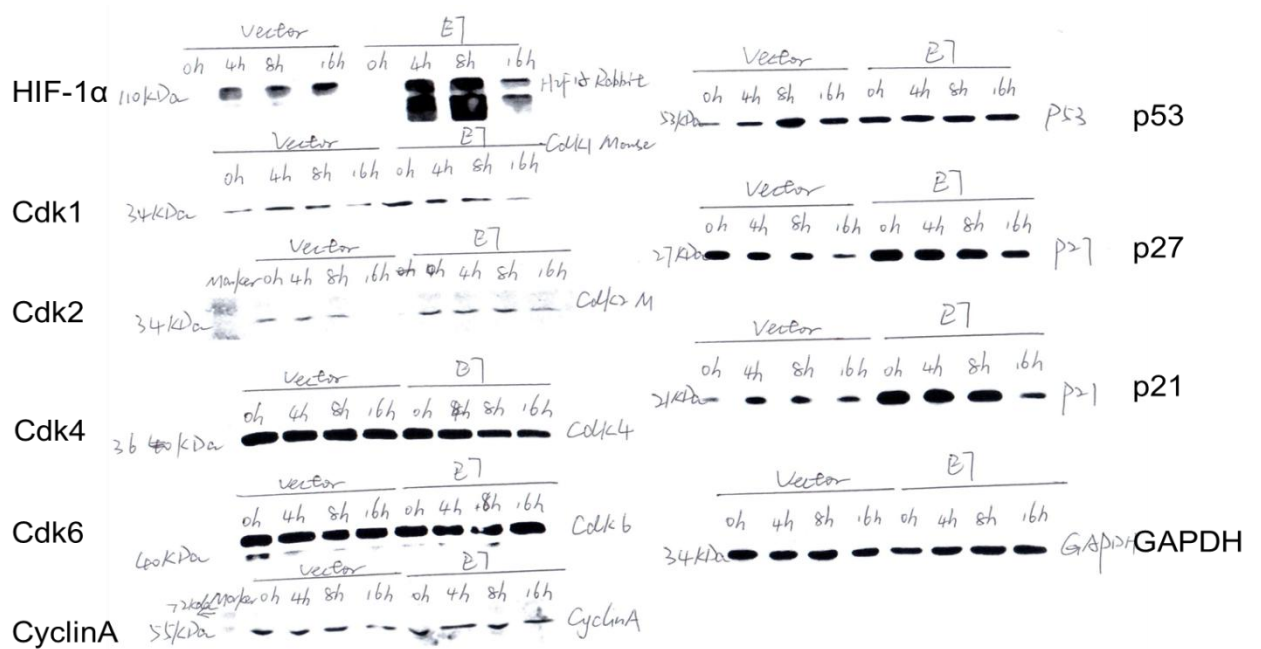
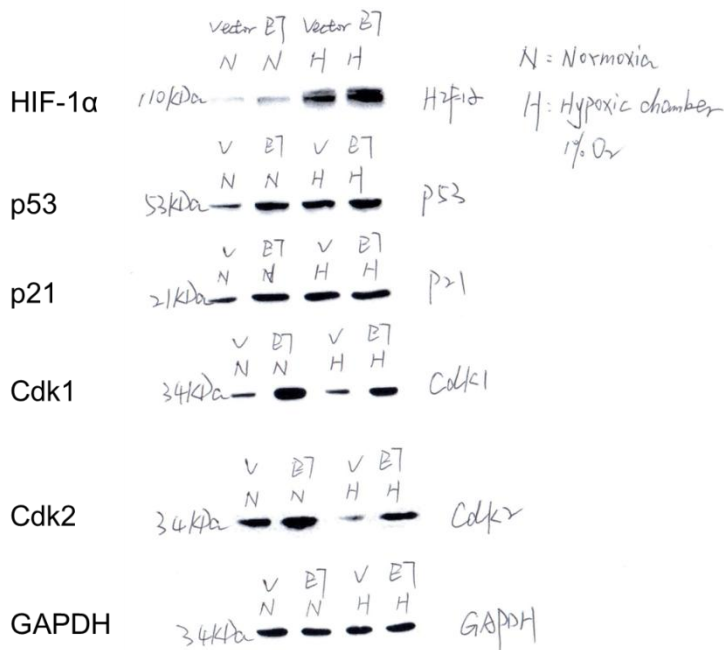


Figure 3b



Supplementary Figure 3:

Presentation of original immunoblots.

Figure 4c

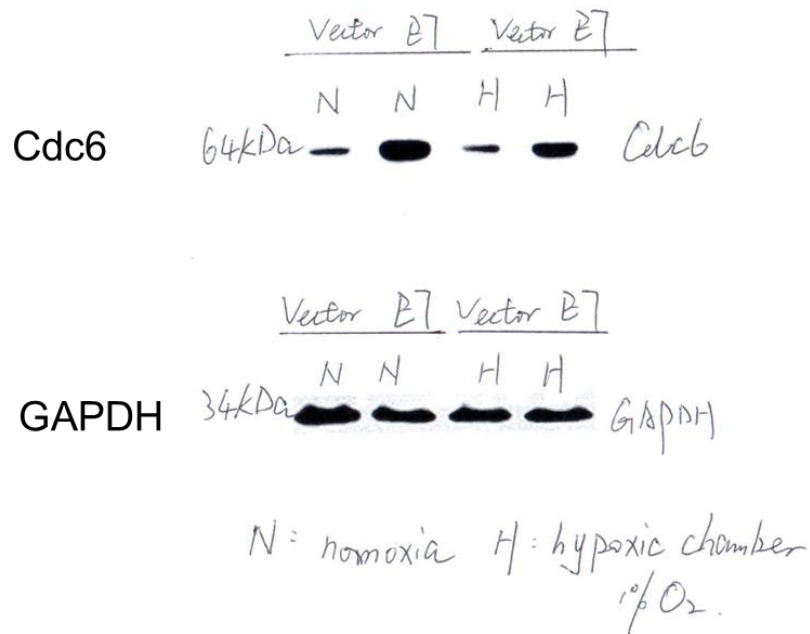


Figure 5a

