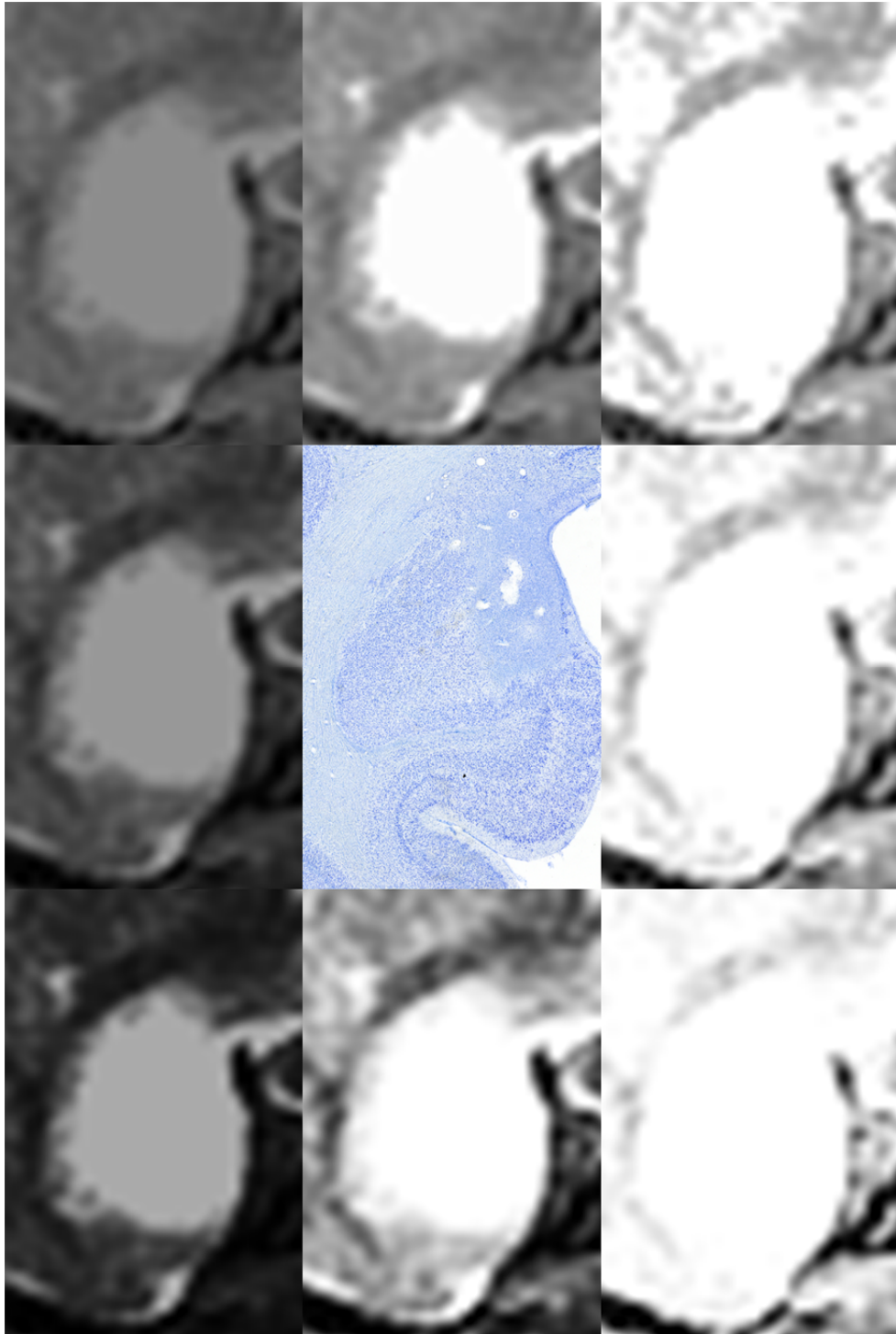


*Supplementary Material*

**MRI overestimates excitotoxic amygdala lesion damage in rhesus monkeys**

**Benjamin M. Basile\*, Chloe L. Karaskiewicz, Emily C. Fiuzat, Ludise Malkova, and Elisabeth A. Murray**

**\*Correspondence:** Benjamin M. Basile: [benjamin.basile@nih.gov](mailto:benjamin.basile@nih.gov)



**Supplementary Figure 1.** Manipulating brightness and contrast does not eliminate the discrepancy between MRI and histology. Center: Nissl-stained slide showing the amygdala as predominantly spared. Surround: T2 MRI at different brightness (x-axis) and contrast (y-axis) levels, all showing the amygdala as predominantly damaged.