

Supplementary Material

Structure of O-antigen and hybrid biosynthetic locus in *Burkholderia cenocepacia* clonal variants recovered from a cystic fibrosis patient

A. Amir Hassan^{1§}, Rita F. Maldonado^{1§}, Sandra C. dos Santos^{1§}, Flaviana Di Lorenzo^{2§}, Alba Silipo², Carla P. Coutinho¹, Vaughn S. Cooper⁴, Antonio Molinaro², Miguel Valvano³ and Isabel Sá-Correia^{1*}

* **Correspondence:** Professor Isabel Sá-Correia: isacorreia@tecnico.ulisboa.pt

§ These authors contributed equally to this work

Supplementary Figures:

Figure S1

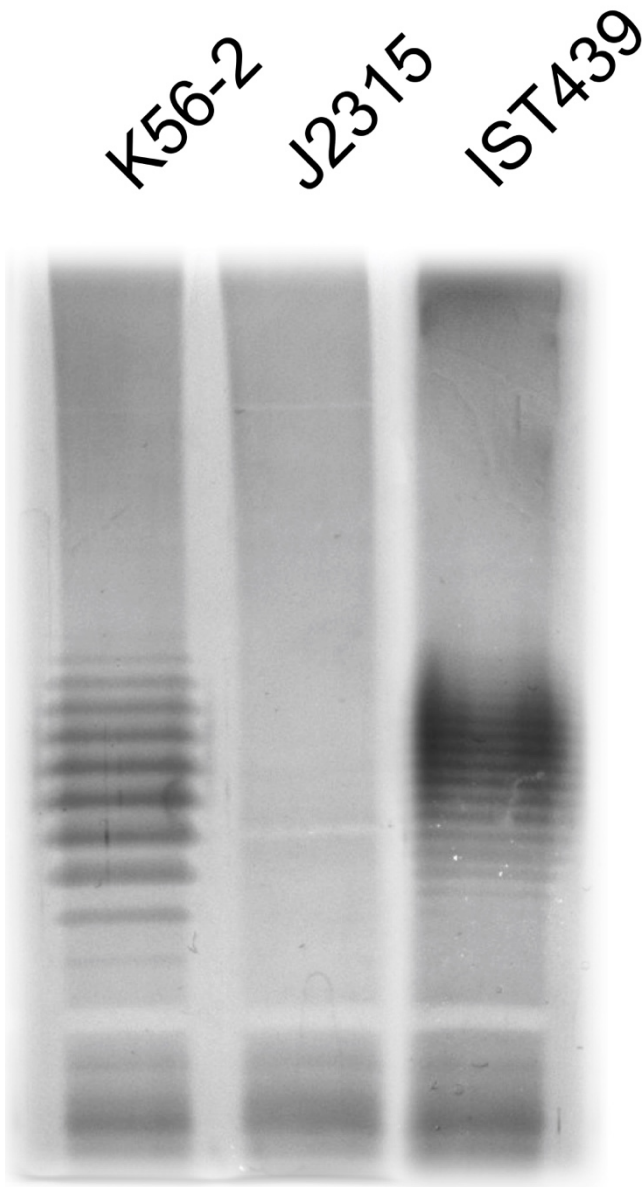


Figure S1: Electrophoretic profiles of the LPS extracted from *Burkholderia cenocepacia* IST439 isolate and the (*recA* lineage IIIA) ET-12 reference strains K56-2 and J2315. LPS loading was standardized based on culture optical density. Samples were run in 14% polyacrylamide gels in a Tricine-SDS system and developed by silver staining.