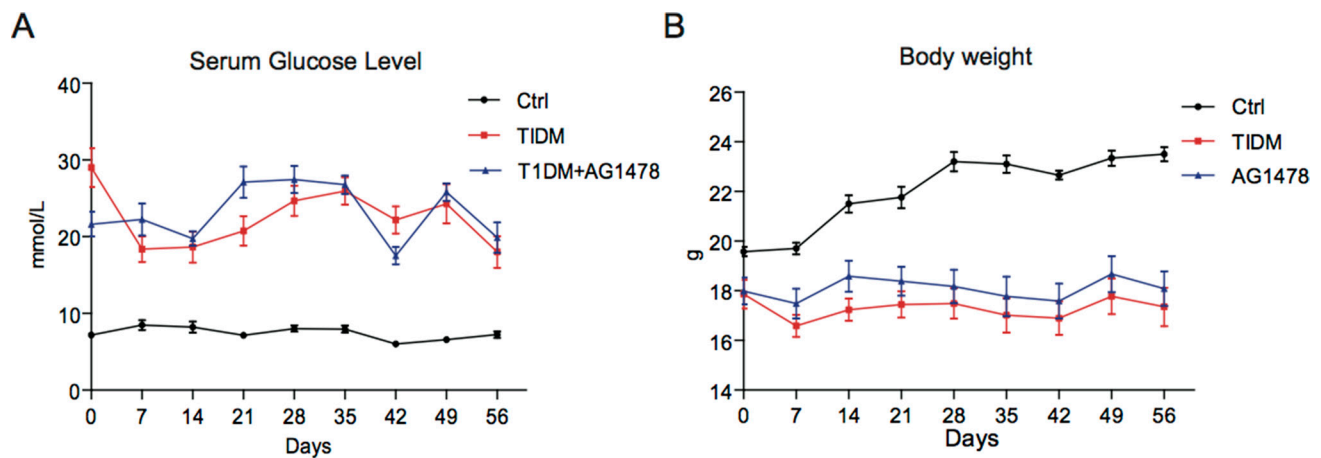


## EGFR inhibition attenuates diabetic nephropathy through decreasing ROS and endoplasmic reticulum stress

### Supplementary Materials



**Supplementary Figure 1: AG1478 administration did not affect blood glucose level and body weight.** STZ-induced diabetic mice showed elevated blood glucose level (**A**) and the relatively body weight (**B**) during the animal experiment interval. (Eight mice in each group were used for above analysis. Data were expressed as mean  $\pm$  SDs).