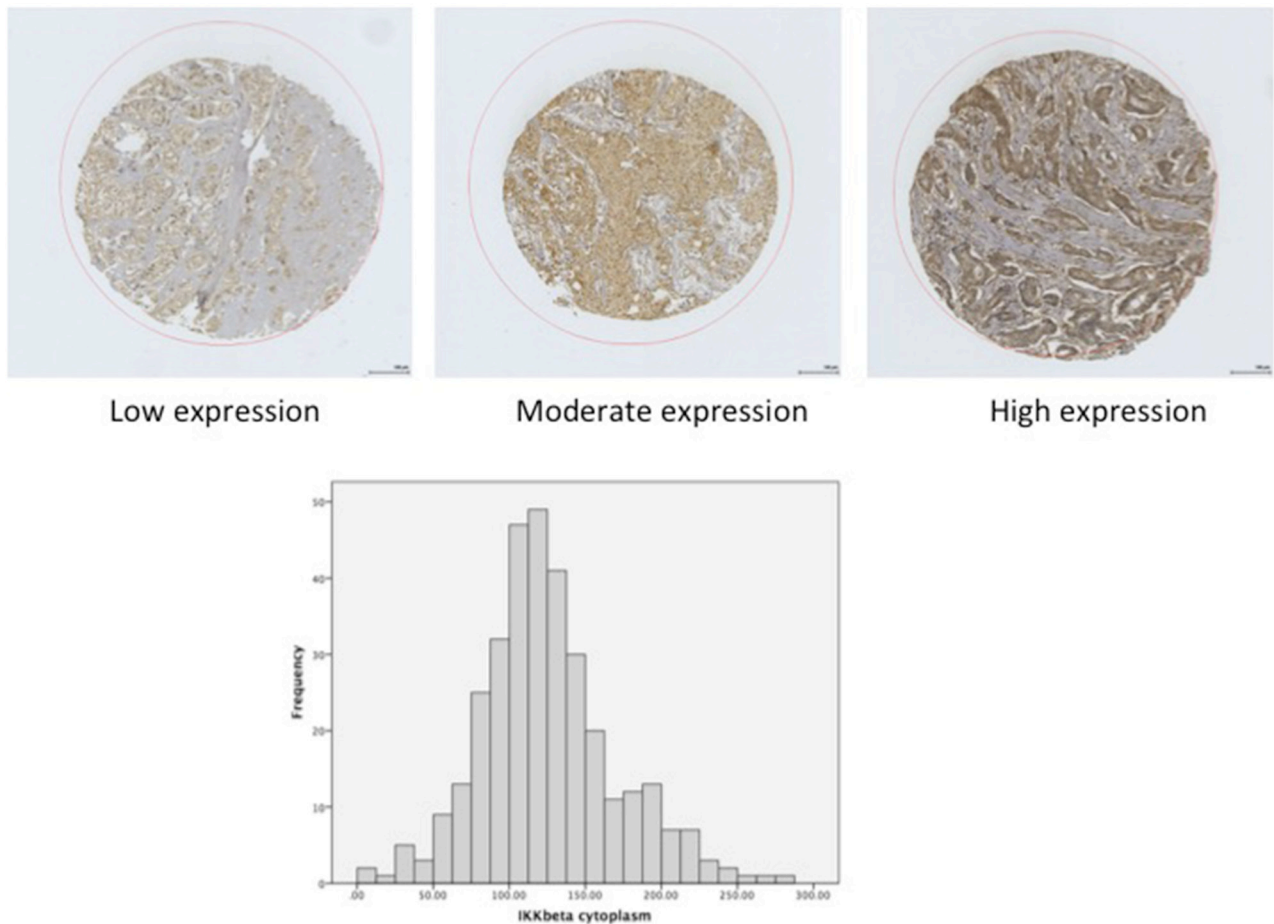
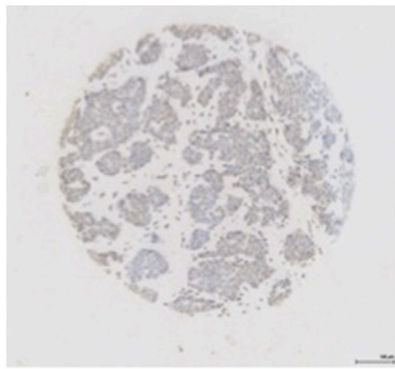


The relationship between members of the canonical NF- κ B pathway, components of tumour microenvironment and survival in patients with invasive ductal breast cancer

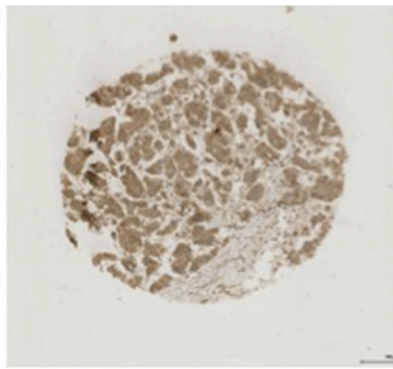
SUPPLEMENTARY FIGURES



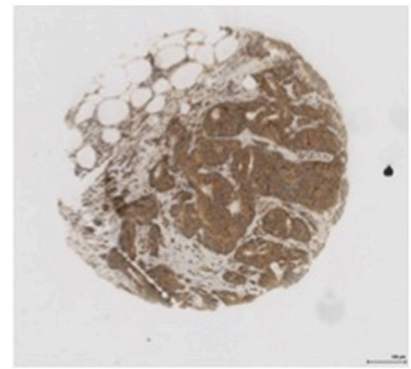
Supplementary Figure 1: Displays microphotographs illustrating low, moderate and high staining for IKK β , with a histogram of the distribution of cytoplasmic IKK β protein expression. Magnification x400.



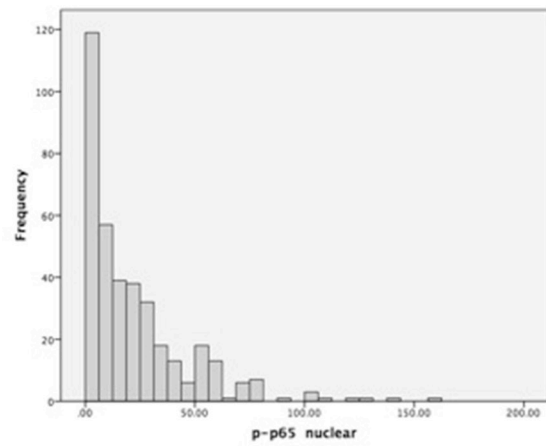
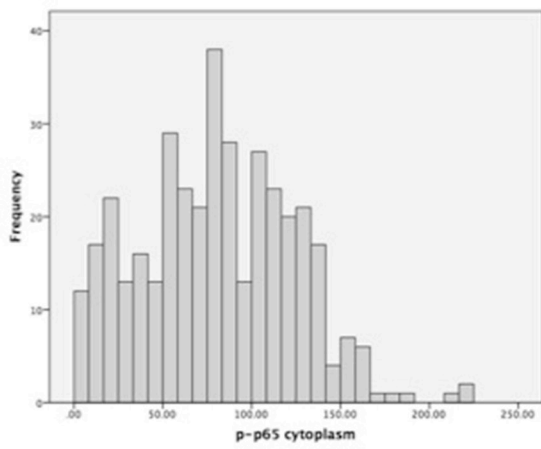
Low expression



Moderate expression



High expression



Supplementary Figure 2: Displays microphotographs illustrating low, moderate and high staining for p-p65, with histograms of the distribution of both cytoplasmic and nuclear p-p65 protein expression. Magnification x400.