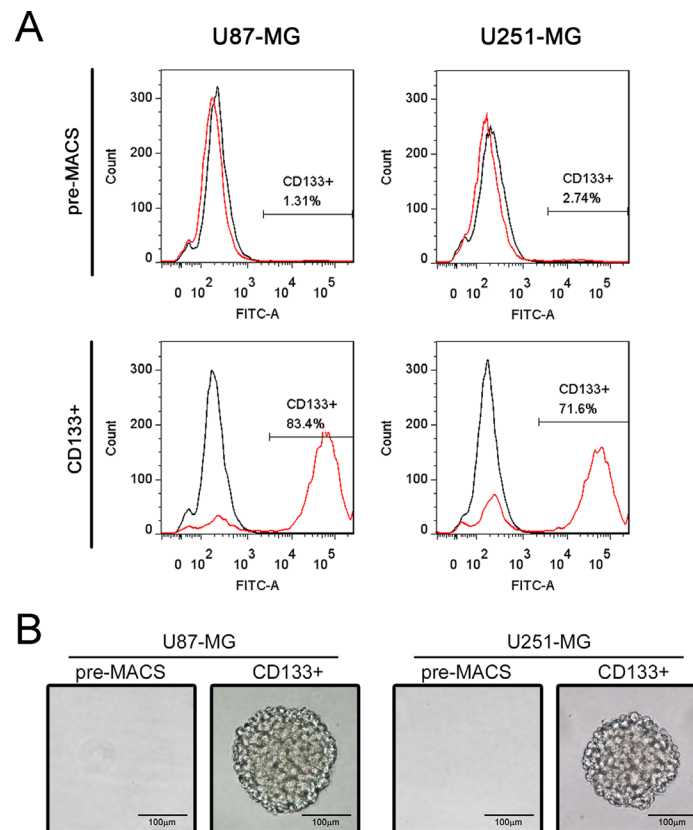


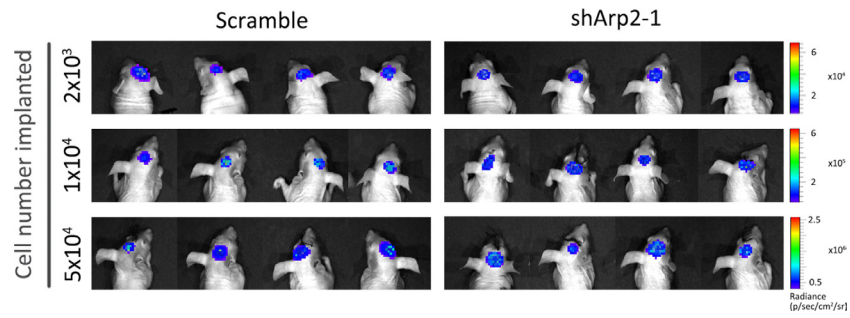
## Actin cytoskeleton regulator Arp2/3 complex is required for DLL1 activating Notch1 signaling to maintain the stem cell phenotype of glioma initiating cells

### SUPPLEMENTARY MATERIALS

### SUPPLEMENTARY FIGURES AND TABLE



**Supplementary Figure 1: MACS enriched CD133+ glioma neurospheres.** (A) The percentage of CD133+ GBM cells was tested through flow cytometry. Black: negative control. Red: treated cells. (B) Pre-MACS and CD133+ cells were cultured in stem cell medium. Images displayed the CD133+ cells formed neurosphere at day 10.



**Supplementary Figure 2: ShArp2 and scramble CD133+ U87-MG neurosphere cells were implanted into the brain of nude mice. Images were captured at 2 days after implantation.**

Supplementary Table 1: Information of primary antibodies used in this study

Target	Manufacturer	Source	Species reactivity	Dilution for IF	Dilution for Western blot
CD133	Abcam #ab19898	Rabbit	Human	1/100	1/500
Nestin	Abcam #ab22035	Mouse	Human		1/1000
Notch1	Abcam #ab52627	Rabbit	Human	1/100	1/1000
NICD1	Cell Signaling #4147	Rabbit	Human	1/100	1/1000
HES1	Abcam #ab108937	Rabbit	Human		1/10000
DLL1	Abcam #ab57308	Mouse	Human	1/100	1/500
GFAP	Abcam #ab33922	Rabbit	Human	1/100	1/1000
TUJ1	Abcam #ab14545	Mouse	Human	1/100	1/2000
Sodium Potassium ATPase	Abcam #ab76020	Rabbit	Human		1/100000
$\alpha$ -tubulin	Abcam #ab7291	Mouse	Human		1/10000
$\beta$ -actin	ZSGB-Bio #TA- 09	Mouse	Human		1/5000

IF: Immunofluorescent staining.