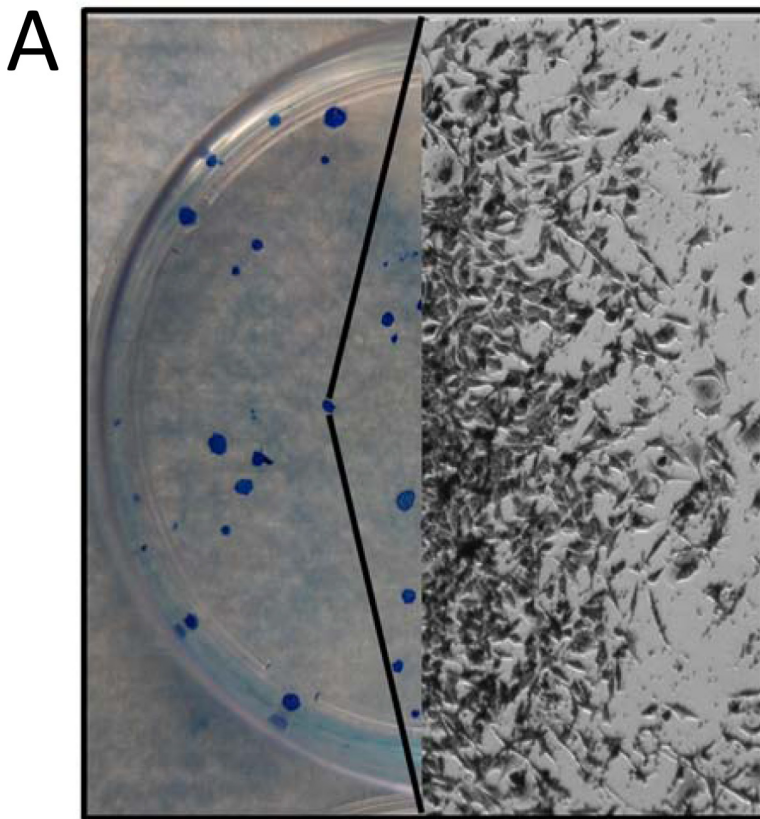


## Effect of *Salmonella enterica* serovar Typhimurium VNP20009 and VNP20009 with restored chemotaxis on 4T1 mouse mammary carcinoma progression

### Supplementary Materials



**Supplementary Figure 1: Metastatic 4T1 cells can be isolated from organs of interest and grown in supplemented media to yield quantitative evaluations of metastatic tumor burden.** Following necropsy, the small lung lobes were enzymatically digested, filtered, and grown on cell culture plates in media supplemented with 6-thioguanine. 4T1 cells are inherently resistant to 6-thioguanine and, thus, individual metastatic cells are able to grow into tumor cell colonies and manually counted.