

Supplementary Figure 1:

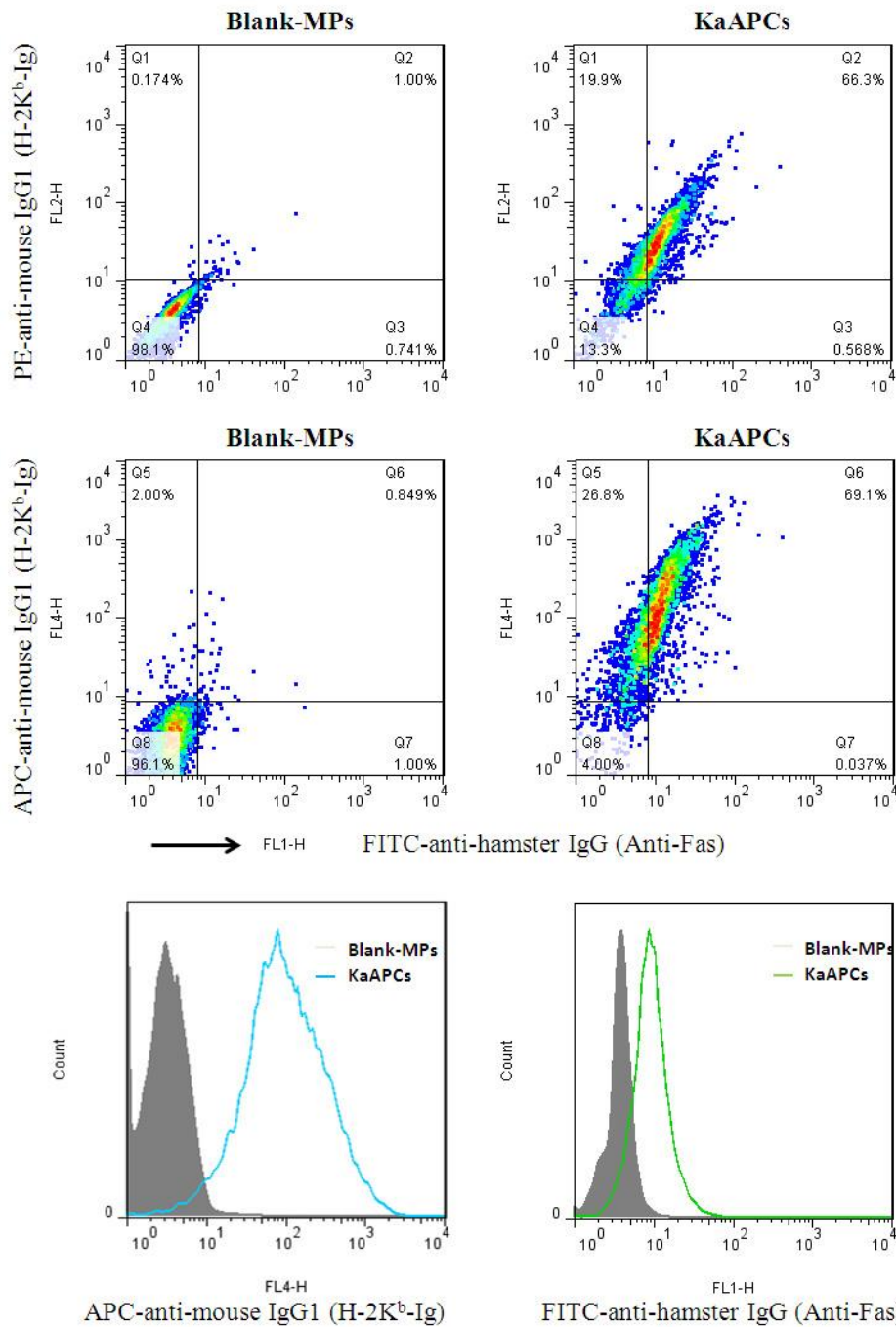


Fig. S1 Phenotypic analyses of KaAPCs. KaAPCs and Blank-MPs (PLGA-MPs blocked with BSA) were stained by PE- or APC-anti-mouse IgG1 (binds to the Ig fragment of H-2K^b-Ig dimer) and FITC-anti-hamster IgG (binds to anti-Fas) mAbs and followed by flow cytometry. The representative dot plots or diagrams were presented.