

Supplementary Figure 12:

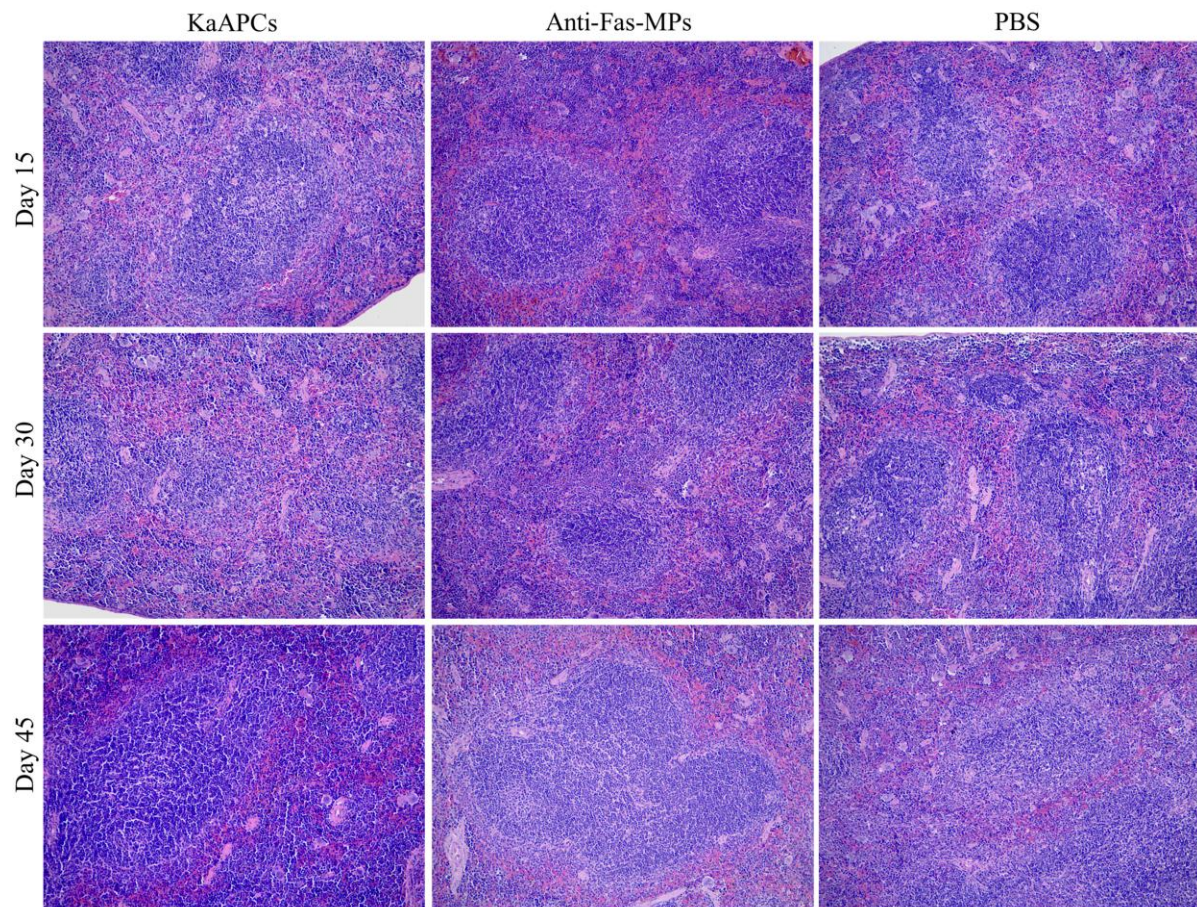


Fig. S12 KaAPCs do not cause visible pathological injuries in spleen. After treatment with KaAPCs, anti-Fas-MPs or PBS as described, the pathological injuries were analyzed by H&E staining for various organs on days 15, 30, and 45 after transplantation (2 days, 17 days, and 32 days after the final treatment). Representative staining results of spleen sections from each treatment group at each time point were presented. $n = 3$ mice for each group at each time point.