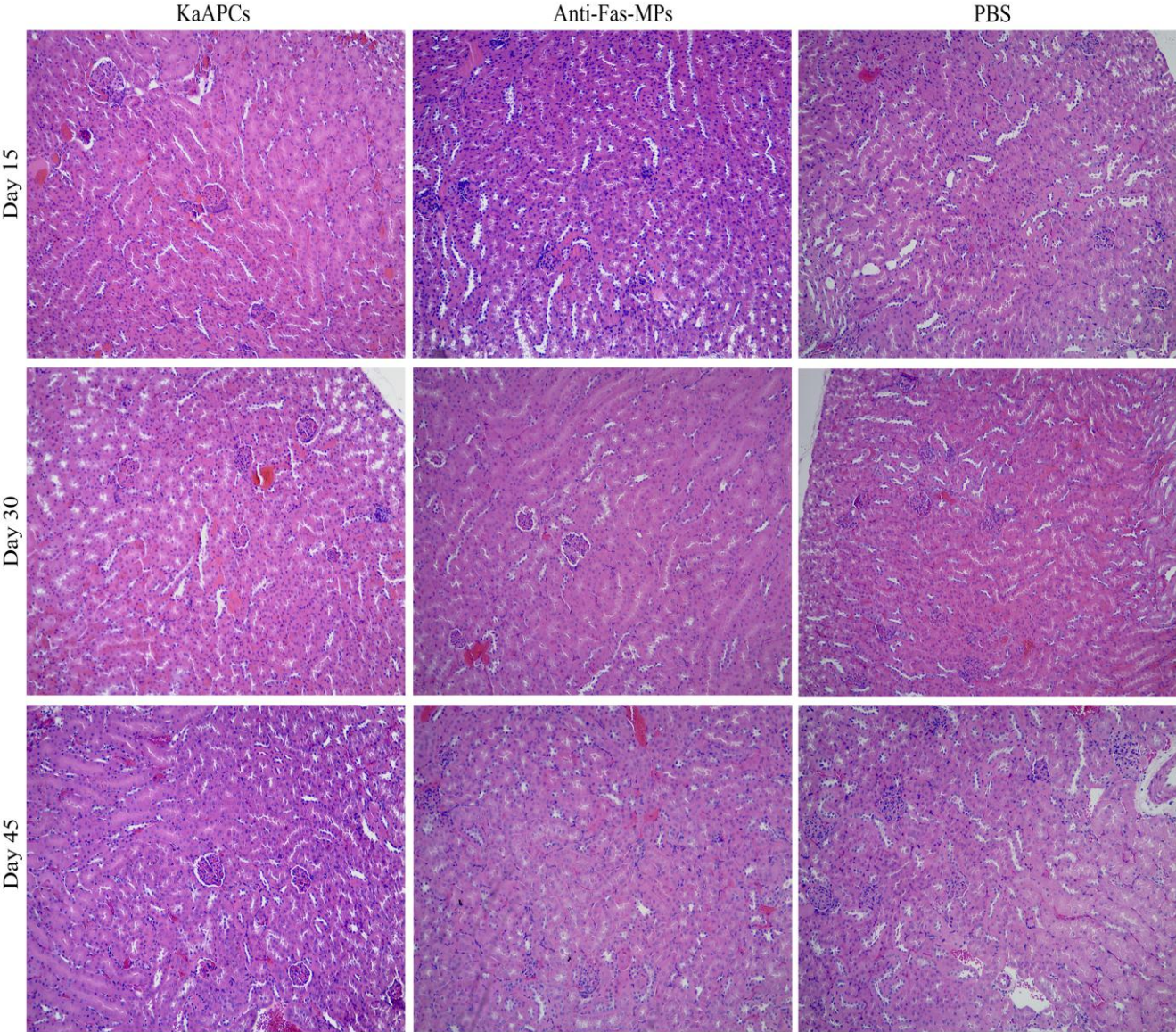


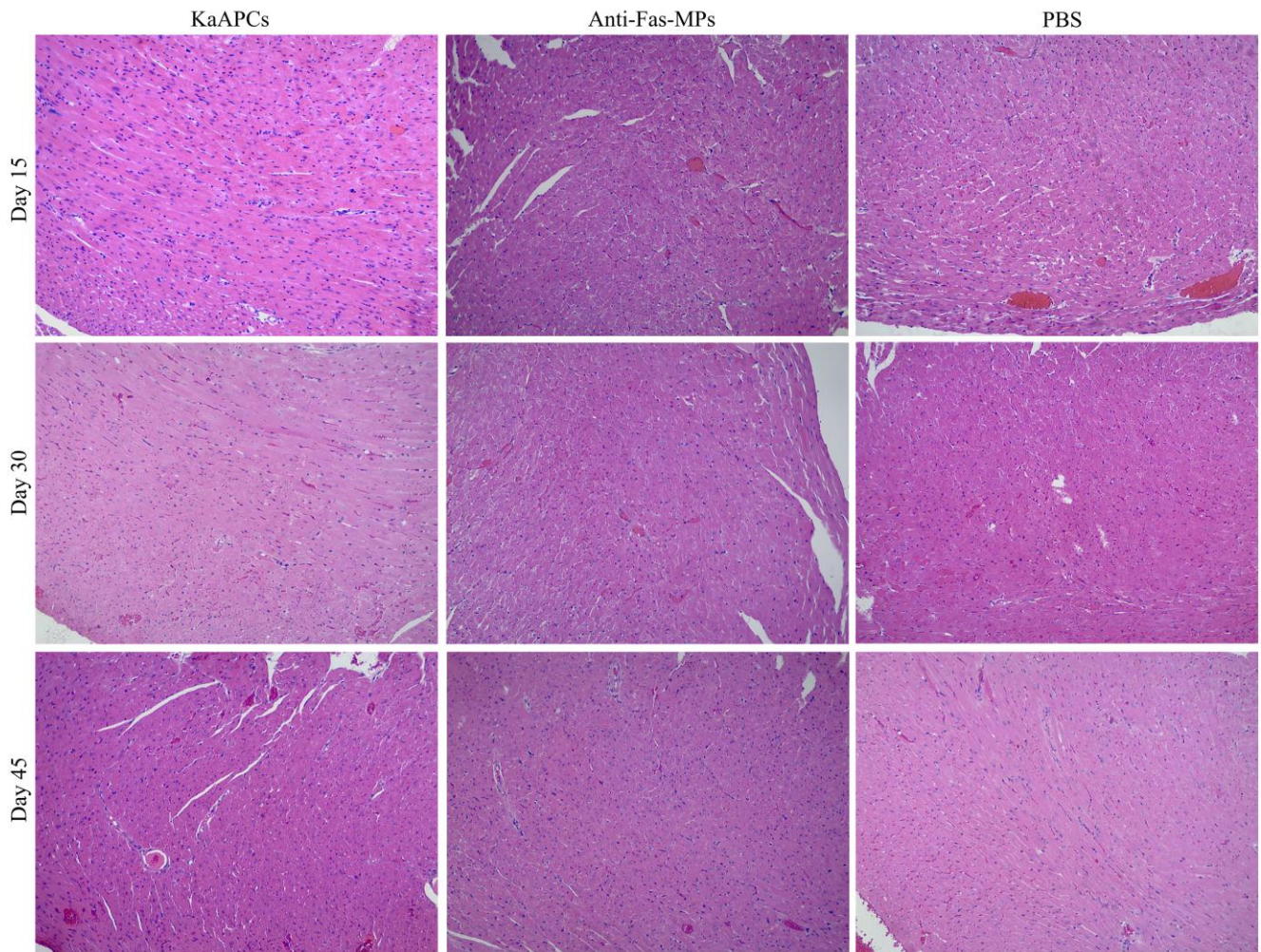
Supplementary Figure 13:

A **Kidney sections**



B

Heart sections



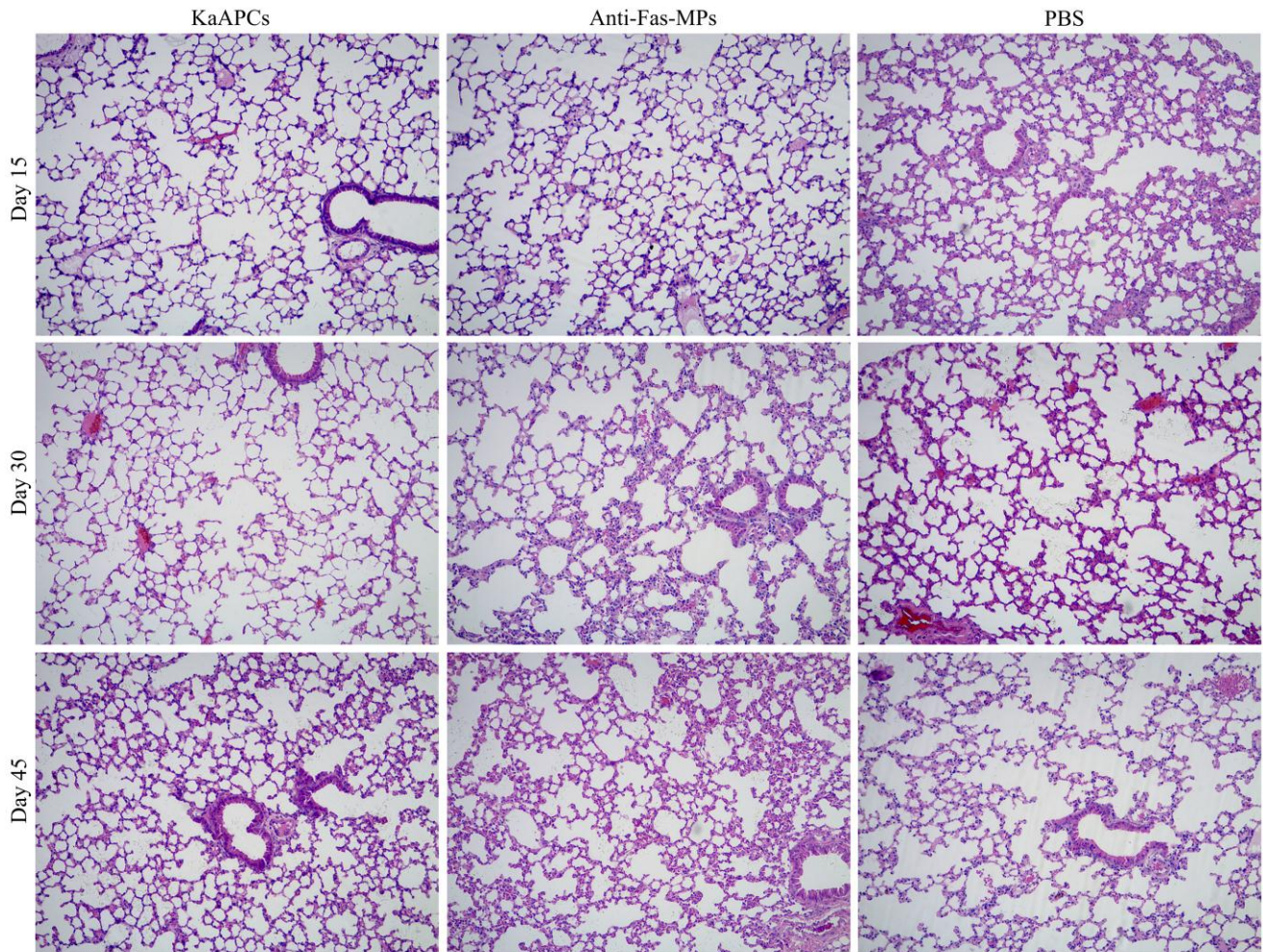
C**Lung sections**

Fig. S13 KaAPCs do not cause visible pathological injuries in kidney, heart, and lung. After treatment with KaAPCs, anti-Fas-MPs or PBS as described, the pathological injuries were analyzed for various organs on days 15, 30, and 45 after transplantation by H&E staining. Representative staining results of kidney sections (A), heart sections (B), and lung sections (C) from each treatment group at each time point were presented. $n = 3$ mice for each group at each time point.