

Supplementary Figure 3:

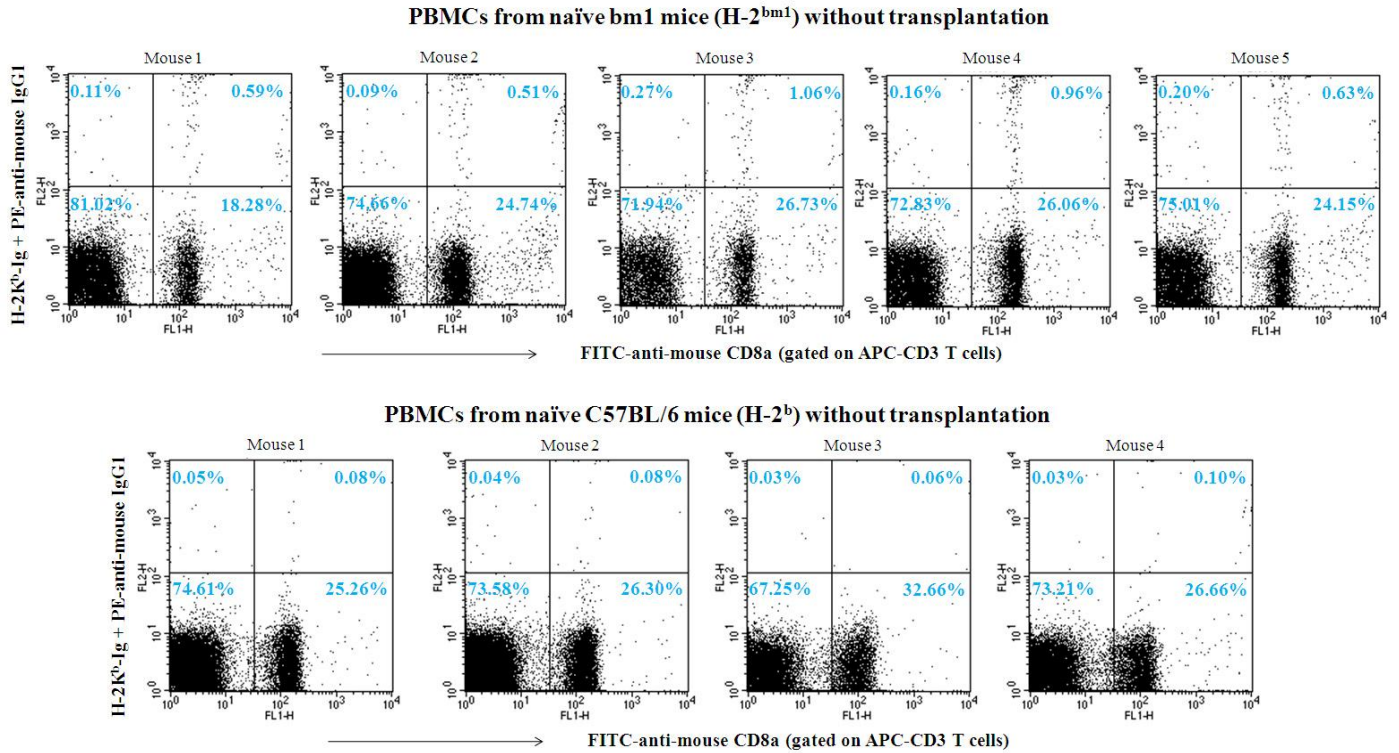


Fig. S3 Percentage of H-2K^b-alloreactive CD8⁺ T cells and CD4⁺ T cells in the PBMCs of naïve bm1 mice without transplantation. Before transplantation, the PBMCs of naïve bm1 mice were harvested and stained with H-2K^b-Ig dimer (peptide unloaded), APC-anti-mouse CD3 and FITC-anti-mouse CD8a to detect the frequency of H-2K^b-alloreactive T cells, and followed by flow cytometric analysis of Dimer⁺/CD8⁺/CD3⁺ cells and Dimer⁺/CD8⁻/CD3⁺ cells. As shown in the dot plots, H-2K^b-Ig dimer mainly stained with CD8⁺ T cells with a percentage of $0.75 \pm 0.24\%$ in CD3⁺ T cell population or $3.01 \pm 0.73\%$ in CD8⁺ T cell population, and very weak staining with CD4⁺ T cells (CD8⁻/CD3⁺) was found ($0.16 \pm 0.07\%$ in CD3⁺ T cell population). As a negative control of H-2K^b-Ig dimer staining, PBMCs from naïve C57BL/6 mice (H-2^b) were also stained by H-2K^b-Ig dimer, but only background staining was found with CD8⁺ T cells.