

Supplementary Figure 6:

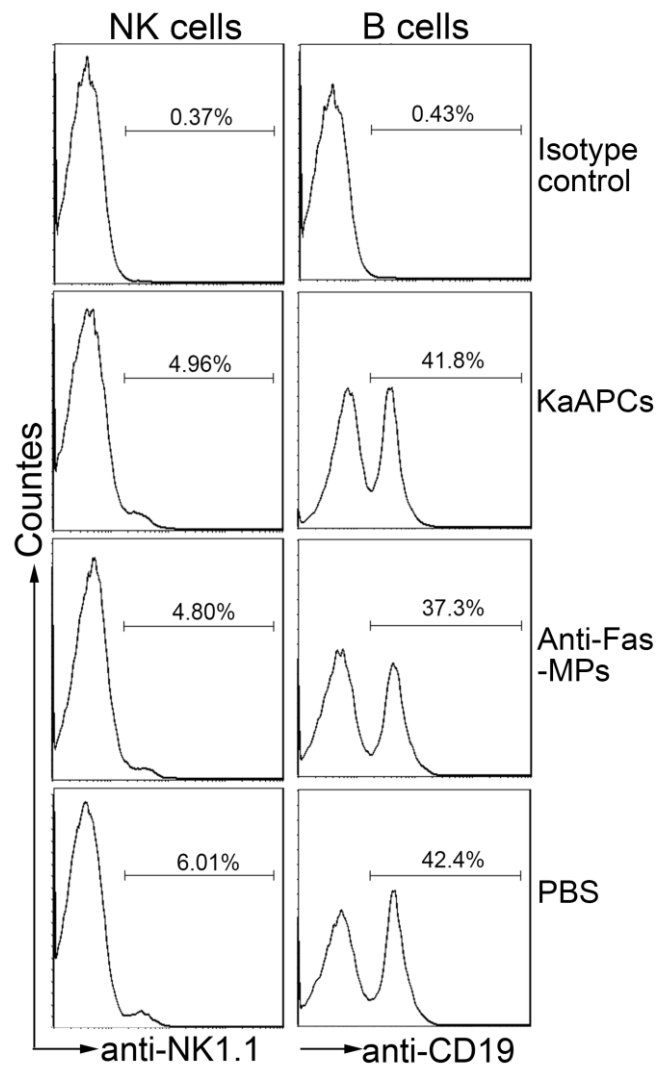


Fig. S6 Representative diagrams of B cells and NK cells detection. After treatment with KaAPCs, anti-Fas-MPs or PBS on days 9, 11 and 13 after transplantation, splenocytes were prepared from recipient mice on day 15, stained with FITC-anti-mouse CD19 (MB19-1), FITC-anti-mouse NK1.1 (PK136) or isotype control mAbs, and followed by flow cytometry. The frequencies of NK cells and B cells in the gated splenocyte populations were displayed.