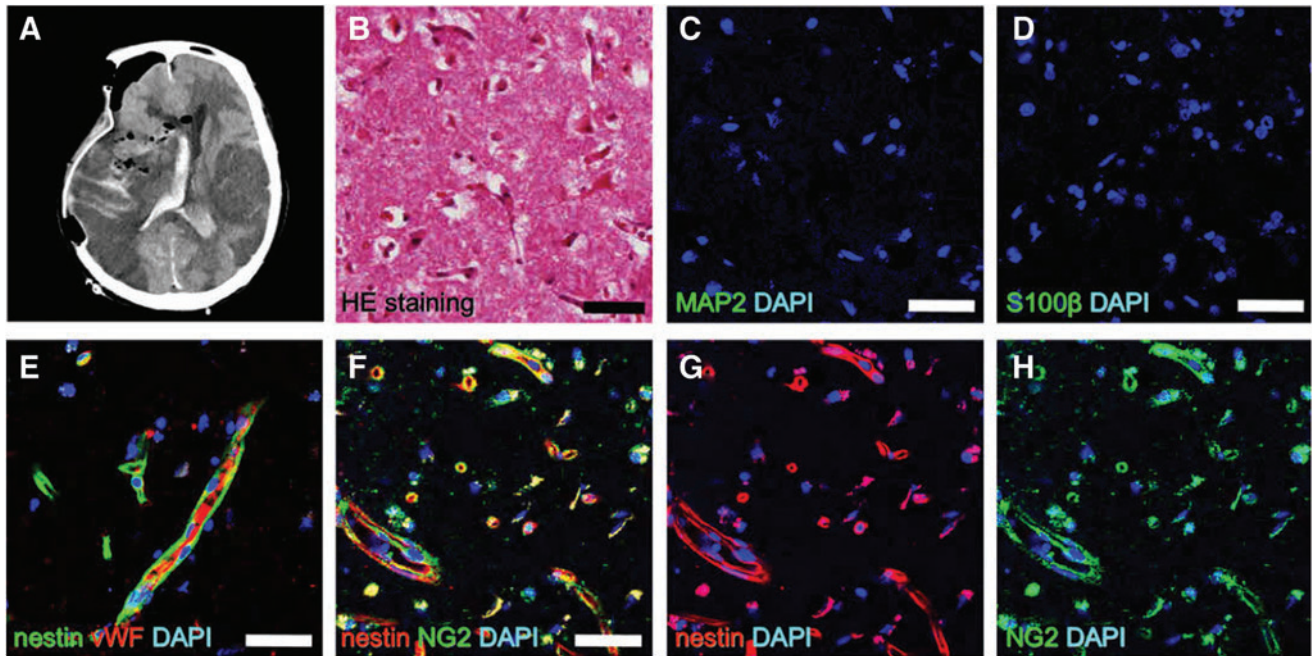


Supplementary Data



SUPPLEMENTARY FIG. S1. CT image and histological findings of poststroke human brain tissue sections obtained from the second patient. Postoperative CT following decompressive craniectomy and partial lobectomy (A). H&E staining of surgically excised tissue (B). MAP2⁺ neurons [MAP2 (C: green) and DAPI (C: blue)] and S100β⁺ astrocytes [S100β (D: green) and DAPI (D: blue)] were rarely observed. However, immunohistochemical analysis confirmed that nestin⁺ cells were localized near vWF⁺ ECs within these regions [nestin (E: green), vWF (E: red), and DAPI (E: blue)]. Nestin⁺ cells expressed NG2 [nestin (F, G: red), NG2 (F, H: green), and DAPI (F-H: blue)]. Scale bars = 50 μm (B-F). CT, computed tomography; H&E, hematoxylin and eosin.