

# S1 Fig

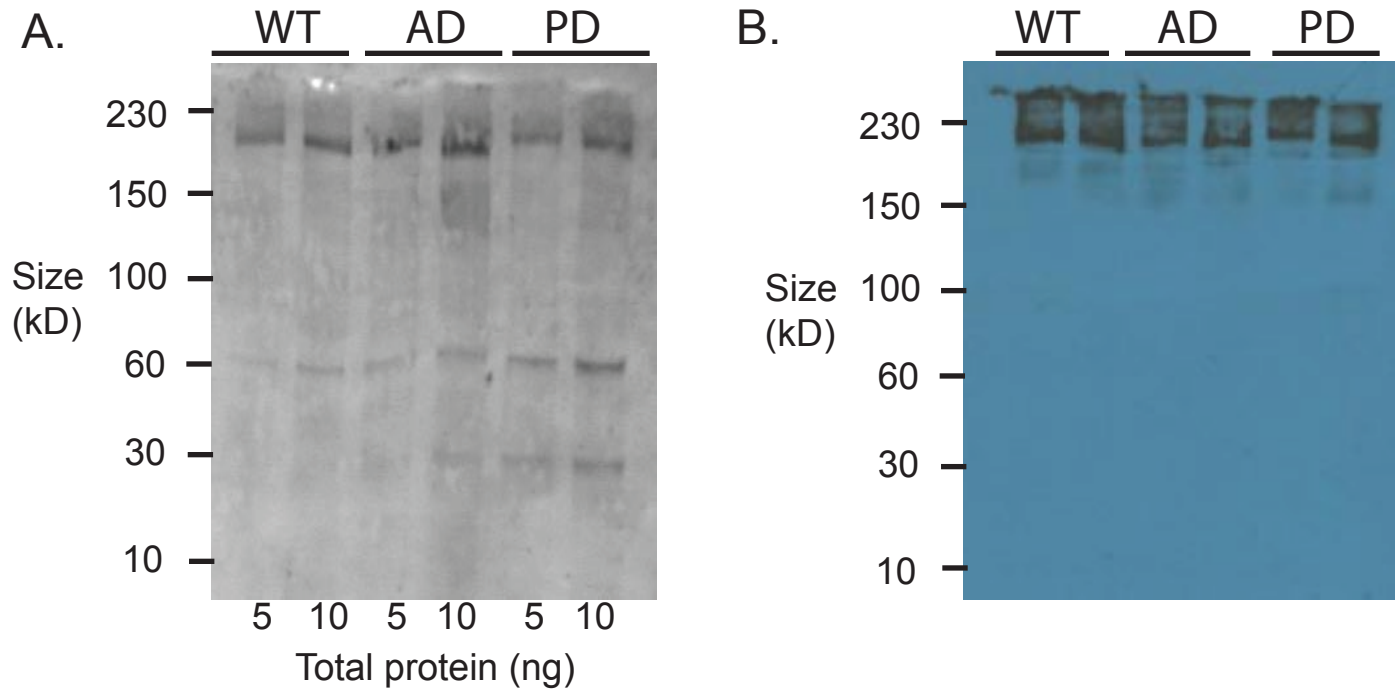


Figure S1. Purification of FLAG-tagged *Drosophila* Pol  $\theta$ . (A) FLAG-tagged wild-type (WT), ATPase-dead (AD), and polymerase-dead (PD) Pol  $\theta$  was affinity purified using FLAG resin and the eluate was spun through a 40K desalting column. Shown is a nitrocellulose membrane stained with Fastblot following SDS-PAGE and transfer. (B) Western blot of the membrane probed with anti-FLAG antibody.