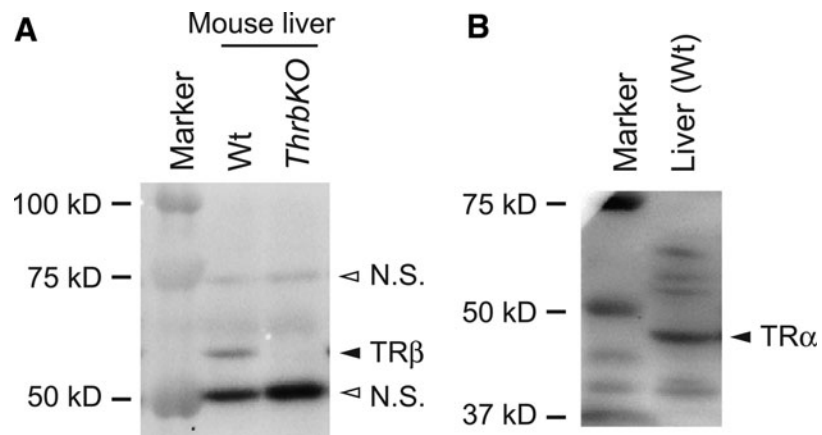


## Supplementary Data



**SUPPLEMENTARY FIG. S1.** Western blot analyses of TR isoforms. (A) TR $\beta$  expression in liver lysates prepared from wild-type (Wt) and *Thrb*-knockout (*ThrbKO*) mice (negative control). Blots were probed with an antibody against a C-terminal TR $\beta$  peptide (sc-738; Santa Cruz Biotechnology). (B) TR $\alpha$  expression in lysates prepared from Wt mouse liver. Blots were probed with an antibody against a TR $\alpha$  peptide (PA1-211A; Thermo Scientific).