

Figure S1. HAI scores of colonic pathology at 10 WPI (A) and 20 WPI (B). Proximal/transverse colon and distal colon collected from mice dosed with Hh, or the CDT mutant or vehicle alone were graded for inflammation, edema, epithelial defects, crypt atrophy, hyperplasia, and dysplasia. The HAI scores were generated by combining scores for all criteria. There was no significant differences of the HAI scores between Hh-infected and the HhCDT mutant-infected mice at both time-points, whereas all the infected mice developed more severe colonic pathology compared with the controls. * represents P values when compared with the uninfected controls: * < 0.05.

190x123mm (300 x 300 DPI)

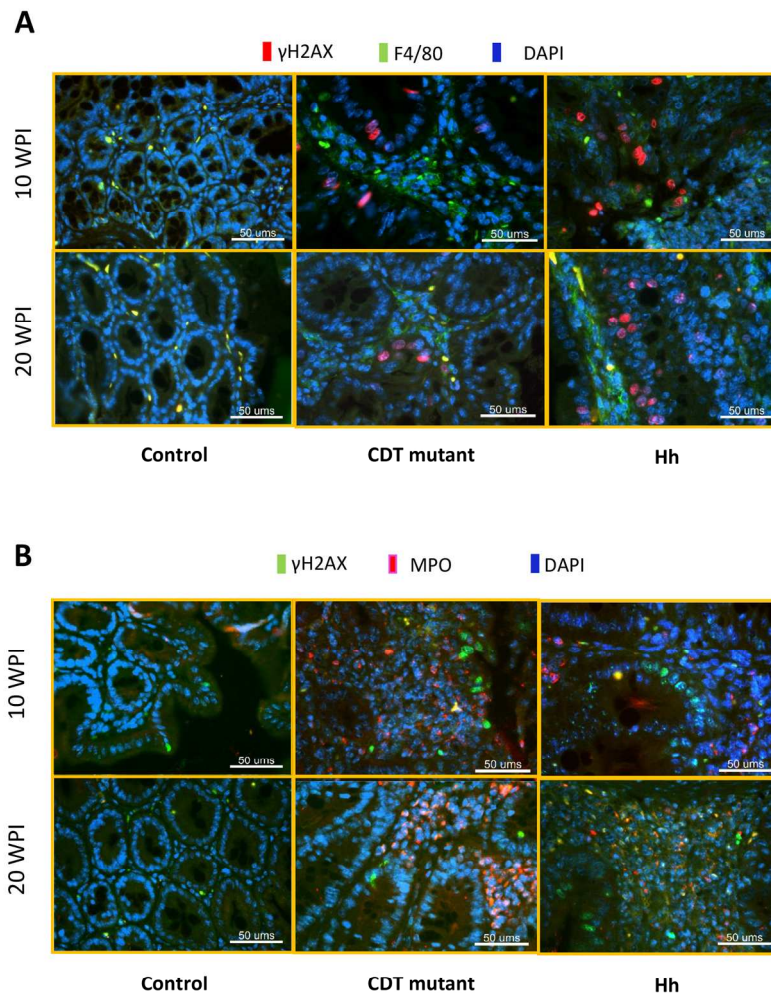


Figure S2. γ H2AX foci⁺ epithelial cells adjacent to the inflamed tissue infiltrated by inflammatory cells such as macrophages (A) and neutrophils (B). (A) the cecal tissues were co-stained with rabbit anti- γ H2AX antibody (red) and rat anti F4/80 antibody (green) and (B) with mouse anti- γ H2AX antibody (green) and rabbit anti-MPO antibody.

168x216mm (300 x 300 DPI)