

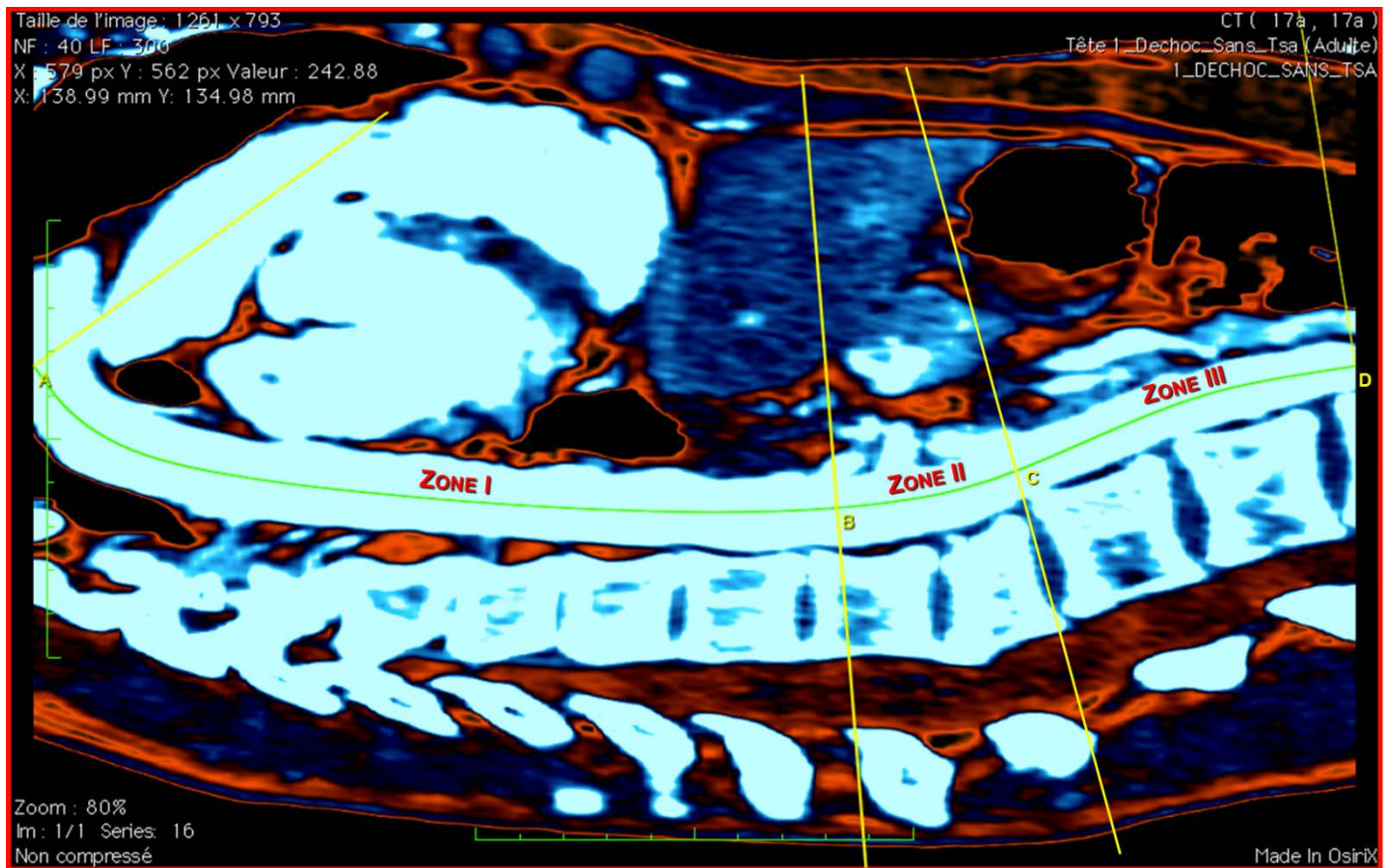
Supplementary Online Content

Pezy P, Flaris AN, Prat NJ, et al. Fixed-distance model for balloon placement during fluoroscopy-free resuscitative endovascular balloon occlusion of the aorta in a civilian population. *JAMA Surg*. Published online December 14, 2016.
doi:10.1001/jamasurg.2016.4757

eFigure. Route of the central axis of the aorta, plotted with OsiriX

This supplementary material has been provided by the authors to give readers additional information about their work.

eFigure. Route of the central axis of the aorta, plotted with OsiriX.



The yellow lines intersect the central axis at the origin of the main branches of the aorta used to limit each zone. A: origin of the left subclavian artery ; B: origin of the celiac trunk ; C: origin of the lower renal artery ; D: aortic bifurcation.